

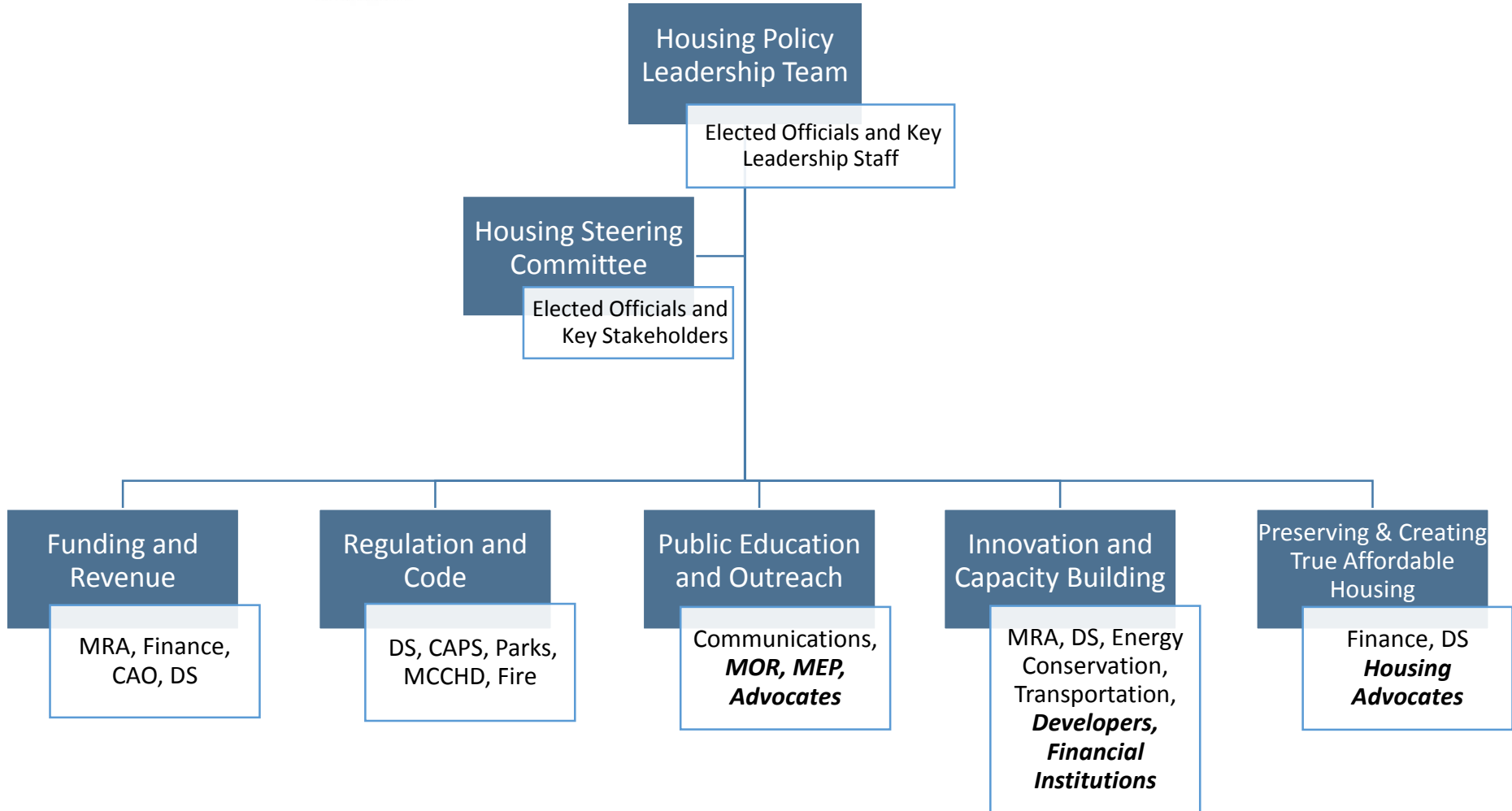


HOUSING AND COMMUNITY DEVELOPMENT

400 RYMAN MISSOULA, MONTANA 59802-4297

Housing Policy for Missoula

Presentation to COW
December 2018





Housing Policy Vision

Homes build strong communities.

- Safe and healthy homes are the foundation of childhood **educational** success.
- A diversity of home types and affordability levels allow for a robust and thriving **local economy**.
- Safe and healthy homes support individual and community **health**.
- Access to homes we can afford enables Missoulians to **improve our circumstances and thrive** in our community.



Public Education & Outreach

Group Members: Ginny Merriam, City of Missoula
Anne Hughes, Missoula County
Mike Nugent, MOR
Lindsey Wallace, MEP

Key Resources

To-Date: Casey Dunning, MIC
Penny Cope, MBOH
Spider McKnight, Six Pony Hitch
Jessica Burson, Homeward



Public Education & Outreach

Pre-Policy Release Outreach Plan

Focus: gathering targeted and specific feedback from individuals and organizations working in fields impacted by housing policy changes; specific demographic groups who have unique needs.

- Stakeholder meetings
- Focus groups with the consultant
- Neighborhood Leadership Teams
- Practitioner-focused listening sessions

Post-Policy Release Outreach Plan

Focus: reaching out to the community to gather their reactions, feedback, thoughts and concerns.

- Community Open Houses
- Neighborhood canvassing



Public Education & Outreach

Complete:

- **16** stakeholder meetings with individuals in the private and non-profit sectors, faith community, financial institutions, and advocacy groups
- **2** focus groups with nearly 20 participants
- **4** Neighborhood Leadership Team meetings
- **56** community members consulted and updated

Pending:

- Additional stakeholder meetings
- **2** more consultant focus groups
- **14** more Neighborhood Leadership Team meetings
- **4** practitioner-focused listening sessions



Regulation and Code

Group Members:

John Wilson, Public Works

Denise Alexander, Don Verrue, & Ben Brewer,
Development Services

Kevin Slovarp, Engineering

Elizabeth Erickson, Parks and Recreation

Andrew Hagemeyer & Jennie
Dixon, Missoula County CAPS

Key Resources To-Date:

Industry interviews and focus groups



Regulation and Code

Complete:

- 10 technical work group meetings
- 6 interviews with industry stakeholders
- 2 focus groups
- ADU policy recommendations in final draft form

Pending:

- Additional focus groups
- Additional stakeholder interviews
- Affordable housing incentives recommendations in final draft form



HOUSING AND COMMUNITY DEVELOPMENT

400 RYMAN MISSOULA, MONTANA 59802-4297

Preserving & Creating True Affordable Housing

Group Members:

Lori Davidson, MHA

Hermina Harold, Trust Montana & NMCDC

Kaia Peterson, NeighborworksMT

Jim Morton, HRDC

Heather McMilin, Homeward

Noreen Humes, Habitat for Humanity

Melissa Gordon, Missoula County CAPS

Key Resources To-Date:

Dale Bickell, CAO, City of Missoula

Theresa Williams, Reaching Home Coordinator

Industry interviews



Preserving & Creating True Affordable Housing

Complete:

- 8 technical work group meetings
- 4 interviews with industry stakeholders
- Definitions of affordable housing

Pending:

- LIHTC developer focus group
- Targeted population/service provider focus group
- LIHTC support program recommendations in final draft form
- Affordable housing preservation program in final draft form



HOUSING AND COMMUNITY DEVELOPMENT

400 RYMAN MISSOULA, MONTANA 59802-4297

Innovation & Capacity Building

Group Members:

Ellen Buchanan, MRA
Andrea Davis, Homeward
Chase Jones, Energy Conservation
Laval Means, Development Services
John Giuliani, Private Developer
Aaron Wilson, Development Services, Transportation
Barb Callaghan, First Security Bank
Nate Richmond, Private Developer

Key Resources To-Date:

Dave Glaser, Mofi
Corey Aldridge, Mountain Line



Innovation & Capacity Building

Complete:

- 6 technical working group meetings
- 4 interviews with industry stakeholders
- Recommendations to grow local construction capacity in draft form

Pending:

- New non-profit development model recommendations in final draft form
 - Expanded consumer program recommendations in final draft form
 - Implementation and oversight recommendations in final draft form
 - Housing impact assessment framework in final draft form
-



Funding and Revenue

Group Members:

Dale Bickell, Mayor's Office

Leigh Griffing, Finance

Chris Behan, MRA

Mike Haynes, Development Services

Key Resources

To- Date:

Dave Glaser, Mofi

Jack Lawson, MFCD

Jim Nugent, City Attorney



Funding and Revenue

Complete:

- 3 technical working group meetings
- 3 interviews with industry stakeholders

Pending:

- Affordable housing trust fund mechanism in final draft form
- CDFI expansion recommendations in final draft form



Oversight and Leadership

- Mayor John Engen
- Commissioner Nicole Rowley
- City Council President Bryan von Lossberg
- Land Use and Planning Committee Chair John Dibari
- Councilwoman Mirtha Becerra
- Dale Bickell, Chief Administrative Officer
- Ellen Buchanan, Director of Housing, Redevelopment, and Economic Development
- Donna Gaukler, Director of Parks and Recreation
- Mike Haynes, Director of Development Services



HOUSING AND COMMUNITY DEVELOPMENT

400 RYMAN MISSOULA, MONTANA 59802-4297

Housing Policy Steering Committee Membership



