

PHOTOGRAPHIC DOCUMENTATION
SUPPLEMENTAL INFORMATION

MISSOULA MERCANTILE
110 N. Higgins Avenue
Missoula
Missoula County
Montana

Location:	110 North Higgins Avenue Missoula, Montana 59802
Date of Construction:	1882 to 1904 with renovations as late as the 1940s.
Designer:	Edward Selander and Various
Builder:	Unknown
Present Owner:	110 N. Higgins Owners, LLC
Present Use:	Vacant
Significance:	<p>Most of the building was constructed between 1882 and 1904 when the property was owned by the Missoula Mercantile Company. The Missoula Mercantile originally was known as Bonner and Welch, being founded by E.L. Bonner, D.J. Welch, and Richard Eddy in 1866, and was located west of the present building site. The firm became known as E.L. Bonner and Company when D.J. Welch retired in 1871 and as Eddy, Hammond and Company when Andrew B. Hammond joined the firm in 1876. The company moved its store to its present location in 1877 and incorporated as the Missoula Mercantile Company in 1885, which owned the building until 1959, when it was purchased by Alstores Realty Corporation.</p> <p>The building is eligible for listing under Criterion B due to its association with E.L. Bonner, A.B. Hammond, and C.H. McLeod, all men who not only exercised a major influence on the formation, development and operation of the Mercantile, but also were principals in companies that were tied to the Mercantile and had a major impact on the development of Missoula and western Montana (e.g. the Montana Improvement Company, the Big Blackfoot Milling and Manufacturing Company, and the First National Bank of Missoula).</p> <p>The building also qualifies for listing under Criterion C. It is a large, pivotal building at the intersection of Higgins Avenue and Front Street (the axis of the original townsite) and still covers almost one-half block. It is constructed in the vernacular commercial style, and features distinctive and elaborate design elements, including large metal cornice, the cast iron storefront and support posts, Colonial Revival window hoods, and numerous cast iron window and door covers on the north (alleyway) side of the building.</p>

MISSOULA MERCANTILE PHOTOGRAPHIC DOCUMENTATION

INDEX TO PHOTOGRAPHS

MISSOULA MERCANTILE
110 N. Higgins Avenue
Missoula
Missoula County
Montana

INDEX TO EXTERIOR PHOTOGRAPHS

Jen Gress, Photographer, September 2016

Tom Zavitz, Photographer, September 2016

- MERC-EXT-1 GENERAL PERSPECTIVE VIEW LOOKING NORTHEAST
- MERC-EXT-2 GENERAL PERSPECTIVE VIEW LOOKING NORTHWEST
- MERC-EXT-3 GENERAL PERSPECTIVE VIEW LOOKING SOUTHEAST
- MERC-EXT-4 GENERAL PERSPECTIVE VIEW LOOKING SOUTHWEST
- MERC-EXT-5 WEST ELEVATION AT NORTH END OF THE STRUCTURE (KNOWN AS THE PHARMACY)
- MERC-EXT-6 WEST ELEVATION AT MIDSECTION OF THE STRUCTURE
- MERC-EXT-7 WEST ELEVATION AT THE SOUTH END OF THE STRUCTURE
- MERC-EXT-8 WEST ELEVATION DETAIL VIEW OF SECOND STORY, 1940'S-ERA RECTANGULAR PICTURE WINDOW OPENING
- MERC-EXT-9 WEST ELEVATION DETAIL VIEW OF SECOND STORY, 1940'S-ERA SMALL WINDOW OPENING.
- MERC-EXT-10 WEST ELEVATION DETAIL VIEW OF ORIGINAL WINDOW OPENINGS ABOVE THE ENTRANCE CANOPY ON HIGGINS AVENUE.
- MERC-EXT-11 WEST ELEVATION DETAIL VIEW OF PAIRED, ONE-OVER-ONE, DOUBLE HUNG WINDOWS WITH ARCHED TRANSOM AT SECOND STORY OF PHARMACY BUILDING.

- MERC-EXT-12 WEST ELEVATION DETAIL OF WINDOW FRAMING BETWEEN PAIRED, ONE-OVER-ONE WINDOWS OF THE PHARMACY BUILDING.
- MERC-EXT-13 WEST ELEVATION DETAIL VIEW OF LUXFER DIVIDED LIGHT TRANSOM ABOVE STOREFRONT AT PHARMACY BUILDING.
- MERC-EXT-14 WEST ELEVATION DETAIL VIEW OF CA. 1906 CAST IRON STOREFRONT DISPLAY WINDOWS AND DIVIDED-LIGHT TRANSOM ABOVE.
- MERC-EXT-15 WEST ELEVATION DETAIL VIEW OF 1906 METAL FRAMING OF DISPLY WINDOWS.
- MERC-EXT-16 WEST ELEVATION DETAIL VIEW OF STOREFRONT WINDOWS WITH COPPER ENTABLATURE ABOVE.
- MERC-EXT-17 WEST ELEVATION DETAIL VIEW OF ART NUVEAU CANOPY AND RECESSED ENTRY.
- MERC-EXT-18 WEST ELEVATION DETAIL VIEW OF CANOPY ENTABLATURE.
- MERC-EXT-19 WEST ELEVATION DETAIL VIEW OF COPPER COLUMN SUPPORTING THE CANOPY.
- MERC-EXT-20 WEST ELEVATION DETAIL VIEW OF CANOPY AND ENTABLATURE.
- MERC-EXT-21 DETAIL VIEW OF FASCIA OF COPPER CANOPY.
- MERC-EXT-22 DETAIL VIEW OF INSIDE FACE OF FASCIA OF CANOPY.
- MERC-EXT-23 DETAIL VIEW OF RECESSED ENTRANCE VESTIBULE AND HEXAGONAL TILE INLAY.
- MERC-EXT-24 DETAIL OF HEXAGONAL TILE MOSAIC.
- MERC-EXT-25 DETAIL VIEW OF SOUTHWEST CORNER OF THE MERCANTILE SHOWING THE CAST IRON COLUMN.
- MERC-EXT-26 DETAIL VIEW OF MESKER BROTHER’S CAST IRON COLUMN AT THE SW CORNER OF THE BUILDING.
- MERC-EXT-27 DETAIL OF NAME PLATE ON COLUMN WHICH READS “MESKER BROS. -FRONT BUILDERS –ST. LOUIS, MO. – PAT. OCT. 4 ‘87”.
- MERC-EXT-28 DETAIL VIEW OF MESKER COLUMN CAPITAL AND INTERSECTION WITH STOREFRONT DISPLAY WINDOWS.
- MERC-EXT-29 PHARMACY ENTRANCE

- MERC-EXT-30 DETAIL VIEW OF ROUND CAST IRON COLUMN AT PHARMACY STOREFRONT DISPLAY WINDOWS.
- MERC-EXT-31 WEST ELEVATION DETAIL VIEW OF CORNICE, SHOWING DENTICULATION, ENTABLATURE, BRACKETS AND METAL CORNICE.
- MERC-EXT-32 WEST ELEVATION DETAIL VIEW OF PHARMACY PARAPET AND CORNICE SHOWING INTERSECTION WITH MERC PARAPET.
- MERC-EXT-33 DETAIL VIEW OF PRESSED METAL DENTICULATED CORNICE MOULDING ABOVE PHARMACY.
- MERC-EXT-34 DETAIL VIEW OF DENTICULATED CORNICE MOULDING, PRESSED METAL ENTABLATURE AND BRICK CORBELS AT PHARMACY BUILDING.
- MERC-EXT-35 DETAIL VIEW OF PARAPET SHOWING INTERSECTION OF TWO CORNICE TREATMENTS ABOVE HIGGINS AVENUE.
- MERC-EXT-36 SOUTH ELEVATION AT WEST END OF MERCANTILE.
- MERC-EXT-37 SOUTH ELEVATION AT MIDSECTION OF MERCANTILE.
- MERC-EXT-38 SOUTH ELEVATION VIEW AT MIDSECTION OF MERCANTILE.
- MERC-EXT-39 SOUTH ELEVATION AT EAST END OF MERCANTILE.
- MERC-EXT-40 SOUTH ELEVATION DETAIL VIEW OF 1940'S ERA WINDOW OPENING AT SECOND STORY, WEST END OF STRUCTURE.
- MERC-EXT-41 SOUTH ELEVATION DETAIL VIEW OF ORIGINAL, CAST IRON, PEDIMENTED, ONE-OVER-ONE, DOUBLE-HUNG, WOOD SASH WINDOWS.
- MERC-EXT-42 DETAIL VIEW OF PEDIMENTED, ONE-OVER-ONE, DOUBLE-HUNG, WOOD SASH WINDOWS.
- MERC-EXT-43 DETAIL VIEW OF CAST IRON WINDOW HOOD MOULDING.
- MERC-EXT-44 SOUTH ELEVATION DETAIL VIEW OF SUNBURST STYLE HOOD MOULDING ABOVE DOUBLE HUNG WOOD SASH WINDOWS, SECOND STORY.
- MERC-EXT-45 SOUTH ELEVATION DETAIL OF SUNBURST STYLE HOOD MOULDING.
- MERC-EXT-46 SOUTH ELEVATION DETAIL VIEW OF RECESSED ENTRY AND STOREFRONT DISPLAY WINDOWS WITH CAST IRON COLUMNS.

MERC-EXT-47 MESKER COLUMN DETAIL VIEW.

MERC-EXT-48 DETAIL VIEW OF SOUTH SIDE OF MESKER COLUMN BASE.

MERC-EXT-49 DETAIL VIEW OF SUNBURST PATTERN AND DECORATIVE BANDING AROUND THE MESKER COLUMN.

MERC-EXT-50 DETAIL VIEW OF THE MESKER COLUMN CAPITAL AND METAL LINTEL ABOVE.

MERC-EXT-51 DETAIL VIEW OF ROUND, FLUTED CAST IRON COLUMN WITH CORINTHIAN CAPITAL.

MERC-EXT-52 DETAIL OF CAST IRON ROUND COLUMN INCORPORATED INTO NON-HISTORIC STOREFRONT AND BRICK BULKHEAD.

MERC-EXT-53 DETAIL VIEW OF CAST IRON ROUND COLUMN BASE.

MERC-EXT-54 DETAIL VIEW OF ALTERNATE CAPITAL OF CAST IRON ROUND COLUMN.

MERC-EXT-55 DETAIL VIEW OF ALTERNATE CAPITAL OF CAST IRON ROUND COLUMN.

MERC-EXT-56 DETAIL VIEW OF COLUMN CAPITAL.

MERC-EXT-57 DETAIL VIEW OF COLUMN CAPITAL.

MERC-EXT-58 DETAIL VIEW OF BRICK PILASTER AT SOUTHEAST SECTION OF THE BUILDING.

MERC-EXT-59 DETAIL VIEW OF BRICK AND STONE PILASTER WITH METAL CAPITAL AT SOUTHEAST SECTON OF THE BUILDING.

MERC-EXT-60 BRICK PILASTER STONE BASE.

MERC-EXT-61 BRICK CORBEL TABLE AND DENTILCULATION AT SOUTH ELEVATION PARAPET.

MERC-EXT-62 DETAIL VIEW OF BRICK CORBEL TABLE AT SOUTH ELEVATION PARAPET WHERE TWO SECTIONS OF CONSTRUCTION INTERSECT.

MERC-EXT-63 DETAIL VIEW OF BRICK CORBEL TABLE.

MERC-EXT-64 GENERAL PERSPECTIVE VIEW OF EAST ELEVATION, LOOKING SOUTHEAST.

MERC-EXT-65 EAST ELEVATION AT SOUTH END OF THE MERC.

MERC-EXT-66 EAST ELEVATION AT NORTH END OF THE MERC.

MERC-EXT-67 DETAIL VIEW OF SECOND STORY WINDOW AT EAST ELEVATION.

MERC-EXT-68 NORTH ELEVATION VIEW AT EAST END OF THE BUILDING.

MERC-EXT-69 NORTH ELEVATION VIEW AT THE MIDSECTION OF THE BUILDING.

MERC-EXT-70 NORTH ELEVATION VIEW OF THE PHARMACY (WEST) PORTION OF THE BUILDING.

MERC-EXT-71 NORTH ELEVATION VIEW OF THE PHARMACY LOOKING SOUTHEAST.

MERC-EXT-72 DETAIL VIEW OF SEGMENTALLY-ARCHED WINDOW OPENING ON THE NORTH ELEVATION WITH METAL SHUTTER CLOSED.

MERC-EXT-73 DETAIL VIEW OF SEGMENTALLY ARCHED WINDOW SHOWING SHUTTER CONSTRUCTION.

MERC-EXT-74 DETAIL VIEW OF SECOND STORY SEGMENTALLY ARCHED WINDOW WITH HINGED SHUTTER.

MERC-EXT-75 DETAIL VIEW OF SHUTTER CONSTRUCTION AND BRICK MASONRY.

MERC-EXT-76 ELEVATION VIEW OF SECOND STORY WINDOWS WITH SHUTTERS ON ROLLING TRACKS.

MERC-EXT-77 DETAIL VIEW OF TWO-OVER-TWO, DOUBLE-HUNG, WOOD SASH WINDOWS WITH SHUTTERS ON ROLLER TRACKS ABOVE.

MERC-EXT-78 DETAIL VIEW OF HARDWARE OF ROLLER TRACK AND SHUTTER.

MERC-EXT-79 PERSPECTIVE VIEW OF SEGMENTALLY ARCHED WINDOWS IN MIDSECTION OF THE BUILDING, NORTH ELEVATION.

MERC-EXT-80 DETAIL VIEW OF SEGMENTALLY ARCHED WINDOW OPENING WITH TWO-OVER-TWO, DOUBLE-HUNG, WOOD SASH WINDOW.

MERC-EXT-81 DETAIL VIEW OF MASONRY AND CONSTRUCTION, SHOWING RELIEVING ARCH ABOVE SEGMENTAL ARCHED WINDOW OPENING.

MERC-EXT-82 DETAIL VIEW OF STONE SILL AT WINDOWS ON NORTH ELEVATION.

- MERC-EXT-83 DETAIL VIEW OF ONE-OVER-ONE, DOUBLE-HUNG, WOOD SASH WINDOW ON THE NORTH ELEVATION AT THE PHARMACY SECTION OF THE BUILDING.
- MERC-EXT-84 DETAIL VIEW OF DOORWAY LEADING INTO NORTHEAST SECTION OF THE BUILDING. SHOWING SHUTTERS, TRANSOM ABOVE, AND WOOD PANEL DOORS.
- MERC-EXT-85 DETAIL VIEW OF LARGE OPENING IN MASONRY WITH DOUBLE DOORS AND BEADBOARD SURROUND.
- MERC-EXT-86 DETAIL VIEW OF TALL SHUTTERS ENCLOSING DOORWAY.
- MERC-EXT-87 DETAIL VIEW OF TWO-STORY METAL SHUTTER ABOVE DOOR OPENINGS ON THE MIDSECTION OF THE NORTH ELEVATION.
- MERC-EXT-88 DETAIL VIEW OF SEGMENTALLY ARCHED DOORWAY AND METAL DOUBLE DOORS AT PHARMACY SECTION OF THE NORTH ELEVATION.
- MERC-EXT-89 DETAIL VIEW OF DENTICULATION AND CORBEL TABLE IN MASONRY AT PARAPET OF PHARMACY BUILDING.
- MERC-EXT-90 DETAIL VIEW OF GHOST SIGN ON NORTH ELEVATION OF PHARMACY BUILDING.
- MERC-EXT-91 DETAIL VIEW OF HYDRAULIC PRESSED BRICK MASONRY IN COMMON BOND.
- MERC-EXT-92 DETAIL VIEW OF HYDRAULIC PRESSED BRICK MASONRY OF THE PHARMACY BUILDING.
- MERC-EXT-93 DETAIL VIEW OF BRICK CONSTRUCTION AND SANDSTONE BELTCOURSE ABOVE CORBEL TABLE ON PHARMACY BUILDING'S NORTH ELEVATION.
- MERC-EXT-94 DETAIL VIEW OF MASONRY CONSTRUCTION OF NORTH ELEVATION.
- MERC-EXT-95 DETAIL VIEW OF MASONRY CONSTRUCTION OF NORTH ELEVATION.

MISSOULA MERCANTILE PHOTOGRAPHIC DOCUMENTATION

INDEX TO PHOTOGRAPHS

MISSOULA MERCANTILE
110 N. Higgins Avenue
Missoula
Missoula County
Montana

INDEX TO INTERIOR PHOTOGRAPHS

Jen Gress, Photographer, September 2016
Tom Zavitz, Photographer, September 2016

BASEMENT

- MERC-INT-1 GENERAL VIEW OF ROOM 8, VIEW LOOKING NORTH
- MERC-INT-2 GENERAL VIEW OF ROOM 8 VIEW LOOKING NORTHWEST
- MERC-INT-3 GENERAL VIEW OF ROOM 8, VIEW LOOKING SOUTH
- MERC-INT-4 GENERAL VIEW OF ROOM 8, VIEW LOOKING EAST
- MERC-INT-5 GENERAL VIEW OF ROOM 8, VIEW LOOKING NORTHEAST AT STAIRWELL
- MERC-INT-6 DETAIL VIEW OF WALL AND DOORWAY INTO PHARMACY BASEMENT, LOOKING NORTH.
- MERC-INT-7 GENERAL VIEW OF ROOM 1 (PHARMACY BASEMENT) LOOKING WEST.
- MERC-INT-8 GENERAL VIEW OF ROOM 1 (PHARMACY BASEMENT) LOOKING EAST.
- MERC-INT-9 GENERAL VIEW OF ROOM 2, VIEW LOOKING NORTHEAST.
- MERC-INT-10 GENERAL VIEW OF ROOM 2, VIEW LOOKING EAST.
- MERC-INT-11 GENERAL VIEW OF ROOM 2, VIEW LOOKING NORTHWEST.
- MERC-INT-12 GENERAL VIEW OF ROOM 6, VIEW LOOKING EAST INTO ROOM 7.
- MERC-INT-13 GENERAL VIEW OF ROOM 6, VIEW LOOKING WEST AT BRICK WALL.

- MERC-INT-14 GENERAL VIEW OF ROOM 7, LOOKING EAST CONCRETE SEGMENTAL ARCHED DOORWAY.
- MERC-INT-15 GENERAL VIEW OF ROOM 9, VIEW LOOKING SOUTHEAST.
- MERC-INT-16 GENERAL VIEW OF ROOM 9, VIEW LOOKING NORTHWEST AT RUBBLE MASONRY WALL WITH CONCRETE BLOCK INFILL AND SEGMENTALLY ARCHED OPENINGS FILLED WITH RANDOM RUBBLE.
- MERC-INT-17 GENERAL VIEW OF ROOM 9, VIEW LOOKING SOUTHEAST.
- MERC-INT-18 GENERAL VIEW OF ROOM 9, VIEW LOOKING SOUTH AT RUBBLE MASONRY WALL.
- MERC-INT-19 GENERAL VIEW OF ROOM 11, VIEW LOOKING SOUTH AT THE SOUTHWEST CORNER OF THE BASEMENT.
- MERC-INT-20 GENERAL VIEW OF ROOM 11, VIEW LOOKING AT THE SOUTHWEST CORNER OF THE BASEMENT.
- MERC-INT-21 GENERAL VIEW OF ROOM 11, VIEW LOOKING NORTHEAST.
- MERC-INT-22 GENERAL VIEW OF ROOM 11, VIEW LOOKING NORTH.
- MERC-INT-23 GENERAL VIEW OF ROOM 11, VIEW LOOKING NORTH TOWARD ROOM 7.
- MERC-INT-24 GENERAL VIEW OF ROOM 11, VIEW LOOKING EAST TOWARDS THE STAIRWELL.
- MERC-INT-25 DETAIL VIEW OF STRUCTURAL ELEMENTS IN ROOM 11, LOOKING EAST TOWARD THE STAIRWELL WITH BRICK COLUMNS, HEAVY TIMBER POSTS AND BEAMS SUPPORTING FLOOR JOISTS ABOVE.
- MERC-INT-26 DETAIL VIEW OF ARCHED OPENING TO VOID UNDER THE SIDEWALK ALONG FRONT STREET (LOOKING NORTH).
- MERC-INT-27 DETAIL VIEW OF VOID BELOW THE FRONT STREET SIDEWALK, VIEW LOOKING WEST.
- MERC-INT-28 DETAIL VIEW OF STAIRS LEADING TO FIRST FLOOR WITH REMAINS OF TURNED BALUSTERS, WOOD RAILING AND WOODEN NEWEL POST.
- MERC-INT-29 DETAIL VIEW OF DOORWAY TO ELEVATOR LOBBY, BASEMENT FLOOR, LOOKING SOUTH.

- MERC-INT-30 DETAIL VIEW OF METAL FLOORING IN ELEVATOR LOBBY, BASEMENT FLOOR (ROOM 15) WITH ENTRANCE TO CRAWLSPACE VISIBLE UPPER FRAME OF VIEW.
- MERC-INT-31 GENERAL VIEW OF ROOM 18 (PARTITIONS REMOVED) VIEW LOOKING SOUTH.
- MERC-INT-32 DETAIL VIEW OF ROOM 18 (PARTITIONS REMOVED) LOOKING SOUTH AT SEGMENTALLY ARCHED OPENING.
- MERC-INT-33 DETAIL VIEW OF SOUTHEAST CORNER OF ROOM 18 (PARTITIONS REMOVED).
- MERC-INT-34 GENERAL VIEW OF ROOM 20, VIEW LOOKING SOUTH WITH STAIRS IN THE RIGHT FRAME.
- MERC-INT-35 DETAIL VIEW OF NORTH WALL OF ROOM 20, SHOWING THE PAINTED MURALS.
- MERC-INT-36 DETAIL VIEW OF NORTH WALL OF ROOM 20, SHOWING PAINTED MURALS AND WOODEN CUBBIES HANGING FROM THE CEILING JOISTS.
- MERC-INT-37 DETAIL VIEW OF VOID BELOW FRONT STREET SIDEWALK LOOKING EAST.
- MERC-INT-38 DETAIL VIEW OF ARCHED OPENING BETWEEN THE VOIDS BELOW FRONT STREET SIDEWALK LOOKING SOUTHEAST.
- MERC-INT-39 DETAIL VIEW OF CEILING OF ROOM 9, SHOWING THE OPENING WHERE A STAIRWELL ONCE LEAD DOWN TO THE BASEMENT, VIEW LOOKING SOUTH.
- MERC-INT-40 DETAIL VIEW OF POURED CONCRETE COLUMNS, BEAMS AND FLOOR JOISTS ABOVE ROOM 2, BASEMENT LEVEL.
- MERC-INT-41 DETAIL VIEW OF ROOM 9 STRUCTURAL ELEMENTS, INCLUDING POURED CONCRETE COLUMNS, BEAMS AND FLOOR JOISTS.
- MERC-INT-42 DETAIL VIEW OF ROOM 11, WEST SIDE LOOKING NORTH.
- MERC-INT-43 DETAIL VIEW OF BRACED 2X JOISTS RESTING ON A SILL ABOVE RUBBLE MASONRY WALL IN ROOM 15.
- MERC-INT-44 DETAIL VIEW OF PAINTED JOISTS WITH PEGS WHERE MERCHANDISE WAS STORED IN ROOM 18.
- MERC-INT-45 DETAIL VIEW OF PAINTED JOISTS WHERE MERCHANDISE WAS HUNG ON PEGS IN THE BASEMENT, ROOM 18.

- MERC-INT-46 DETAIL VIEW OF PAINTED JOIST WITH NAILS IN IT WHERE ITEMS WERE STORED IN THE BASEMENT, ROOM 18.
- MERC-INT-47 DETAIL VIEW OF COLUMN IN ROOM 2 SHOWING BOARD-FORMED CONCRETE CONSTRUCTION.
- MERC-INT-48 DETAIL VIEW OF COLUMN IN ROOM 8, SHOWING BEAD BOARD PANELS OVER BOARD-FORMED CONCRETE COLUMN.
- MERC-INT-49 DETAIL VIEW OF BOARD-FORMED CONCRETE CONSTRUCTION OF COLUMNS AND JOISTS SPANNING BETWEEN CONCRETE FLOOR SLABS (CONTINUOUS, REINFORCED CONCRETE CONSTRUCTION) IN ROOM 9.
- MERC-INT-50 DETAIL VIEW OF BRICK COLUMN IN ROOM 11, SHOWING COMMON BOND CONSTRUCTION WITH PITCH-FACED STONE COLUMN CAPITAL SUPPORTING HEAVY TIMBER WOOD BEAMS WHICH IN TURN SUPPORT THE 4X FLOOR JOISTS ABOVE.
- MERC-INT-51 DETAIL VIEW OF BRICK-CONSTRUCTED COLUMNS IN ROOM 11.
- MERC-INT-52 DETAIL VIEW OF RUBBLE MASONRY PIER IN ROOM 11, THAT APPEARS TO CONTINUE VERTICALLY THROUGH THE BUILDING UP TO SECOND FLOOR, LOCATED ON THE NORTH END OF THE BUILDING.
- MERC-INT-53 DETAIL VIEW OF HEAVY TIMBER COLUMNS ON THE WEST SIDE OF ROOM 11, VIEW LOOKING NORTHEAST.
- MERC-INT-54 DETAIL VIEW OF CAST IRON COLUMN CAP ATOP HEAVY TIMBER COLUMN IN ROOM 11.
- MERC-INT-55 DETAIL VIEW OF TIMBER FRAMING IN CRAWLSPACE BELOW THE WESTERN-MOST (AND OLDEST) SECTION OF THE BUILDING AT THE CORNER OF FRONT AND HIGGINS.
- MERC-INT-56 DETAIL VIEW OF CRAWLSPACE BELOW THE OLDEST PORTION OF THE STRUCTURE, SHOWING WOOD POST AND BEAM CONSTRUCTION AND METAL PIPES RUNNING THROUGH AN OPENING IN THE FOUNDATION WALL.
- MERC-INT-57 DETAIL VIEW OF METAL PIPES SITUATED ON THE GROUND IN THE CRAWLSPACE BELOW THE SOUTHWEST CORNER OF THE STRUCTURE.
- MERC-INT-58 DETAIL VIEW OF RANDOM RUBBLE FOUNDATION WALL WITH BRICK INFILL BELOW THE OLDEST SECTION OF THE BUILDING, SOUTHWEST CORNER.

- MERC-INT-59 DETAIL VIEW OF ACCESS POINT IN ROOM 11 TO THE CRAWLSPACE UNDER THE SOUTHWEST CORNER OF THE BUILDING, WHICH IS THE OLDEST SECTION OF THE STRUCTURE.
- MERC-INT-60 DETAIL VIEW OF ELEVATOR.
- MERC-INT-61 DETAIL VIEW OF ELEVATOR SHAFT, VIEW LOOKING WEST.
- MERC-INT-62 DETAIL VIEW OF BOTTOM RISERS OF STAIRWELL LEADING UP TO FIRST FLOOR. STAIRS LOCATED IN THE MIDDLE OF ROOM 11.
- MERC-INT-63 DETAIL VIEW OF WOOD NEWEL POST AT BOTTOM OF STAIRS LOCATED IN MIDDLE OF ROOM 11.
- MERC-INT-64 DETAIL VIEW OF STAIRWELL IN ROOM 8, VIEW LOOKING EAST.
- MERC-INT-65 DETAIL VIEW OF STAIRWELL LEADING UP TO FIRST FLOOR, SHOWING TURNED BALUSTERS AND WOOD RISERS OF STAIRWELL IN MIDDLE OF ROOM 11.
- MERC-INT-66 DETAIL VIEW OF STAIRWELL LEADING UP TO FIRST FLOOR, LOCATED AT WESTERNMOST SECTION OF ROOM 11.
- MERC-INT-67 DETAIL VIEW OF NEWEL POST AND COLUMN AT WESTERNMOST STAIRS LEADING UP TO FIRST FLOOR, ROOM 11.
- MERC-INT-68 DETAIL VIEW OF STAIRWELL LOCATED IN ROOM 20.
- MERC-INT-69 DETAIL VIEW OF GRAFITTI ON THE EAST FACE OF THE ARCHED OPENING BETWEEN ROOM 6 AND 11.
- MERC-INT-70 DETAIL VIEW OF GRAFITTI ON WEST FACE OF THE ARCHED OPENING BETWEEN ROOM 6 AND 11.
- MERC-INT-71 DETAIL VIEW OF CAST IRON PIPES IN SOUTHEAST CORNER OF ROOM 1.
- MERC-INT-72 DETAIL VIEW OF CLOSET AND PIPEWORKS ON THE WEST WALL OF ROOM 8.
- MERC-INT-73 DETAIL VIEW OF GRAFITTI ON POURED CONCRETE COLUMN IN ROOM 2.
- MERC-INT-74 DETAIL VIEW OF CAST IRON PIPE PROTRUDING FROM NORTHWEST WALL OF ROOM 2.
- MERC-INT-75 DETAIL VIEW OF CAST IRON PIPE IN ROOM 8.

- MERC-INT-76 DETAIL VIEW OF CAST IRON PIPE IN ROOM 9, LOCATED ON SOUTH WALL.
- MERC-INT-77 DETAIL VIEW OF CAST IRON PIPES IN ROOM 9 LOCATED ON NORTH WALL.
- MERC-INT-78 DETAIL VIEW OF WOODEN STORAGE BIN IN ROOM 11.
- MERC-INT-79 ELEVATION VIEW OF WOODEN STORAGE BIN IN ROOM 11.
- MERC-INT-80 DETAIL VIEW OF LID OF WOODEN STORAGE BIN IN ROOM 11.
- MERC-INT-81 DETAIL VIEW OF WOOD CUT-OUT OF MAN'S POSTERIOR IN ROOM 20.
- MERC-INT-82 DETAIL VIEW OF CAST IRON PIPES AND SPIGGOTS RECESSED IN WOOD CAISSON IN FLOOR OF VOID UNDER THE SIDEWALK.
- MERC-INT-83 DETAIL VIEW PIPE STUB IN WALL ADJACENT TO FRONT STREET RIGHT-OF-WAY.
- MERC-INT-84 DETAIL VIEW OF SEGMENTAL-ARCHED OPENING COMPRISED OF RANDOM RUBBLE MASONRY AND COMMON BOND BRICK CONSTRUCTION, LOCATED BETWEEN ROOMS 6 AND 7.
- MERC-INT-85 DETAIL VIEW OF WALL CONSTRUCTION IN ROOM 6, SHOWING BRICK QUOINING AND PARGED RUBBLE MASONRY.
- MERC-INT-86 DETAIL VIEW OF RANDOM RUBBLE MASONRY WALL CONSTRUCTION IN ROOM 2, NORTH WALL.
- MERC-INT-87 DETAIL VIEW RANDOM RUBBLE MASONRY WALL CONSTRUCTION IN ROOM 2, NORTH WALL.
- MERC-INT-88 DETAIL VIEW OF POURED CONCRETE WALL CONSTRUCTION, ROOM 2, SOUTH WALL.
- MERC-INT-89 DETAIL VIEW OF SEGMENTAL-ARCHED OPENING, SHOWING BRICK CONSTRUCTION AND RUBBLE MASONRY WALL, SOUTH WALL OF ROOM 6.
- MERC-INT-90 DETAIL VIEW OF WALL CONSTRUCTION IN ROOM 8, SHOWING MASONRY AND PARGING BETWEEN PANELS OF BEAD BOARD.
- MERC-INT-91 DETAIL VIEW OF WALL CONSTRUCTION IN ROOM 9, VIEW LOOKING NORTHWEST AT RUBBLE MASONRY WALL WITH BRICK-CONSTRUCTED WALL CHASE.
- MERC-INT-92 DETAIL VIEW OF WALL CONSTRUCTION IN ROOM 9, LOOKING WEST, SHOWING VARIOUS MASONRY CONSTRUCTION METHODS INCLUDING RUBBLE MASONRY,

BOARD-FORMED, POURED CONCRETE, CONCRETE BLOCK AND METAL-COVERED DOOR.

MERC-INT-93 DETAIL VIEW OF RUBBLE MASONRY WALL WITH SEGMENTALLY-ARCHED OPENING OF BRICK CONSTRUCTION, VIEW LOOKING EAST FROM ROOM 11 TO ROOM 20.

MERC-INT-94 DETAIL VIEW OF EAST WALL OF ROOM 15 SHOWING RANDOM RUBBLE MASONRY CONSTRUCTION.

MERC-INT-95 DETAIL VIEW OF ROOM 18, LOOKING SOUTH AT FILLED SEGMENTALLY-ARCHED OPENING IN THE RANDOM RUBBLE WALL CONSTRUCTION.

MERC-INT-96 DETAIL VIEW OF RANDOM RUBBLE MASONRY WALL WITH SEGMENTALLY-ARCHED OPENING BETWEEN ROOMS 18 AND 20 WITH PIPES PUNCHED THROUGH WALL ABOVE OPENING.

MERC-INT-97 DETAIL VIEW OF RANDOM RUBBLE MASONRY WALL CONSTRUCTION IN VOID UNDER FRONT STREET SIDEWALK.

FIRST FLOOR

MERC-INT-98 GENERAL VIEW OF PHARMACY, VIEW LOOKING WEST.

MERC-INT-99 GENERAL VIEW OF PHARMACY, VIEW LOOKING EAST.

MERC-INT-100 GENERAL VIEW OF LOADING DOCK, VIEW LOOKING SOUTHEAST AT LOADING BAYS.

MERC-INT-101 GENERAL VIEW OF LOADING BAY, VIEW LOOKING SOUTH.

MERC-INT-102 GENERAL VIEW OF ROOM 106 ENTRANCE VESTIBULE WITH ART NEUVEAU CANOPY IN THE BACKGROUND.

MERC-INT-103 GENERAL VIEW OF ROOM 107 VIEW LOOKING NORTHEAST.

MERC-INT-104 GENERAL VIEW OF ROOM 107, VIEW LOOKING NORTHEAST.

MERC-INT-105 GENERAL VIEW OF ROOM 116, VIEW LOOKING SOUTHWEST AT THE 1906 CAST IRON STOREFRONT.

MERC-INT-106 GENERAL VIEW OF ROOM 116, VIEW LOOKING SOUTH.

MERC-INT-107 GENERAL VIEW OF ROOM 117, VIEW LOOKING NORTH.

- MERC-INT-108 GENERAL VIEW OF ROOM 117, VIEW LOOKING NORTH.
- MERC-INT-109 GENERAL VIEW OF MEZZANINE AND STAIRS AT NORTH END OF ROOM 117.
- MERC-INT-110 DETAIL VIEW OF STAIRS TO MEZZANINE, VIEW LOOKING NORTH.
- MERC-INT-111 GENERAL VIEW OF ROOM 118, VIEW LOOKING SOUTH.
- MERC-INT-112 GENERAL VIEW OF ROOM 119, VIEW LOOKING SOUTH.
- MERC-INT-113 GENERAL VIEW OF ROOM 119, VIEW LOOKING NORTHEAST.
- MERC-INT-114 GENERAL VIEW OF ROOM 119, VIEW LOOKING SOUTHEAST.
- MERC-INT-115 GENERAL VIEW OF ROOM 119 LOOKING NORTHWEST AT THE STAIRWELL.
- MERC-INT-116 GENERAL VIEW OF ROOM 122, VIEW LOOKING NORTH BETWEEN STAIRS AND HEAVY TIMBER COLUMNS.
- MERC-INT-117 GENERAL VIEW OF ROOM 124, VIEW LOOKING SOUTH.
- MERC-INT-118 GENERAL VIEW OF ROOM 124, VIEW LOOKING NORTH.
- MERC-INT-119 GENERAL VIEW OF ROOM 124, VIEW LOOKING EAST ALONG THE SOUTH WALL (FRONT STREET STOREFRONT).
- MERC-INT-120 GENERAL VIEW OF ROOM 124, VIEW LOOKING EAST FROM THE STAIRWELL.
- MERC-INT-121 GENERAL VIEW OF ROOM 124, VIEW LOOKING NORTHEAST AT THE STAIRWELL.
- MERC-INT-122 GENERAL VIEW OF ROOM 124, SHOWING THE DECORATIVE BALUSTRADE AND NEWEL POST OF THE STAIRWELL.
- MERC-INT-123 GENERAL VIEW OF ROOM 125, VIEW LOOKING NORTH.
- MERC-INT-124 DETAIL VIEW OF STOREFRONT WINDOWS AND RECESSED ENTRANCE OF THE PHARMACY, VIEW LOOKING WEST.
- MERC-INT-125 DETAIL VIEW OF LUXFER DIVIDED LIGHT TRANSOM ABOVE THE PHARMACY ENTRANCE WITH HIGGINS AVENUE IN THE BACKGROUND.

- MERC-INT-126 DETAIL VIEW OF LUXFER PRISMATIC GLASS TILES IN THE TRANSOM ABOVE THE PHARMACY ENTRANCE.
- MERC-INT-127 DETAIL VIEW OF RECESSED ENTRANCE VESTIBULE ADJACENT TO FRONT STREET, ROOM 119, VIEW LOOKING SOUTHEAST.
- MERC-INT-128 DETAIL VIEW OF GLASS BLOCK CEILING ABOVE ROOM 119.
- MERC-INT-129 DETAIL VIEW OF GLASS BLOCK PANELS ABOVE ROOM 119.
- MERC-INT-130 DETAIL VIEW OF PRISMATIC GLASS BLOCKS ABOVE ROOM 119.
- MERC-INT-131 DETAIL VIEW OF STOREFRONT WINDOWS AND BEADBOARD WALL PANELING ALONG SOUTH WALL OF ROOM 125.
- MERC-INT-132 DETAIL VIEW OF NORTH WALL OF ROOM 125, SHOWING DOORS AND WINDOWS.
- MERC-INT-133 DETAIL VIEW OF DOORS AND WINDOWS ON THE NORTH WALL OF ROOM 125.
- MERC-INT-134 DETAIL VIEW OF CONCRETE FEATURE WITH INCISED INITIALS IN THE FLOOR OF THE LOADING DOCK.
- MERC-INT-135 DETAIL VIEW OF THE PRESSED METAL CEILING IN ROOM 106.
- MERC-INT-136 DETAIL VIEW OF PRESSED METAL CEILING TILE IN ROOM 106.
- MERC-INT-137 DETAIL VIEW OF CAST CONCRETE CEILING IN ROOM 107.
- MERC-INT-138 DETAIL VIEW OF PRESSED METAL CEILING IN ROOM 116.
- MERC-INT-139 DETAIL VIEW OF WALL COVERINGS IN ROOM 117.
- MERC-INT-140 DETAIL VIEW OF PLASTER WALL SURFACE IN ROOM 117.
- MERC-INT-141 DETAIL VIEW OF WALL ANCHOR AND PICTURE RAIL ON WALL IN ROOM 117.
- MERC-INT-142 DETAIL VIEW OF STOREFRONT WINDOW, BULKHEAD, AND BEADBOARD WALL PANELING IN ROOM 118.
- MERC-INT-143 DETAIL VIEW OF PRESSED METAL CEILING AT THE EDGE OF THE WALL IN ROOM 119.
- MERC-INT-144 DETAIL VIEW OF PRESSED METAL CEILING IN ROOM 119.

- MERC-INT-145 GENERAL VIEW OF PRESSED METAL CEILING IN SOUTHEAST CORNER OF ROOM 119.
- MERC-INT-146 GENERAL VIEW OF PRESSED METAL CEILING IN ROOM 119.
- MERC-INT-147 DETAIL VIEW OF PRESSED METAL CEILING MEDALLION IN ROOM 119.
- MERC-INT-148 DETAIL VIEW OF PLASTER COVERED WALL IN ROOM 119.
- MERC-INT-149 DETAIL VIEW OF WALLPAPER IN ROOM 119.
- MERC-INT-150 DETAIL VIEW OF STOREFRONT AND WALL COVERINGS IN ROOM 125, VIEW LOOKING EAST.
- MERC-INT-151 DETAIL VIEW OF STOREFRONT AND WALL COVERING IN ROOM 125, VIEW LOOKING WEST.
- MERC-INT-152 DETAIL VIEW OF POURED CONCRETE COLUMN SET IN BETWEEN CONCRETE BLOCK WALL OF THE LOADING DOCK, VIEW LOOKING NORTH.
- MERC-INT-153 DETAIL VIEW OF CAST IRON COLUMNS IN ROOM 117, VIEW LOOKING NORTH.
- MERC-INT-154 DETAIL VIEW OF BOXED COLUMNS ADJACENT TO STAIRWELL IN ROOM 119, VIEW LOOKING NORTHWEST.
- MERC-INT-155 DETAIL VIEW OF CHAMFERED WOOD COLUMN IN ROOM 119, VIEW LOOKING NORTH.
- MERC-INT-156 DETAIL VIEW OF CHAMFERED WOOD COLUMN AND SCROLL-CUT BRACKET ABOVE COLUMN, VIEW LOOKING EAST.
- MERC-INT-157 DETAIL VIEW CHAMFERED WOOD COLUMNS AND CAST IRON COLUMN CAPS IN ROOM 124.

SECOND FLOOR

- MERC-INT-158 GENERAL VIEW OF ROOM 215 VIEW LOOKING WEST.
- MERC-INT-159 GENERAL VIEW OF ROOM 205, VIEW LOOKING NORTHWEST.
- MERC-INT-160 GENERAL VIEW OF ROOM 205, VIEW LOOKING NORTHEAST.
- MERC-INT-161 GENERAL VIEW OF ROOM 205, VIEW LOOKING EAST.

MERC-INT-162	GENERAL VIEW OF ROOM 205, VIEW LOOKING SOUTHEAST.
MERC-INT-164	GENERAL VIEW OF ROOM 242, VIEW LOOKING EAST ALONG FRONT STREET ELEVATION.
MERC-INT-165	GENERAL VIEW OF ROOM 242, VIEW LOOKING NORTHEAST.
MERC-INT-166	GENERAL VIEW OF ROOM 242, VIEW LOOKING SOUTHWEST.
MERC-INT-167	GENERAL VIEW OF ROOM 213, VIEW LOOKING NORTH.
MERC-INT-168	DETAIL VIEW OF PRESSED METAL CEILING IN ROOM 205.
MERC-INT-169	DETAIL VIEW OF PRESSED METAL CEILING (CORNER DETAIL) IN ROOM 205.
MERC-INT-170	DETAIL VIEW OF LIGHT MONITOR.
MERC-INT-171	DETAIL VIEW OF LIGHT MONITOR.
MERC-INT-172	DETAIL VIEW OF LIGHT MONITOR.
MERC-INT-173	DETAIL VIEW OF LIGHT MONITOR.
MERC-INT-174	DETAIL VIEW OF LIGHT MONITOR.
MERC-INT-175	DETAIL VIEW OF CHAMFERED WOOD COLUMNS AND BRICK WALL IN ROOM 242.
MERC-INT-176	DETAIL VIEW OF CHAMFERED WOOD COLUMN IN ROOM 242.
MERC-INT-177	DETAIL VIEW OF CHAMFERED WOOD COLUMN WITH LAQUER FINISH.
MERC-INT-178	DETAIL VIEW PLASTER OVER BRICK WALL IN ROOM 238.
MERC-INT-179	DETAIL VIEW OF BRICK WALL CONSTRUCTION IN ROOM 238 AND 242.
MERC-INT-180	DETAIL VIEW OF GLASS BLOCK PANEL IN FLOOR OF ROOM 241.
MERC-INT-181	DETAIL VIEW OF ARCHED WINDOWS IN PHARMACY.
MERC-INT-182	DETAIL VIEW OF DIVIDED LIGHT ARCHED WINDOW IN PHARMACY.

MERC-INT-183	DETAIL VIEW OF DECORATIVE WOOD FRAMING AROUND WINDOWS IN PHARMACY.
MERC-INT-184	DETAIL VIEW OF DECORATIVE WOOD FRAMING OF PHARMACY WINDOWS.
MERC-INT-185	DETAIL VIEW OF DECORATIVE WINDOW FRAME IN ROOM 242.
MERC-INT-186	DETAIL VIEW OF BASE MOULDING AND WINDOW SILL IN ROOM 242.
MERC-INT-187	DETAIL VIEW OF WINDOW TRIM AND UPPER SASH OF WINDOW IN ROOM 242.
MERC-INT-188	DETAIL VIEW OF MEETING RAIL AND UPPER SASH OF WINDOW IN ROOM 242.
MERC-INT-189	DETAIL VIEW OF PULLEY CORD FOR WINDOW COUNTERWEIGHT IN UPPER SASH OF WINDOW IN ROOM 242.
MERC-INT-190	DETAIL VIEW OF WINDOWS IN UPPER STORY, VIEW LOOKING SOUTH.
MERC-INT-191	DETAIL VIEW OF WINDOWS IN UPPER STORY, VIEW LOOKING SOUTHEAST.
MERC-INT-192	DETAIL VIEW OF WINDOWS IN ROOM 242.
MERC-INT-193	CONTEXT VIEW FOR VAULT ON SECOND FLOOR.
MERC-INT-194	DETAIL VIEW OF VAULT DOOR, LOOKING AT THE EXTERIOR OF THE DOOR.
MERC-INT-195	DETAIL VIEW OF VAULT DOOR, LOOKING AT THE INTERIOR SIDE OF THE DOOR.
MERC-INT-196	DETAIL VIEW OF VAULT DOOR, SHOWING DECORATIVE ENGRAVING ON THE INTERIOR-FACING FRAME OF THE DOOR.
MERC-INT-197	DETAIL VIEW OF VAULT INTERIOR, LOOKING NORTH AT THE SAFE AND SHELVES LINING THE INTERIOR.
MERC-INT-198	DETAIL VIEW OF VAULT INTERIOR, LOOKING SOUTHEAST AT THE FILING CABINETS.
MERC-INT-199	DETAIL VIEW OF VAULT INTERIOR, VIEW LOOKING INTO THE SAFE.
MERC-INT-200	DETAIL VIEW OF VAULT INTERIOR, SHOWING TUMBLER ON THE SAFE DOOR AND TEXT.

MERC-INT-201	DETAIL VIEW OF ELEVATOR SHAFT ON SECOND FLOOR.
MERC-INT-202	DETAIL VIEW OF ELEVATOR GATE AND INTERIOR OF ELEVATOR SHAFT.
MERC-INT-203	DETAIL VIEW OF TOP OF ELEVATOR.
MERC-INT-204	DETAIL VIEW OF ELEVATOR SHAFT.
MERC-INT-205	DETAIL VIEW OF METAL SPIRAL STAIRCASE LEADING TO PENTHOUSE.
MERC-INT-206	DETAIL VIEW OF STAIRCASE LEADING TO ROOM 119.
MERC-INT-207	CONTEXT VIEW OF STAIRCASE LEADING TO ROOM 119.
MERC-INT-208	DETAIL VIEW OF TURNED BALUSTERS.
MERC-INT-209	DETAIL VIEW BALUSTRADE WITH TURNED BALUSTERS OF STAIRWELL LEADING TO ROOM 124.
MERC-INT-210	DETAIL VIEW OF ELECTRICAL CABINETS ON NORTH WALL.
MERC-INT-211	DETAIL VIEW OF RADIATOR.
MERC-INT-212	DETAIL VIEW OF RADIATOR.
MERC-INT-213	DETAIL VIEW OF PENTHOUSE, VIEW LOOKING NORTHEAST.
MERC-INT-214	DETAIL VIEW OF PENTHOUSE, VIEW LOOKING NORTH.
MERC-INT-215	DETAIL VIEW OF PENTHOUSE, VIEW LOOKING EAST.
MERC-INT-216	DETAIL VIEW OF PENTHOUSE DOOR TO ELEVATOR LOBBY.
MERC-INT-217	DETAIL VIEW OF ELEVATOR LOBBY AND DOOR TO ROOF.
MERC-INT-218	DETAIL VIEW OF ELEVATOR DOOR.
MERC-INT-219	DETAIL VIEW OF ELEVATOR MECHANICAL SUITE.
MERC-INT-220	DETAIL VIEW OF LIGHT MONITOR IN PENTHOUSE FROM ROOF.
MERC-INT-221	DETAIL VIEW OF CHIMNEY ON TOP OF ROOF.
MERC-INT-222	DETAIL VIEW OF LIGHT MONITOR FROM TOP OF ROOF.

MISSOULA MERCANTILE PHOTOGRAPHIC DOCUMENTATION
EXTERIOR VIEWS



MERC-EXT-1



MERC-EXT-2

MISSOULA MERCANTILE PHOTOGRAPHIC DOCUMENTATION
EXTERIOR VIEWS



MERC-EXT-3



MERC-EXT-4

MISSOULA MERCANTILE PHOTOGRAPHIC DOCUMENTATION
EXTERIOR VIEWS



MERC-EXT-5



MERC-EXT-6

MISSOULA MERCANTILE PHOTOGRAPHIC DOCUMENTATION
EXTERIOR VIEWS



MERC-EXT-7



MERC-EXT-8

MISSOULA MERCANTILE PHOTOGRAPHIC DOCUMENTATION
EXTERIOR VIEWS



MERC-EXT-9



MERC-EXT-10

MISSOULA MERCANTILE PHOTOGRAPHIC DOCUMENTATION
EXTERIOR VIEWS



MERC-EXT-11



MERC-EXT-12

MISSOULA MERCANTILE PHOTOGRAPHIC DOCUMENTATION
EXTERIOR VIEWS



MERC-EXT-13



MERC-EXT-14

MISSOULA MERCANTILE PHOTOGRAPHIC DOCUMENTATION
EXTERIOR VIEWS



MERC-EXT-15

MISSOULA MERCANTILE PHOTOGRAPHIC DOCUMENTATION
EXTERIOR VIEWS



MERC-EXT-16

MISSOULA MERCANTILE PHOTOGRAPHIC DOCUMENTATION
EXTERIOR VIEWS



MERC-EXT-17



MERC-EXT-18

MISSOULA MERCANTILE PHOTOGRAPHIC DOCUMENTATION
EXTERIOR VIEWS



MERC-EXT-19

MISSOULA MERCANTILE PHOTOGRAPHIC DOCUMENTATION
EXTERIOR VIEWS



MERC-EXT-20



MERC-EXT-21

MISSOULA MERCANTILE PHOTOGRAPHIC DOCUMENTATION
EXTERIOR VIEWS



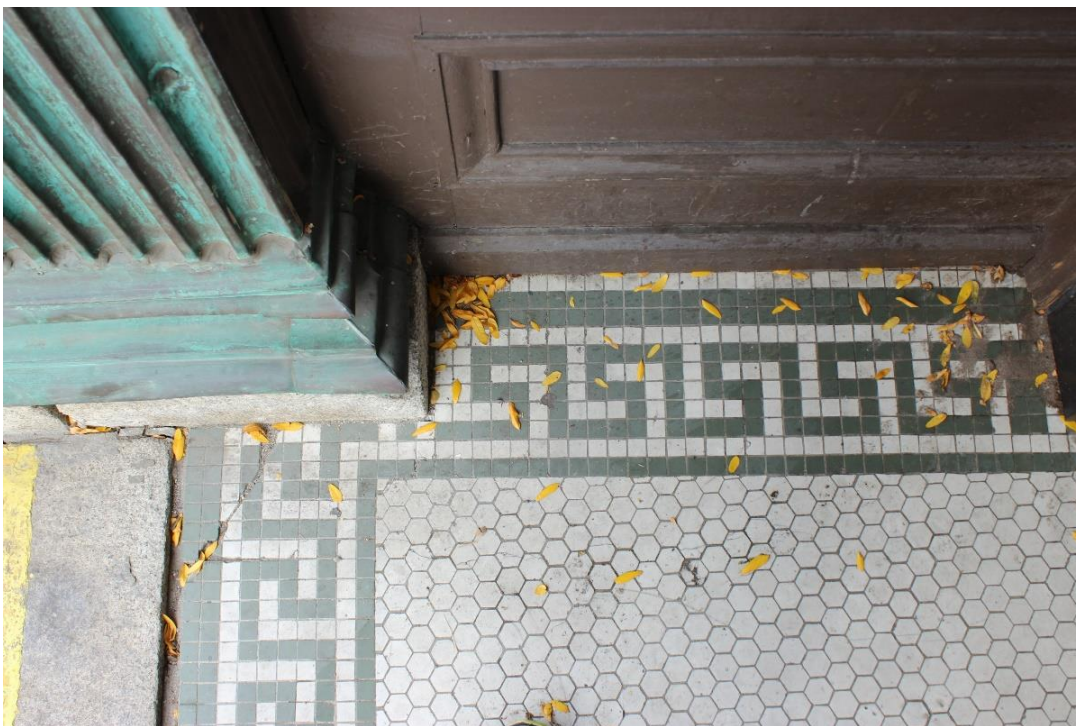
MERC-EXT-22

MISSOULA MERCANTILE PHOTOGRAPHIC DOCUMENTATION
EXTERIOR VIEWS



MERC-EXT-23

MISSOULA MERCANTILE PHOTOGRAPHIC DOCUMENTATION
EXTERIOR VIEWS



MERC-EXT-24

MISSOULA MERCANTILE PHOTOGRAPHIC DOCUMENTATION
EXTERIOR VIEWS



MERC-EXT-25

MISSOULA MERCANTILE PHOTOGRAPHIC DOCUMENTATION
EXTERIOR VIEWS



MERC-EXT-26

MISSOULA MERCANTILE PHOTOGRAPHIC DOCUMENTATION
EXTERIOR VIEWS



MERC-EXT-27

MISSOULA MERCANTILE PHOTOGRAPHIC DOCUMENTATION
EXTERIOR VIEWS



MERC-EXT-28

MISSOULA MERCANTILE PHOTOGRAPHIC DOCUMENTATION
EXTERIOR VIEWS

MERC-EXT-29

(ROUND COLUMN AT PHARMACY)
MERC-EXT-30

MISSOULA MERCANTILE PHOTOGRAPHIC DOCUMENTATION
EXTERIOR VIEWS



MERC-EXT-31



MERC-EXT-32

MISSOULA MERCANTILE PHOTOGRAPHIC DOCUMENTATION
EXTERIOR VIEWS



MERC-EXT-33

MISSOULA MERCANTILE PHOTOGRAPHIC DOCUMENTATION
EXTERIOR VIEWS



MERC-EXT-34

MISSOULA MERCANTILE PHOTOGRAPHIC DOCUMENTATION
EXTERIOR VIEWS



MERC-EXT-35

MISSOULA MERCANTILE PHOTOGRAPHIC DOCUMENTATION
EXTERIOR VIEWS



MERC-EXT-36



MERC-EXT-37

MISSOULA MERCANTILE PHOTOGRAPHIC DOCUMENTATION
EXTERIOR VIEWS



MERC-EXT-38



MERC-EXT-39

MISSOULA MERCANTILE PHOTOGRAPHIC DOCUMENTATION
EXTERIOR VIEWS



MERC-EXT-40



MERC-EXT-41

MISSOULA MERCANTILE PHOTOGRAPHIC DOCUMENTATION
EXTERIOR VIEWS



MERC-EXT-42



MERC-EXT-43

MISSOULA MERCANTILE PHOTOGRAPHIC DOCUMENTATION
EXTERIOR VIEWS



MERC-EXT-44

MISSOULA MERCANTILE PHOTOGRAPHIC DOCUMENTATION
EXTERIOR VIEWS



MERC-EXT-45



MERC-EXT-46

MISSOULA MERCANTILE PHOTOGRAPHIC DOCUMENTATION
EXTERIOR VIEWS

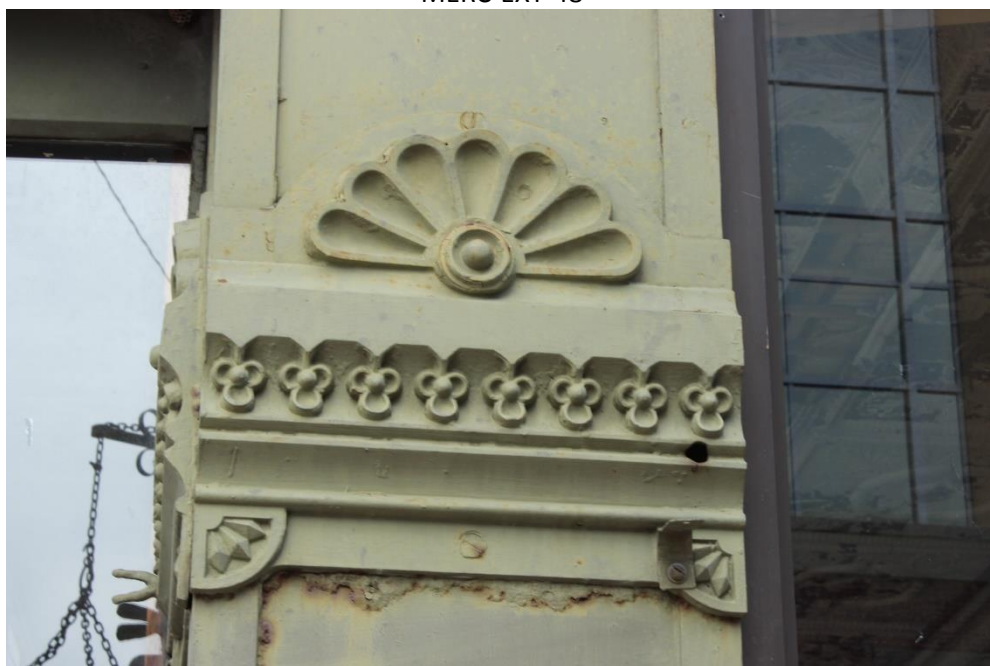


MERC-EXT-47

MISSOULA MERCANTILE PHOTOGRAPHIC DOCUMENTATION
EXTERIOR VIEWS



MERC-EXT-48



MERC-EXT-49

MISSOULA MERCANTILE PHOTOGRAPHIC DOCUMENTATION
EXTERIOR VIEWS



MERC-EXT-50

MISSOULA MERCANTILE PHOTOGRAPHIC DOCUMENTATION
EXTERIOR VIEWS



MERC-EXT-51

MISSOULA MERCANTILE PHOTOGRAPHIC DOCUMENTATION
EXTERIOR VIEWS



MERC-EXT-52

MISSOULA MERCANTILE PHOTOGRAPHIC DOCUMENTATION
EXTERIOR VIEWS



MERC-EXT-53

MISSOULA MERCANTILE PHOTOGRAPHIC DOCUMENTATION
EXTERIOR VIEWS



MERC-EXT-54

MISSOULA MERCANTILE PHOTOGRAPHIC DOCUMENTATION
EXTERIOR VIEWS



MERC-EXT-55

MISSOULA MERCANTILE PHOTOGRAPHIC DOCUMENTATION
EXTERIOR VIEWS



MERC-EXT-56

MISSOULA MERCANTILE PHOTOGRAPHIC DOCUMENTATION
EXTERIOR VIEWS



MERC-EXT-57

MISSOULA MERCANTILE PHOTOGRAPHIC DOCUMENTATION
EXTERIOR VIEWS



MERC-EXT-58

MISSOULA MERCANTILE PHOTOGRAPHIC DOCUMENTATION
EXTERIOR VIEWS



MERC-EXT-59

MISSOULA MERCANTILE PHOTOGRAPHIC DOCUMENTATION
EXTERIOR VIEWS

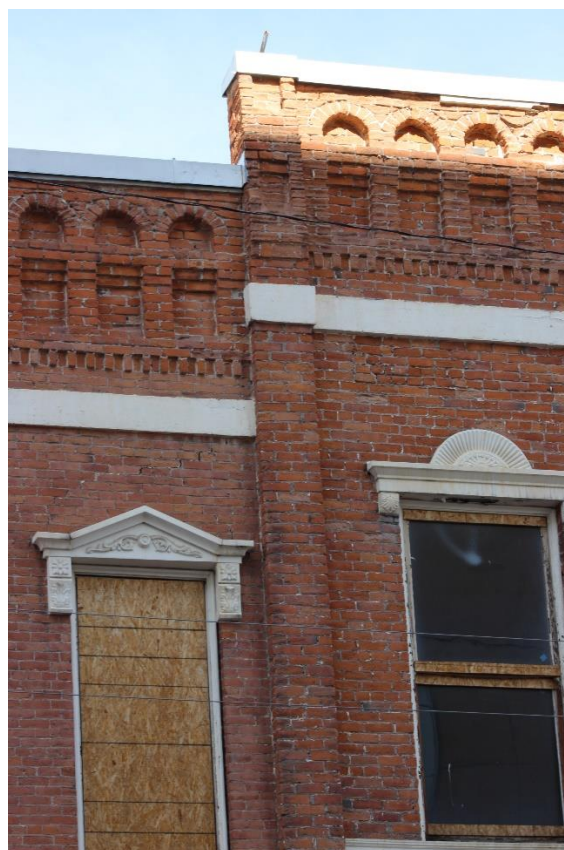


MERC-EXT-60

MISSOULA MERCANTILE PHOTOGRAPHIC DOCUMENTATION
EXTERIOR VIEWS

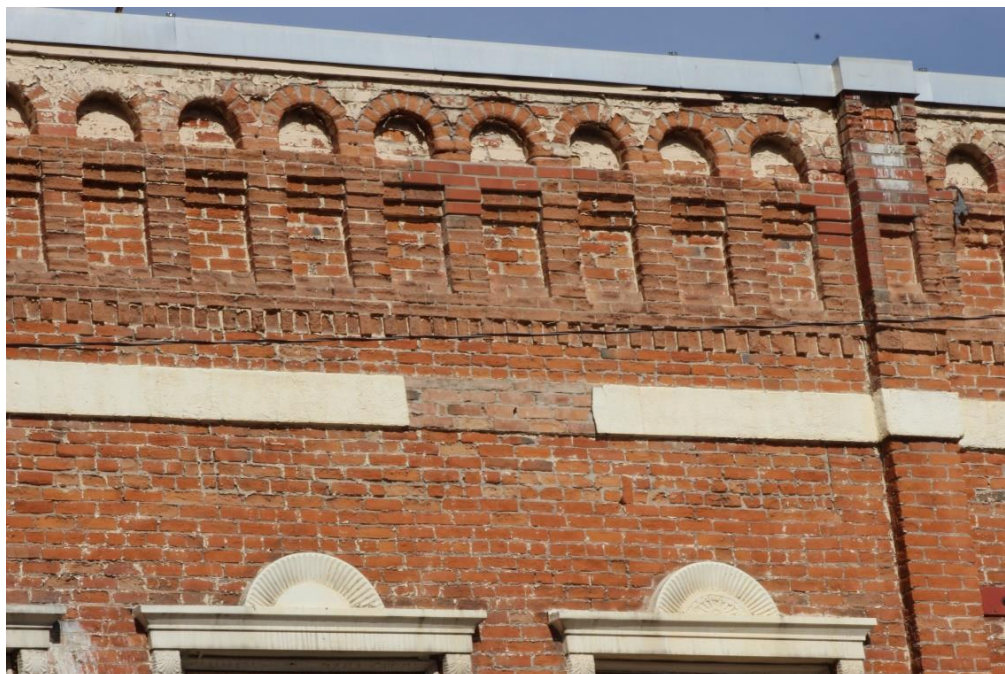


MERC-EXT-61



MERC-EXT-62

MISSOULA MERCANTILE PHOTOGRAPHIC DOCUMENTATION
EXTERIOR VIEWS



MERC-EXT-63



MERC-EXT-64

MISSOULA MERCANTILE PHOTOGRAPHIC DOCUMENTATION
EXTERIOR VIEWS



MERC-EXT-65



MERC-EXT-66

MISSOULA MERCANTILE PHOTOGRAPHIC DOCUMENTATION
EXTERIOR VIEWS



MERC-EXT-67



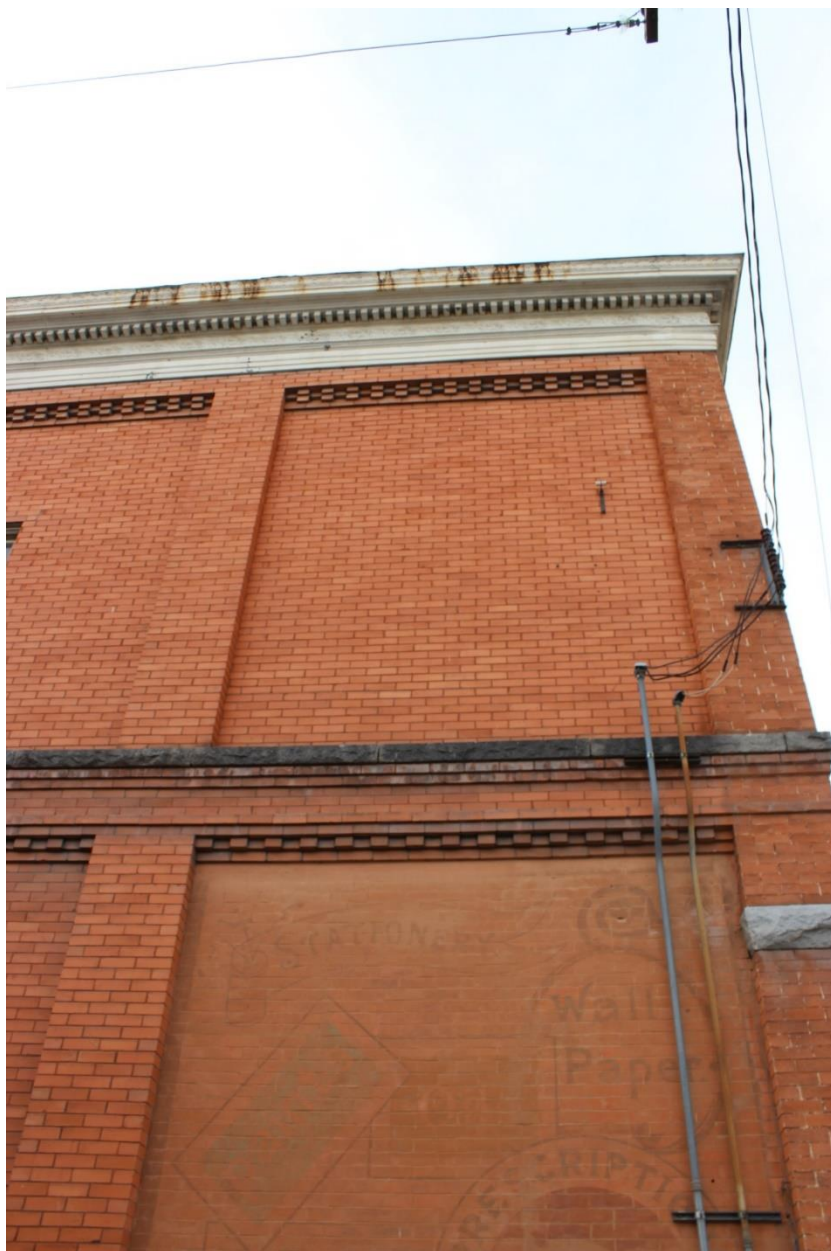
MERC-EXT-68

MISSOULA MERCANTILE PHOTOGRAPHIC DOCUMENTATION
EXTERIOR VIEWS



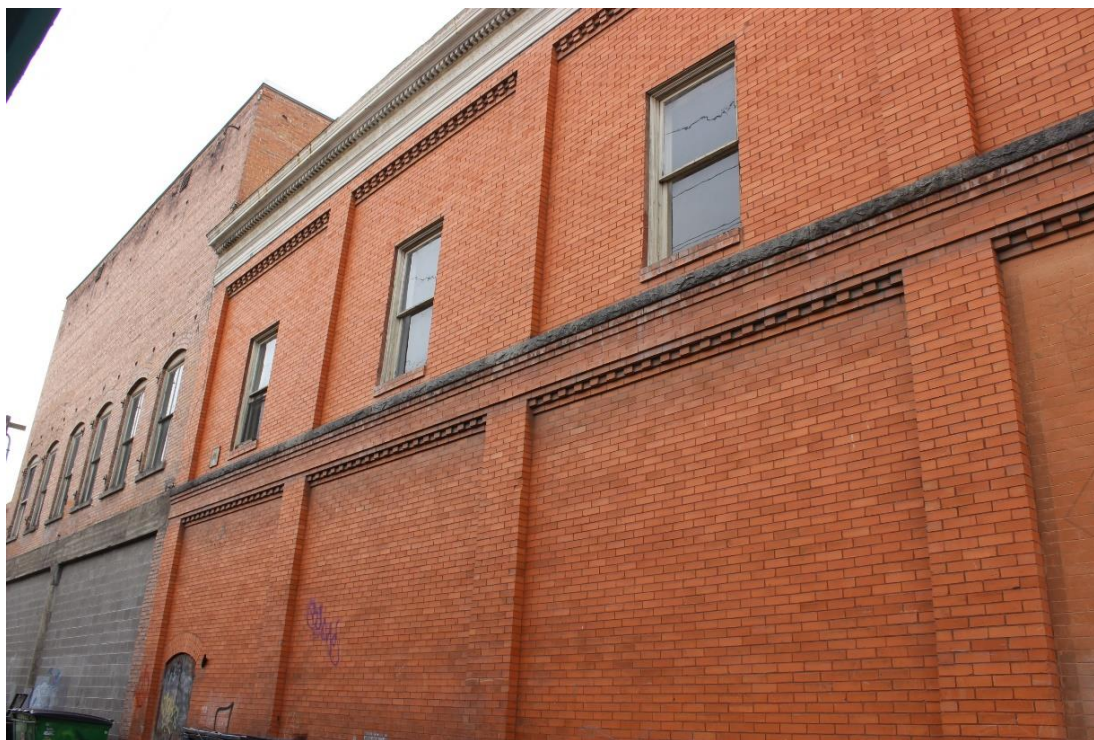
MERC-EXT-69

MISSOULA MERCANTILE PHOTOGRAPHIC DOCUMENTATION
EXTERIOR VIEWS



MERC-EXT-70

MISSOULA MERCANTILE PHOTOGRAPHIC DOCUMENTATION
EXTERIOR VIEWS



MERC-EXT-71

MISSOULA MERCANTILE PHOTOGRAPHIC DOCUMENTATION
EXTERIOR VIEWS



MERC-EXT-72

MISSOULA MERCANTILE PHOTOGRAPHIC DOCUMENTATION
EXTERIOR VIEWS



MERC-EXT-73

MISSOULA MERCANTILE PHOTOGRAPHIC DOCUMENTATION
EXTERIOR VIEWS



MERC-EXT-74

MISSOULA MERCANTILE PHOTOGRAPHIC DOCUMENTATION
EXTERIOR VIEWS



MERC-EXT-75



MERC-EXT-76

MISSOULA MERCANTILE PHOTOGRAPHIC DOCUMENTATION
EXTERIOR VIEWS



MERC-EXT-77



MERC-EXT-78

MISSOULA MERCANTILE PHOTOGRAPHIC DOCUMENTATION
EXTERIOR VIEWS



MERC-EXT-79

MISSOULA MERCANTILE PHOTOGRAPHIC DOCUMENTATION
EXTERIOR VIEWS

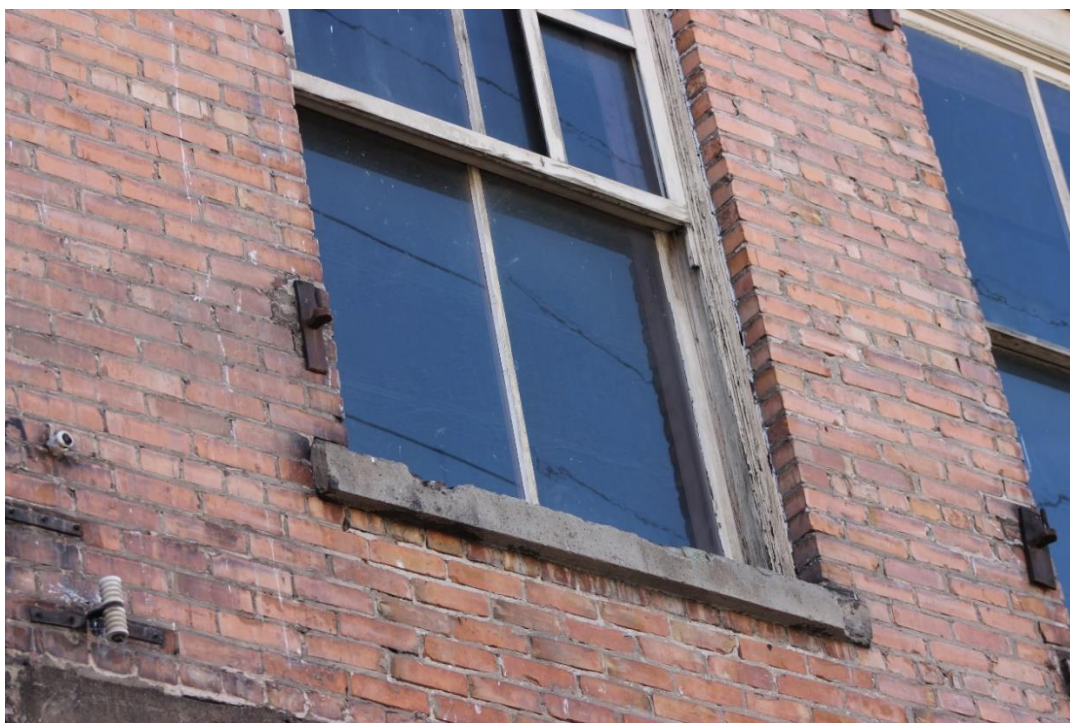


MERC-EXT-80

MISSOULA MERCANTILE PHOTOGRAPHIC DOCUMENTATION
EXTERIOR VIEWS



MERC-EXT-81



MERC-EXT-82

MISSOULA MERCANTILE PHOTOGRAPHIC DOCUMENTATION
EXTERIOR VIEWS



MERC-EXT-83

MISSOULA MERCANTILE PHOTOGRAPHIC DOCUMENTATION
EXTERIOR VIEWS



MERC-EXT-84

MISSOULA MERCANTILE PHOTOGRAPHIC DOCUMENTATION
EXTERIOR VIEWS



MERC-EXT-85



MERC-EXT-86

MISSOULA MERCANTILE PHOTOGRAPHIC DOCUMENTATION
EXTERIOR VIEWS



MERC-EXT-87

MISSOULA MERCANTILE PHOTOGRAPHIC DOCUMENTATION
EXTERIOR VIEWS



MERC-EXT-88

MISSOULA MERCANTILE PHOTOGRAPHIC DOCUMENTATION
EXTERIOR VIEWS



MERC-EXT-89

MISSOULA MERCANTILE PHOTOGRAPHIC DOCUMENTATION
EXTERIOR VIEWS

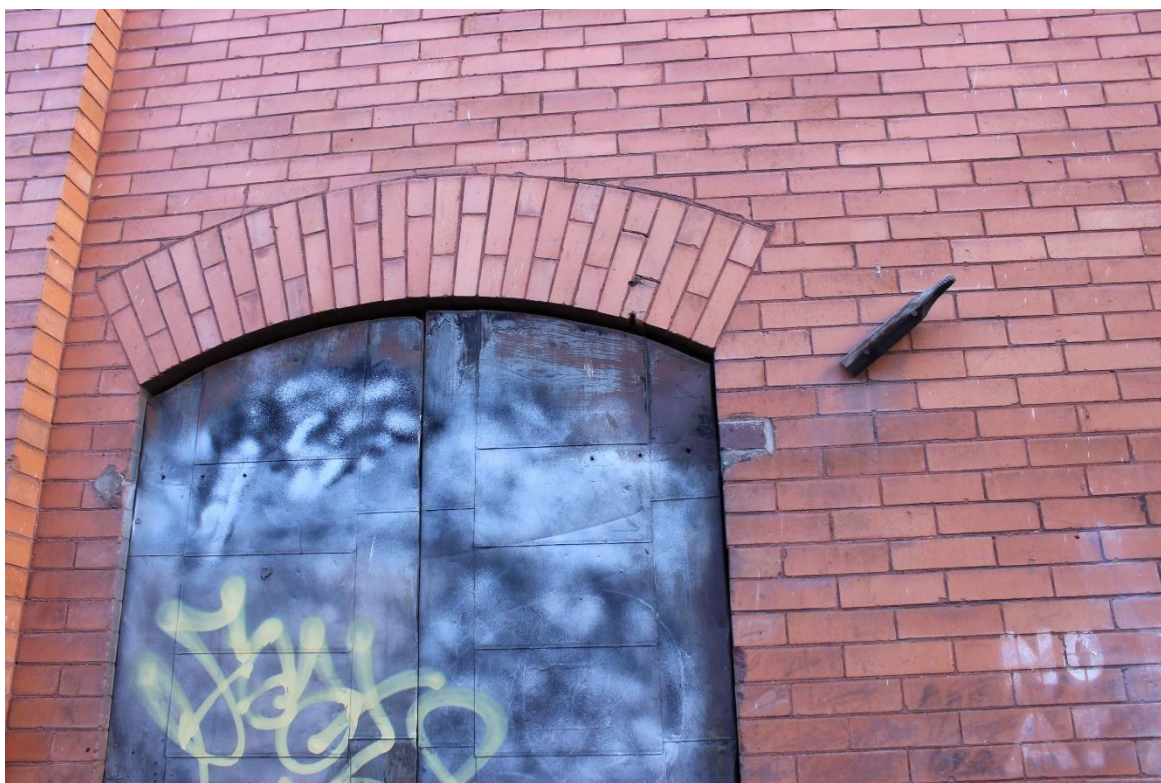


MERC-EXT-90

MISSOULA MERCANTILE PHOTOGRAPHIC DOCUMENTATION
EXTERIOR VIEWS



MERC-EXT-91



MERC-EXT-92

MISSOULA MERCANTILE PHOTOGRAPHIC DOCUMENTATION
EXTERIOR VIEWS



MERC-EXT-93



MERC-EXT-94

MISSOULA MERCANTILE PHOTOGRAPHIC DOCUMENTATION
EXTERIOR VIEWS



MERC-EXT-95

MISSOULA MERCANTILE PHOTOGRAPHIC DOCUMENTATION
INTERIOR VIEWS



MERC-INT-1



MERC-INT-2

MISSOULA MERCANTILE PHOTOGRAPHIC DOCUMENTATION
INTERIOR VIEWS



MERC-INT-3



MERC-INT-4

MISSOULA MERCANTILE PHOTOGRAPHIC DOCUMENTATION
INTERIOR VIEWS



MERC-INT-5



MERC-INT-6

MISSOULA MERCANTILE PHOTOGRAPHIC DOCUMENTATION
INTERIOR VIEWS



MERC-INT-7

MISSOULA MERCANTILE PHOTOGRAPHIC DOCUMENTATION
INTERIOR VIEWS



MERC-INT-8



MERC-INT-9

MISSOULA MERCANTILE PHOTOGRAPHIC DOCUMENTATION
INTERIOR VIEWS



MERC-INT-10

MISSOULA MERCANTILE PHOTOGRAPHIC DOCUMENTATION
INTERIOR VIEWS



MERC-INT-11

MISSOULA MERCANTILE PHOTOGRAPHIC DOCUMENTATION
INTERIOR VIEWS



MERC-INT-12

MISSOULA MERCANTILE PHOTOGRAPHIC DOCUMENTATION
INTERIOR VIEWS



MERC-INT-13

MISSOULA MERCANTILE PHOTOGRAPHIC DOCUMENTATION
INTERIOR VIEWS



MERC-INT-14

MISSOULA MERCANTILE PHOTOGRAPHIC DOCUMENTATION
INTERIOR VIEWS



MERC-INT-15

MISSOULA MERCANTILE PHOTOGRAPHIC DOCUMENTATION
INTERIOR VIEWS



MERC-INT-16

MISSOULA MERCANTILE PHOTOGRAPHIC DOCUMENTATION
INTERIOR VIEWS



MERC-INT-17

MISSOULA MERCANTILE PHOTOGRAPHIC DOCUMENTATION
INTERIOR VIEWS



MERC-INT-18

MISSOULA MERCANTILE PHOTOGRAPHIC DOCUMENTATION
INTERIOR VIEWS



MERC-INT-19

MISSOULA MERCANTILE PHOTOGRAPHIC DOCUMENTATION
INTERIOR VIEWS

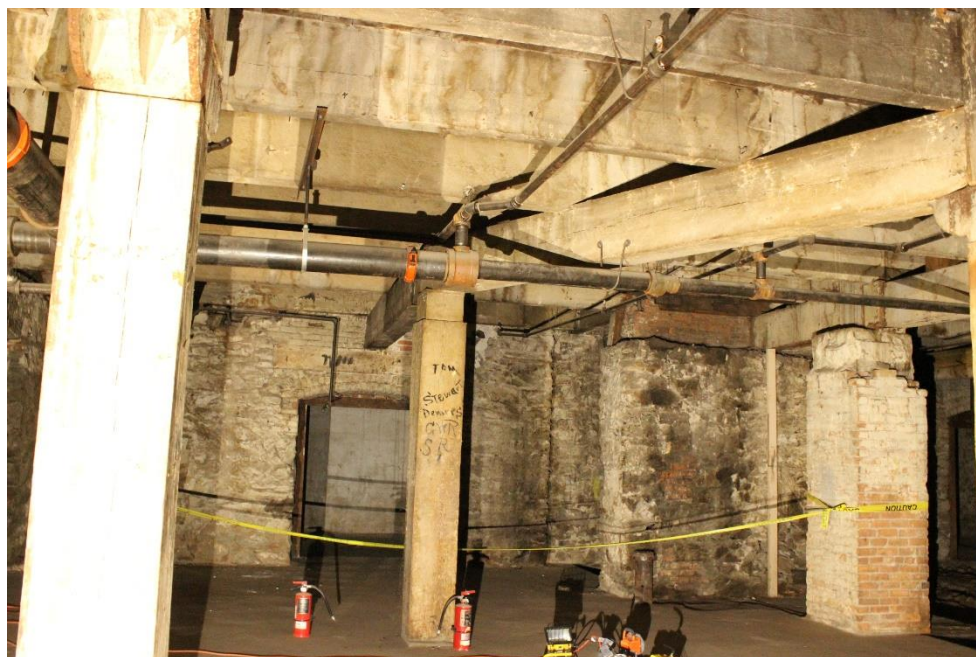


MERC-INT-20



MERC-INT-21

MISSOULA MERCANTILE PHOTOGRAPHIC DOCUMENTATION
INTERIOR VIEWS



MERC-INT-22



MERC-INT-23

MISSOULA MERCANTILE PHOTOGRAPHIC DOCUMENTATION
INTERIOR VIEWS



MERC-INT-24



MERC-INT-25

MISSOULA MERCANTILE PHOTOGRAPHIC DOCUMENTATION
INTERIOR VIEWS



MERC-INT-26

MISSOULA MERCANTILE PHOTOGRAPHIC DOCUMENTATION
INTERIOR VIEWS



MERC-INT-27

MISSOULA MERCANTILE PHOTOGRAPHIC DOCUMENTATION
INTERIOR VIEWS



MERC-INT-28

MISSOULA MERCANTILE PHOTOGRAPHIC DOCUMENTATION
INTERIOR VIEWS



MERC-INT-29

MISSOULA MERCANTILE PHOTOGRAPHIC DOCUMENTATION
INTERIOR VIEWS



MERC-INT-30

MISSOULA MERCANTILE PHOTOGRAPHIC DOCUMENTATION
INTERIOR VIEWS



MERC-INT-31

MISSOULA MERCANTILE PHOTOGRAPHIC DOCUMENTATION
INTERIOR VIEWS



MERC-INT-32



MERC-INT-33

MISSOULA MERCANTILE PHOTOGRAPHIC DOCUMENTATION
INTERIOR VIEWS



MERC-INT-34



MERC-INT-35

MISSOULA MERCANTILE PHOTOGRAPHIC DOCUMENTATION
INTERIOR VIEWS



MERC-INT-36

MISSOULA MERCANTILE PHOTOGRAPHIC DOCUMENTATION
INTERIOR VIEWS



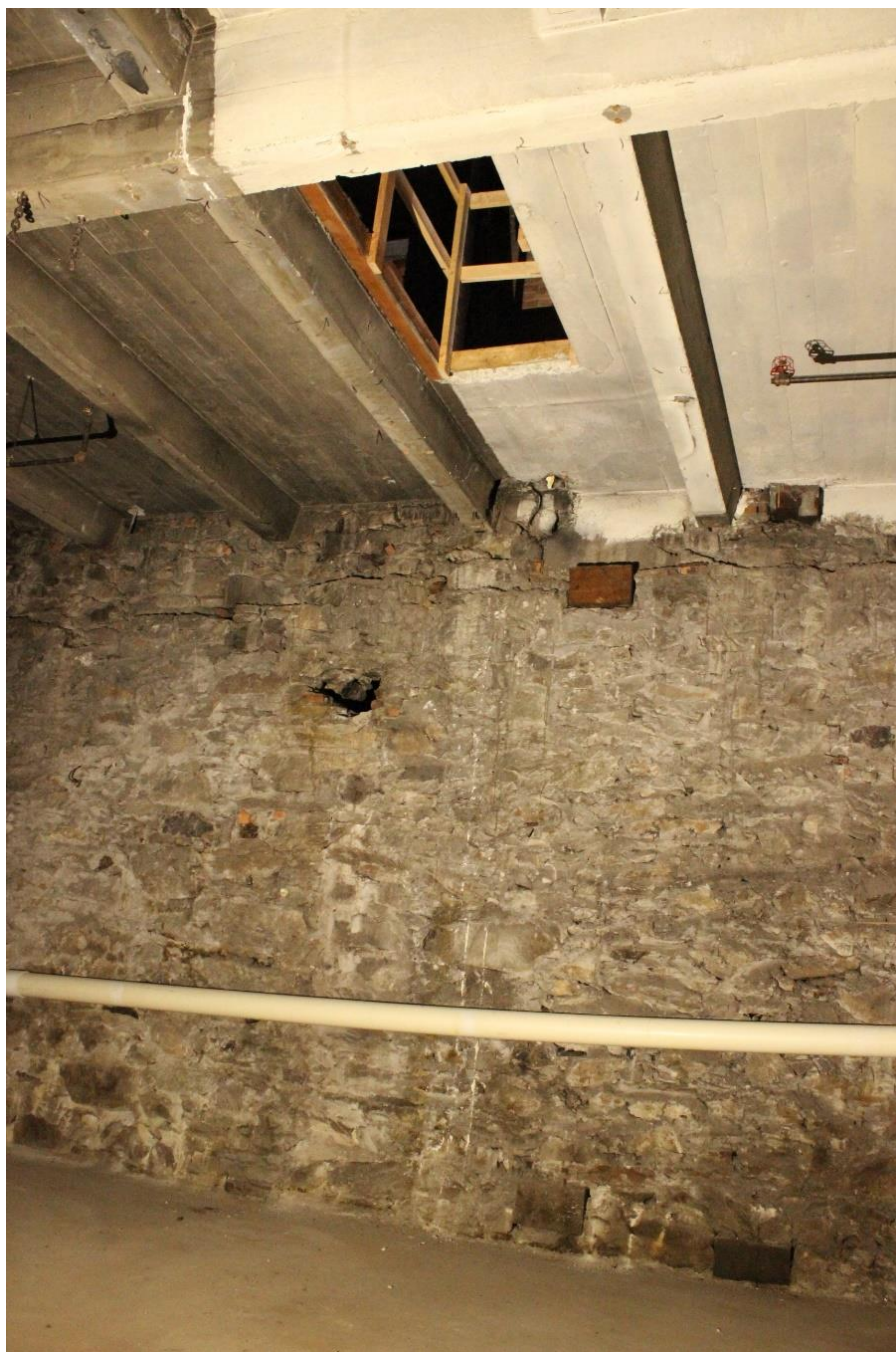
MERC-INT-37

MISSOULA MERCANTILE PHOTOGRAPHIC DOCUMENTATION
INTERIOR VIEWS



MERC-INT-38

MISSOULA MERCANTILE PHOTOGRAPHIC DOCUMENTATION
INTERIOR VIEWS



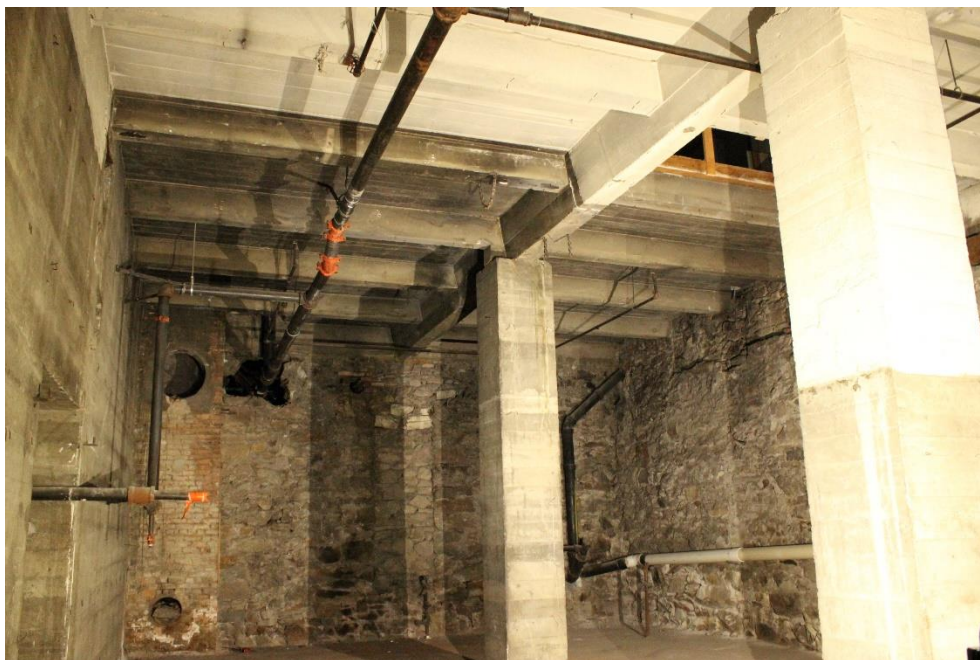
MERC-INT-39

MISSOULA MERCANTILE PHOTOGRAPHIC DOCUMENTATION
INTERIOR VIEWS



MERC-INT-40

MISSOULA MERCANTILE PHOTOGRAPHIC DOCUMENTATION
INTERIOR VIEWS



MERC-INT-41



MERC-INT-42

MISSOULA MERCANTILE PHOTOGRAPHIC DOCUMENTATION
INTERIOR VIEWS



MERC-INT-43

MISSOULA MERCANTILE PHOTOGRAPHIC DOCUMENTATION
INTERIOR VIEWS



MERC-INT-44



MERC-INT-45

MISSOULA MERCANTILE PHOTOGRAPHIC DOCUMENTATION
INTERIOR VIEWS



MERC-INT-46

MISSOULA MERCANTILE PHOTOGRAPHIC DOCUMENTATION
INTERIOR VIEWS



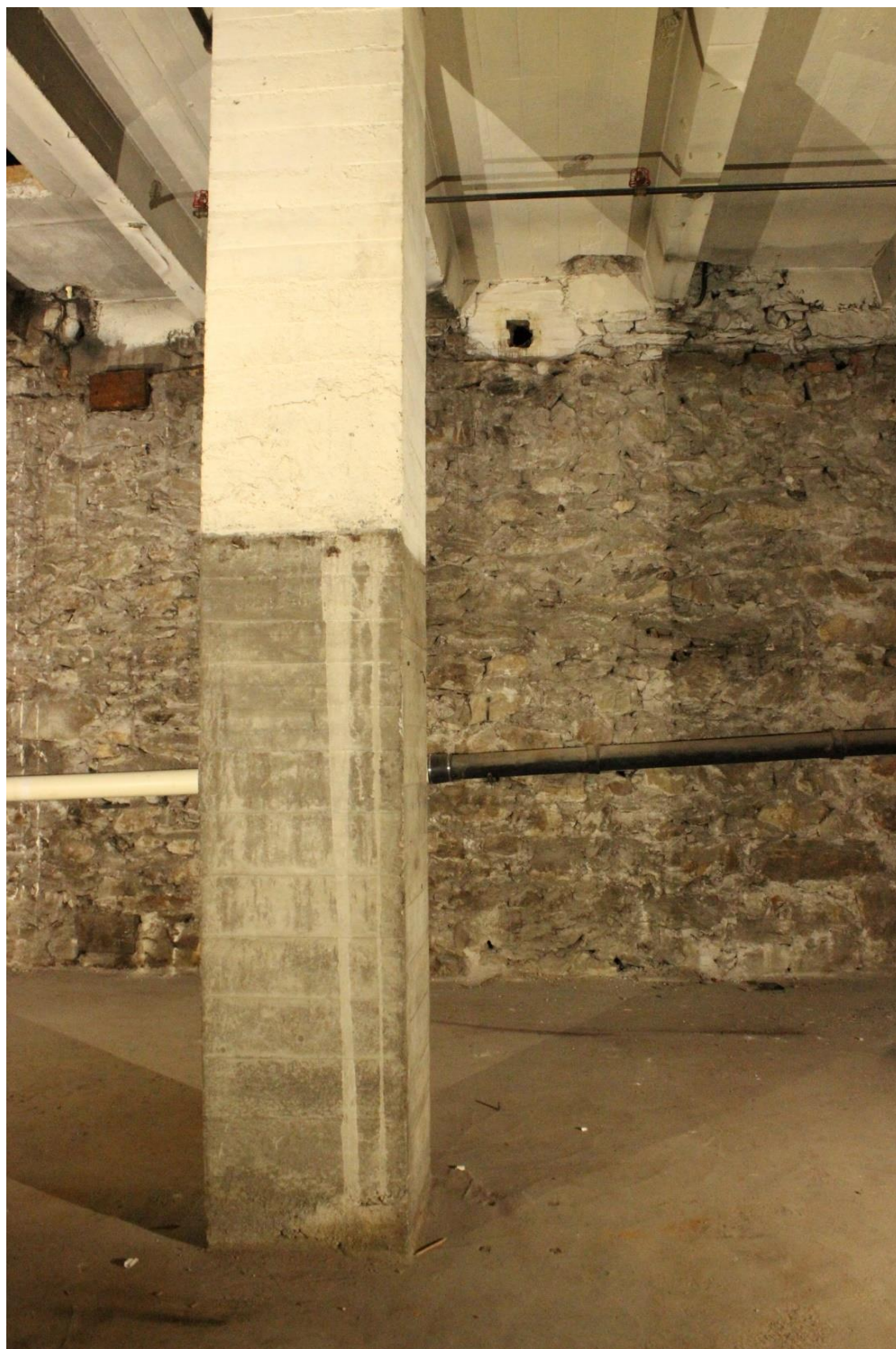
MERC-INT-47

MISSOULA MERCANTILE PHOTOGRAPHIC DOCUMENTATION
INTERIOR VIEWS



MERC-INT-48

MISSOULA MERCANTILE PHOTOGRAPHIC DOCUMENTATION
INTERIOR VIEWS



MERC-INT-49

MISSOULA MERCANTILE PHOTOGRAPHIC DOCUMENTATION
INTERIOR VIEWS



MERC-INT-50

MISSOULA MERCANTILE PHOTOGRAPHIC DOCUMENTATION
INTERIOR VIEWS



MERC-INT-51

MISSOULA MERCANTILE PHOTOGRAPHIC DOCUMENTATION
INTERIOR VIEWS



MERC-INT-52

MISSOULA MERCANTILE PHOTOGRAPHIC DOCUMENTATION
INTERIOR VIEWS



MERC-INT-53

MISSOULA MERCANTILE PHOTOGRAPHIC DOCUMENTATION
INTERIOR VIEWS



MERC-INT-54

MISSOULA MERCANTILE PHOTOGRAPHIC DOCUMENTATION
INTERIOR VIEWS



MERC-INT-55



MERC-INT-56

MISSOULA MERCANTILE PHOTOGRAPHIC DOCUMENTATION
INTERIOR VIEWS



MERC-INT-57



MERC-INT-58

MISSOULA MERCANTILE PHOTOGRAPHIC DOCUMENTATION
INTERIOR VIEWS



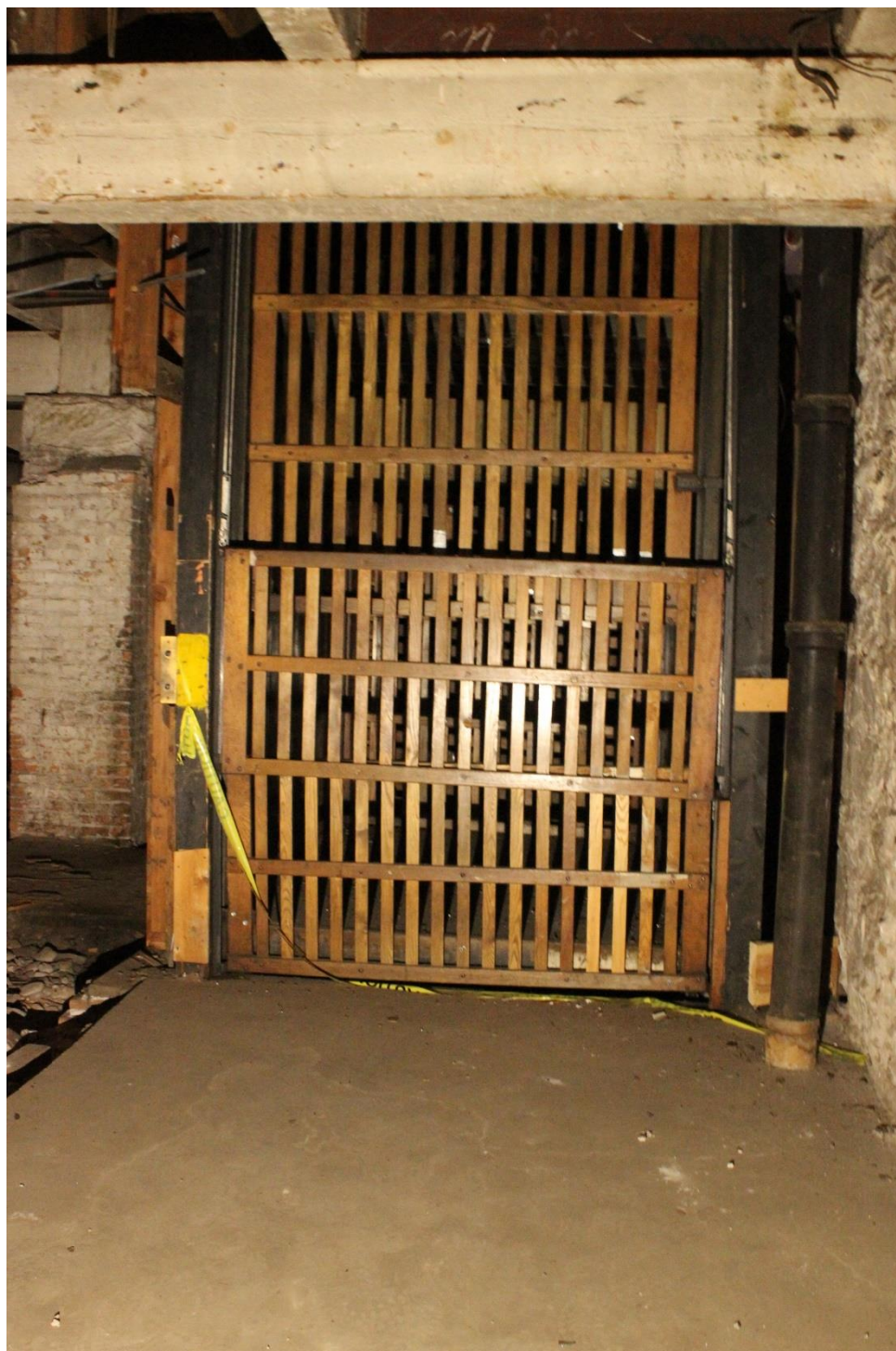
MERC-INT-59

MISSOULA MERCANTILE PHOTOGRAPHIC DOCUMENTATION
INTERIOR VIEWS



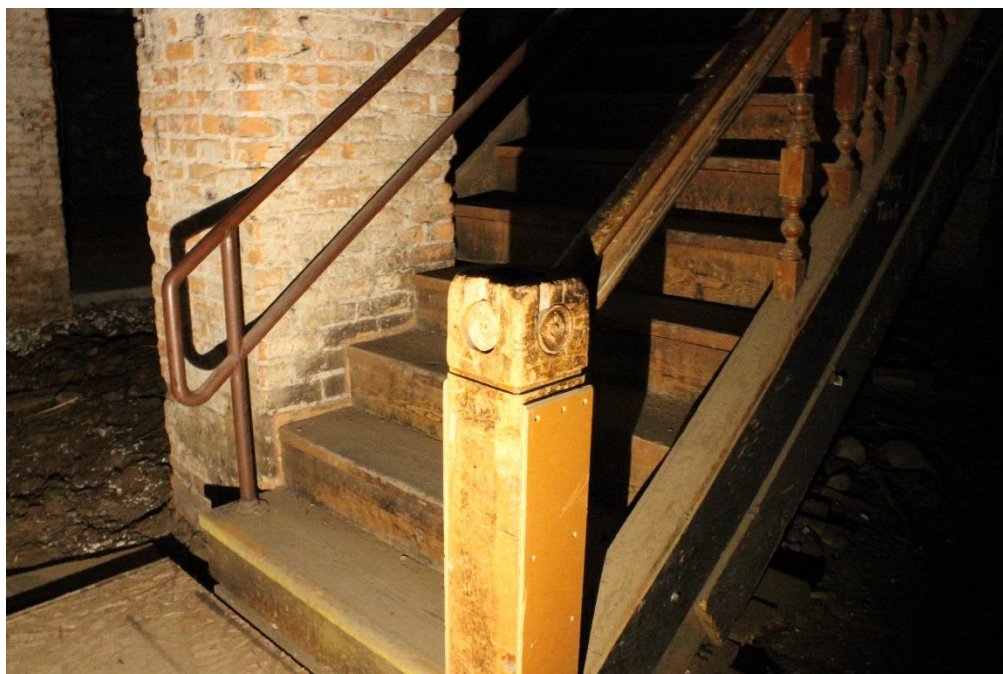
MERC-INT-60

MISSOULA MERCANTILE PHOTOGRAPHIC DOCUMENTATION
INTERIOR VIEWS



MERC-INT-61

MISSOULA MERCANTILE PHOTOGRAPHIC DOCUMENTATION
INTERIOR VIEWS



MERC-INT-62



MERC-INT-63

MISSOULA MERCANTILE PHOTOGRAPHIC DOCUMENTATION
INTERIOR VIEWS



MERC-INT-64

MISSOULA MERCANTILE PHOTOGRAPHIC DOCUMENTATION
INTERIOR VIEWS



MERC-INT-65

MISSOULA MERCANTILE PHOTOGRAPHIC DOCUMENTATION
INTERIOR VIEWS



MERC-INT-66

MISSOULA MERCANTILE PHOTOGRAPHIC DOCUMENTATION
INTERIOR VIEWS



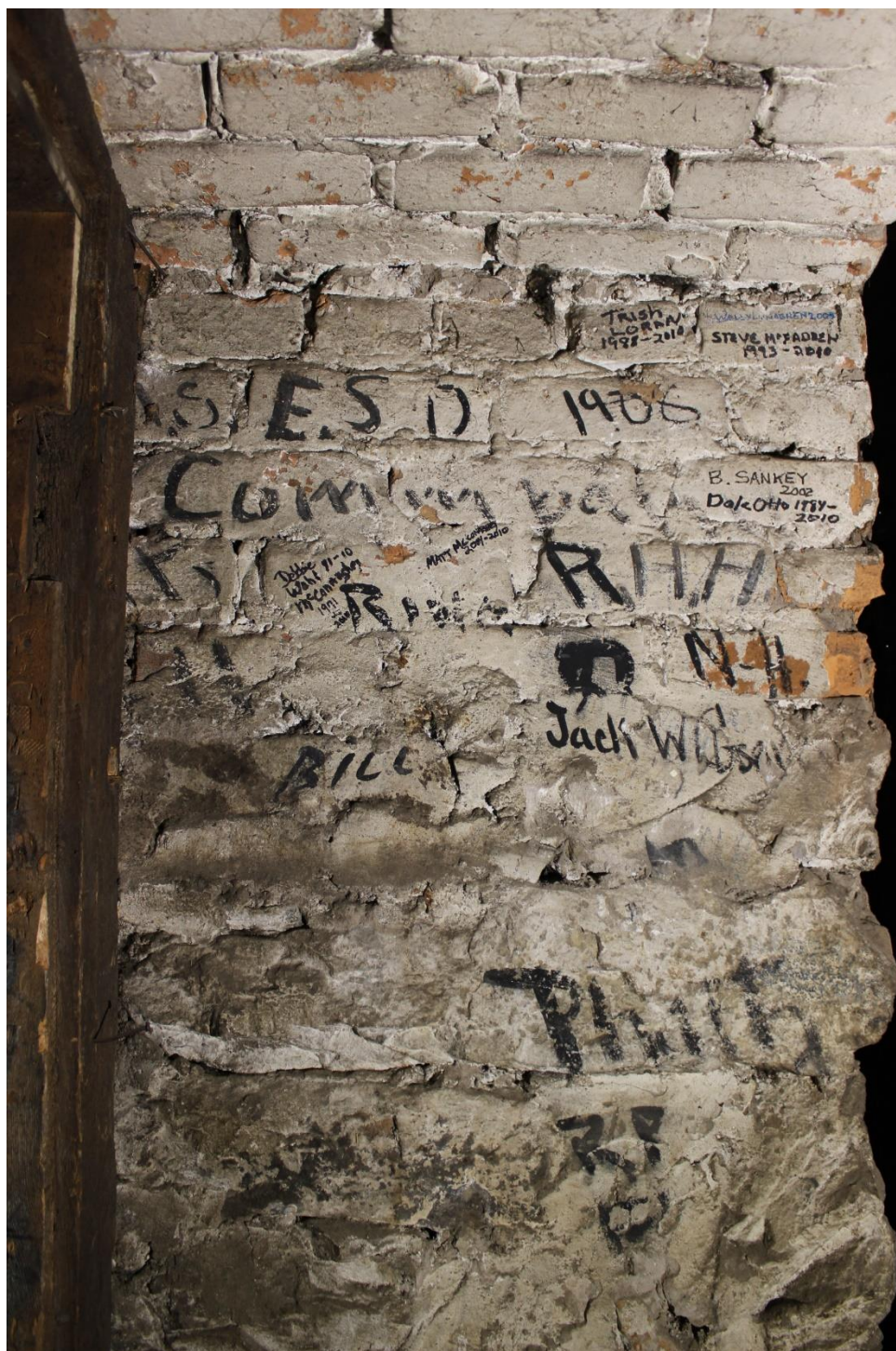
MERC-INT-67

MISSOULA MERCANTILE PHOTOGRAPHIC DOCUMENTATION
INTERIOR VIEWS



MERC-INT-68

MISSOULA MERCANTILE PHOTOGRAPHIC DOCUMENTATION
INTERIOR VIEWS



MERC-INT-69

Cable Elmer Haverd 2010

2000

1948

34

1800 1907 1908

1908 1911 1912

P.H.E. 1901

MERC-INT-70

MISSOULA MERCANTILE PHOTOGRAPHIC DOCUMENTATION
INTERIOR VIEWS

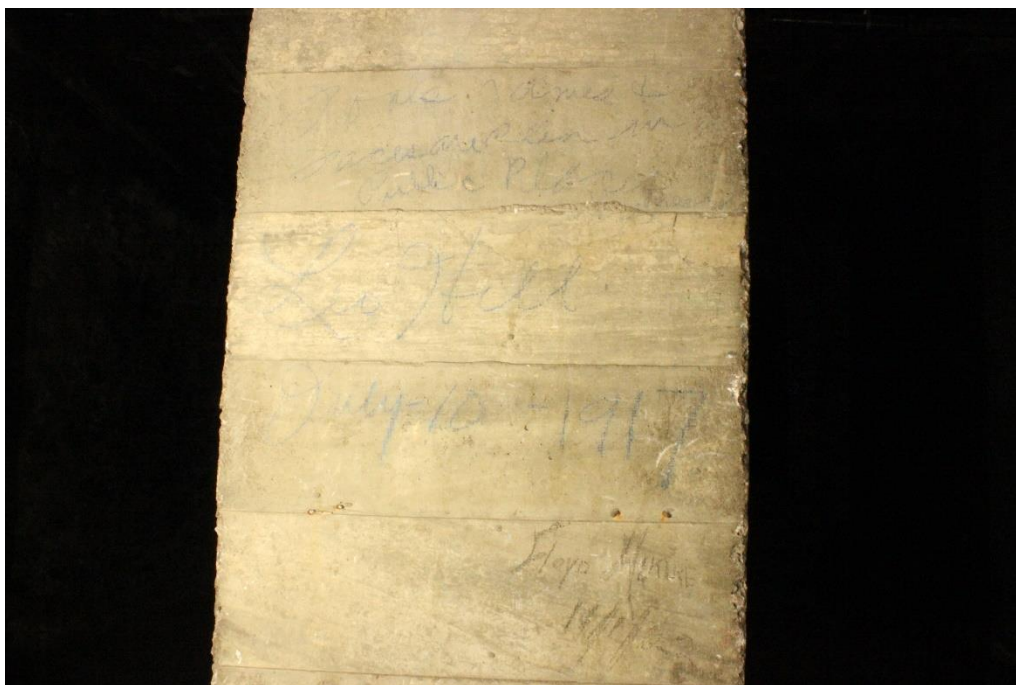


MERC-INT-71

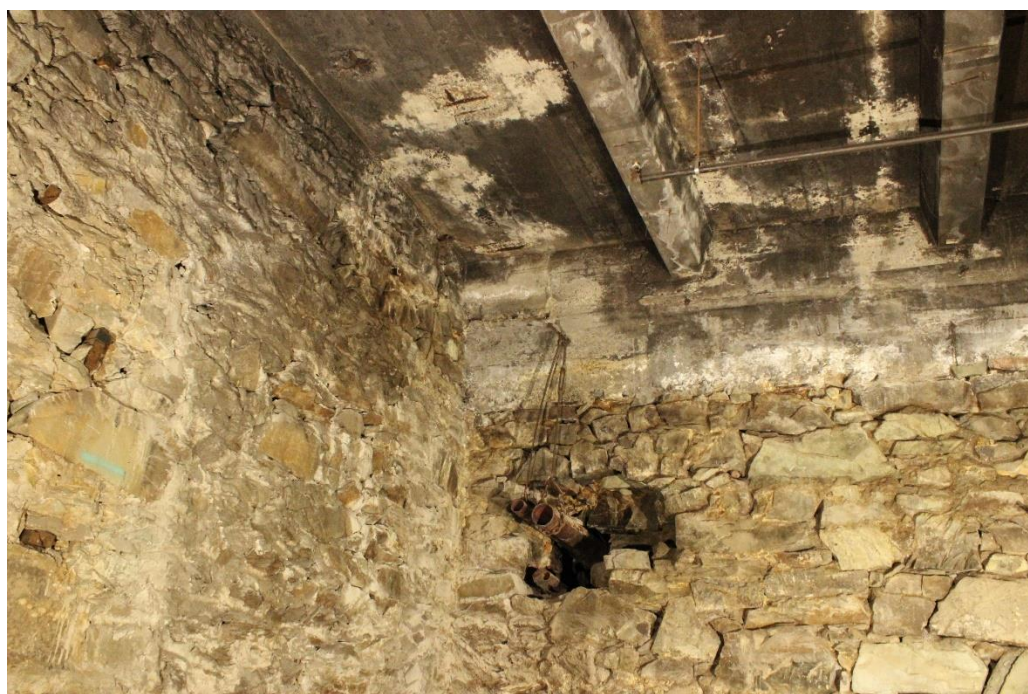
MISSOULA MERCANTILE PHOTOGRAPHIC DOCUMENTATION
INTERIOR VIEWS



MERC-INT-72

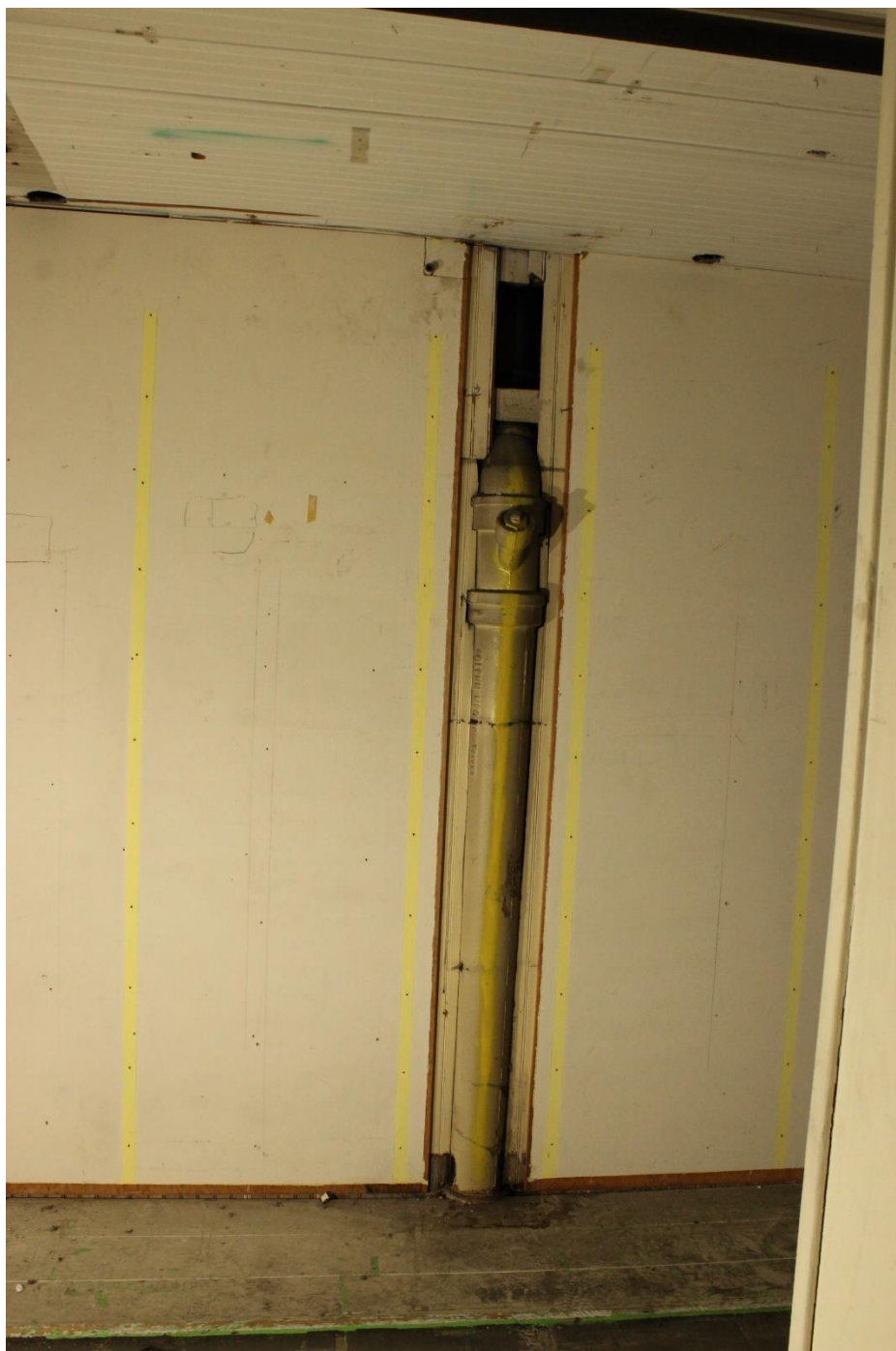
MISSOULA MERCANTILE PHOTOGRAPHIC DOCUMENTATION
INTERIOR VIEWS

MERC-INT-73



MERC-INT-74

MISSOULA MERCANTILE PHOTOGRAPHIC DOCUMENTATION
INTERIOR VIEWS



MERC-INT-75

MISSOULA MERCANTILE PHOTOGRAPHIC DOCUMENTATION
INTERIOR VIEWS



MERC-INT-76

MISSOULA MERCANTILE PHOTOGRAPHIC DOCUMENTATION
INTERIOR VIEWS



MERC-INT-77

MISSOULA MERCANTILE PHOTOGRAPHIC DOCUMENTATION
INTERIOR VIEWS



MERC-INT-78

MISSOULA MERCANTILE PHOTOGRAPHIC DOCUMENTATION
INTERIOR VIEWS



MERC-INT-79

The image shows a rectangular object, likely a book or a piece of paper, lying on a wooden surface. The object is covered in handwritten text and markings. The text is written in various colors (black, red, blue) and includes names like 'Dante', 'The Days of Vanishing', and 'The Days of Vanishing'. There are also some numbers and symbols. The object is secured with orange tape on the right side.

MERC-INT-80

MISSOULA MERCANTILE PHOTOGRAPHIC DOCUMENTATION
INTERIOR VIEWS



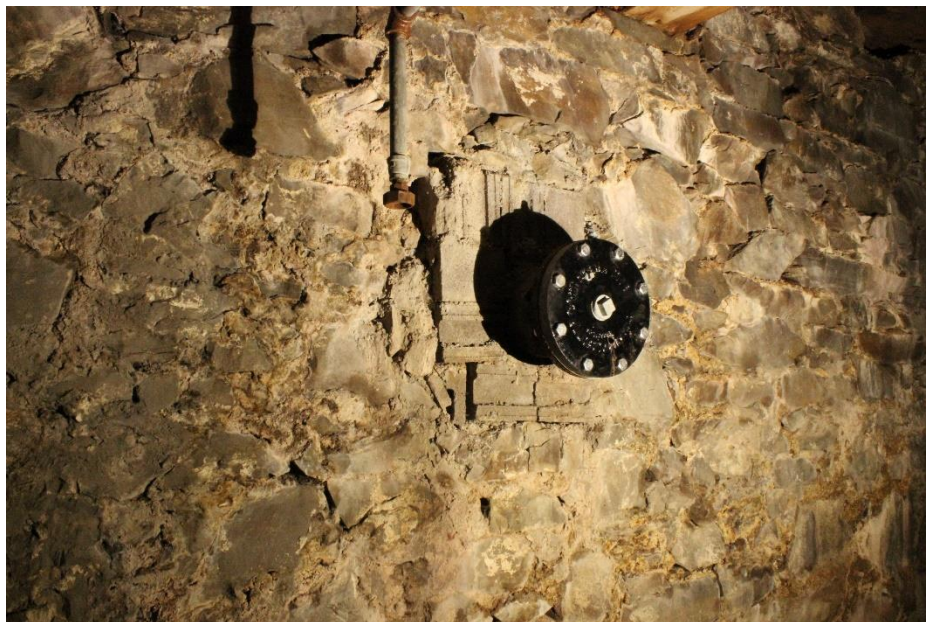
MERC-INT-81

MISSOULA MERCANTILE PHOTOGRAPHIC DOCUMENTATION
INTERIOR VIEWS



MERC-INT-82

MISSOULA MERCANTILE PHOTOGRAPHIC DOCUMENTATION
INTERIOR VIEWS



MERC-INT-83

MISSOULA MERCANTILE PHOTOGRAPHIC DOCUMENTATION
INTERIOR VIEWS



MERC-INT-84

MISSOULA MERCANTILE PHOTOGRAPHIC DOCUMENTATION
INTERIOR VIEWS



MERC-INT-85



MERC-INT-86

MISSOULA MERCANTILE PHOTOGRAPHIC DOCUMENTATION
INTERIOR VIEWS



MERC-INT-87



MERC-INT-88

MISSOULA MERCANTILE PHOTOGRAPHIC DOCUMENTATION
INTERIOR VIEWS



MERC-INT-89

MISSOULA MERCANTILE PHOTOGRAPHIC DOCUMENTATION
INTERIOR VIEWS



MERC-INT-90

MISSOULA MERCANTILE PHOTOGRAPHIC DOCUMENTATION
INTERIOR VIEWS



MERC-INT-91

MISSOULA MERCANTILE PHOTOGRAPHIC DOCUMENTATION
INTERIOR VIEWS



MERC-INT-92



MERC-INT-93

MISSOULA MERCANTILE PHOTOGRAPHIC DOCUMENTATION
INTERIOR VIEWS



MERC-INT-94

MISSOULA MERCANTILE PHOTOGRAPHIC DOCUMENTATION
INTERIOR VIEWS



MERC-INT-95

MISSOULA MERCANTILE PHOTOGRAPHIC DOCUMENTATION
INTERIOR VIEWS



MERC-INT-96

MISSOULA MERCANTILE PHOTOGRAPHIC DOCUMENTATION
INTERIOR VIEWS



MERC-INT-97

MISSOULA MERCANTILE PHOTOGRAPHIC DOCUMENTATION
INTERIOR VIEWS



MERC-INT-98



MERC-INT-99

MISSOULA MERCANTILE PHOTOGRAPHIC DOCUMENTATION
INTERIOR VIEWS



MERC-INT-100

MISSOULA MERCANTILE PHOTOGRAPHIC DOCUMENTATION
INTERIOR VIEWS



MERC-INT-101

MISSOULA MERCANTILE PHOTOGRAPHIC DOCUMENTATION
INTERIOR VIEWS



MERC-INT-102



MERC-INT-103

MISSOULA MERCANTILE PHOTOGRAPHIC DOCUMENTATION
INTERIOR VIEWS

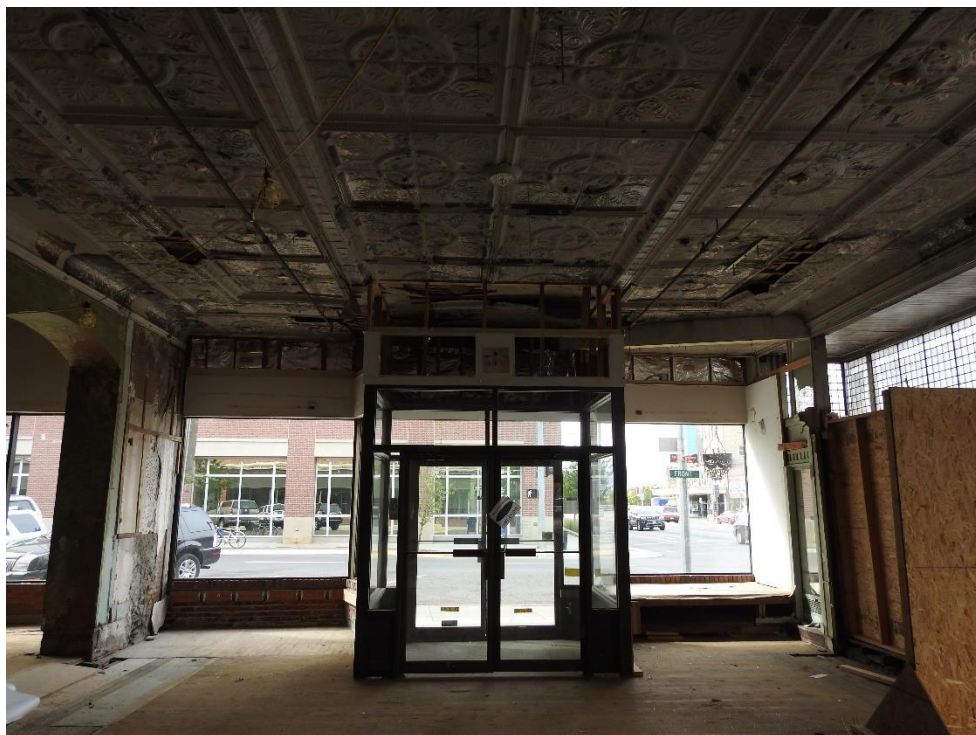


MERC-INT-104?



MERC-INT-105

MISSOULA MERCANTILE PHOTOGRAPHIC DOCUMENTATION
INTERIOR VIEWS



MERC-INT-106



MERC-INT-107

MISSOULA MERCANTILE PHOTOGRAPHIC DOCUMENTATION
INTERIOR VIEWS

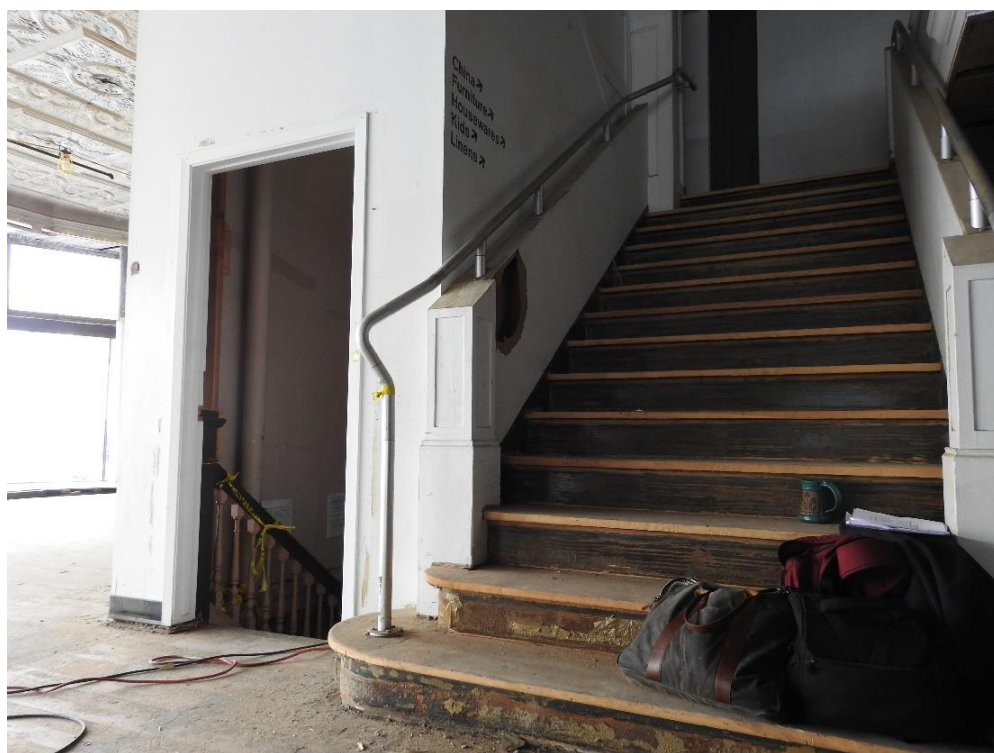


MERC-INT-108

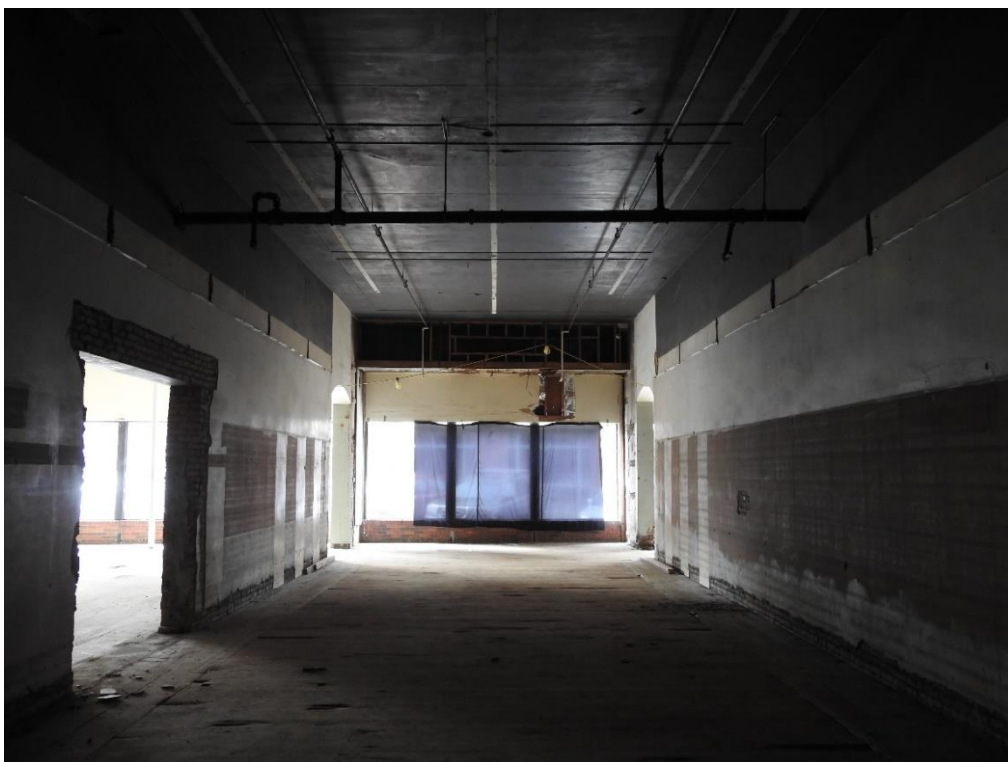


MERC-INT-109

MISSOULA MERCANTILE PHOTOGRAPHIC DOCUMENTATION
INTERIOR VIEWS



MERC-INT-110



MERC-INT-111

MISSOULA MERCANTILE PHOTOGRAPHIC DOCUMENTATION
INTERIOR VIEWS



MERC-INT-112

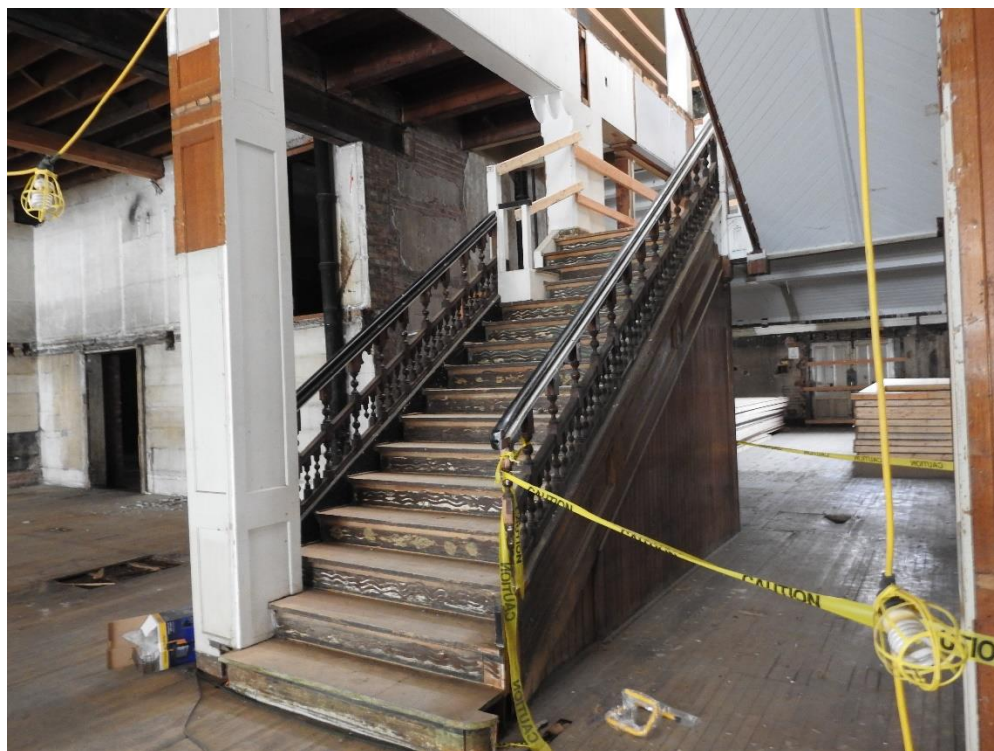


MERC-INT-113

MISSOULA MERCANTILE PHOTOGRAPHIC DOCUMENTATION
INTERIOR VIEWS



MERC-INT-114

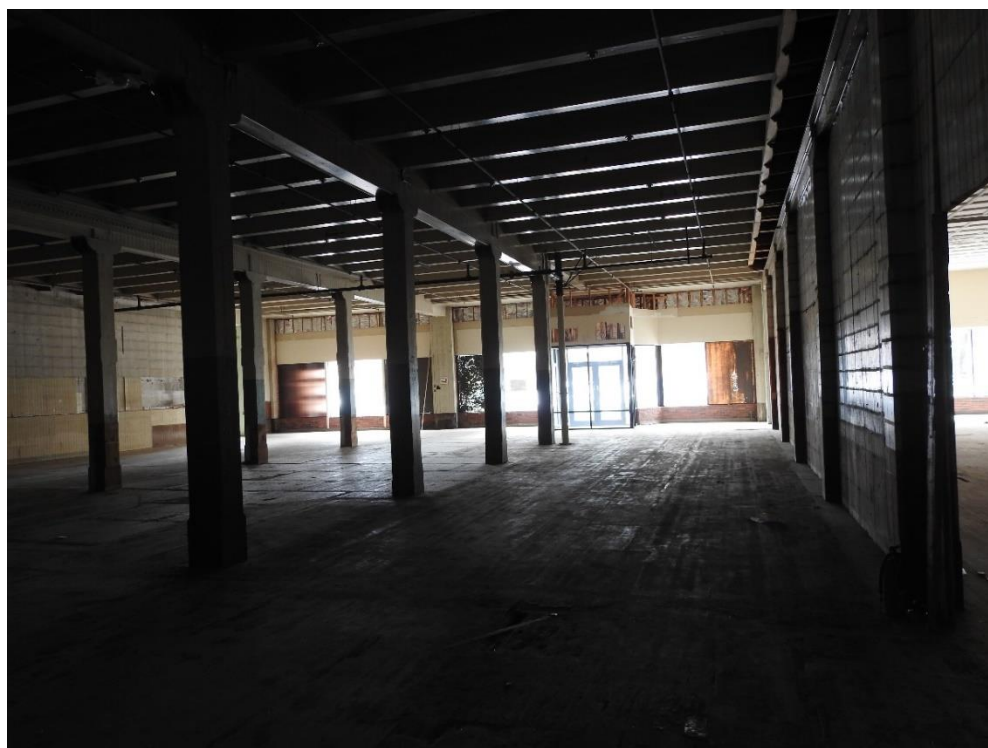


MERC-INT-115

MISSOULA MERCANTILE PHOTOGRAPHIC DOCUMENTATION
INTERIOR VIEWS



MERC-INT-116



MERC-INT-117

MISSOULA MERCANTILE PHOTOGRAPHIC DOCUMENTATION
INTERIOR VIEWS



MERC-INT-118



MERC-INT-119

MISSOULA MERCANTILE PHOTOGRAPHIC DOCUMENTATION
INTERIOR VIEWS



MERC-INT-120



MERC-INT-121

MISSOULA MERCANTILE PHOTOGRAPHIC DOCUMENTATION
INTERIOR VIEWS



MERC-INT-122

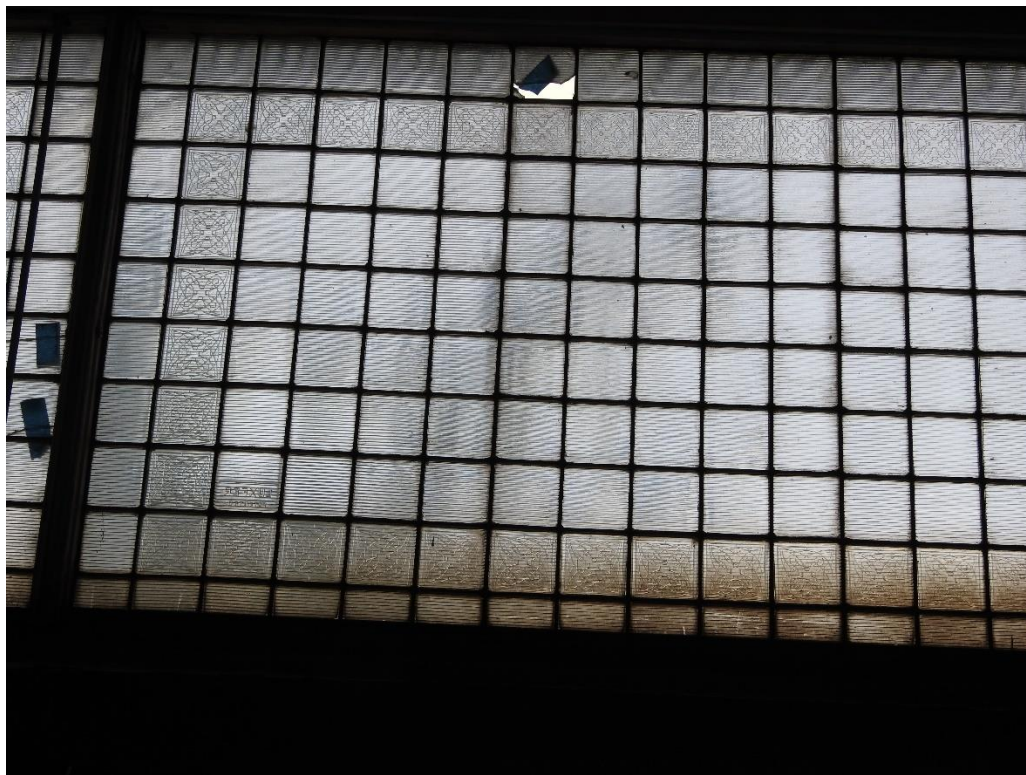


MERC-INT-123

MISSOULA MERCANTILE PHOTOGRAPHIC DOCUMENTATION
INTERIOR VIEWS



MERC-INT-124



MERC-INT-125

MISSOULA MERCANTILE PHOTOGRAPHIC DOCUMENTATION
INTERIOR VIEWS



MERC-INT-126

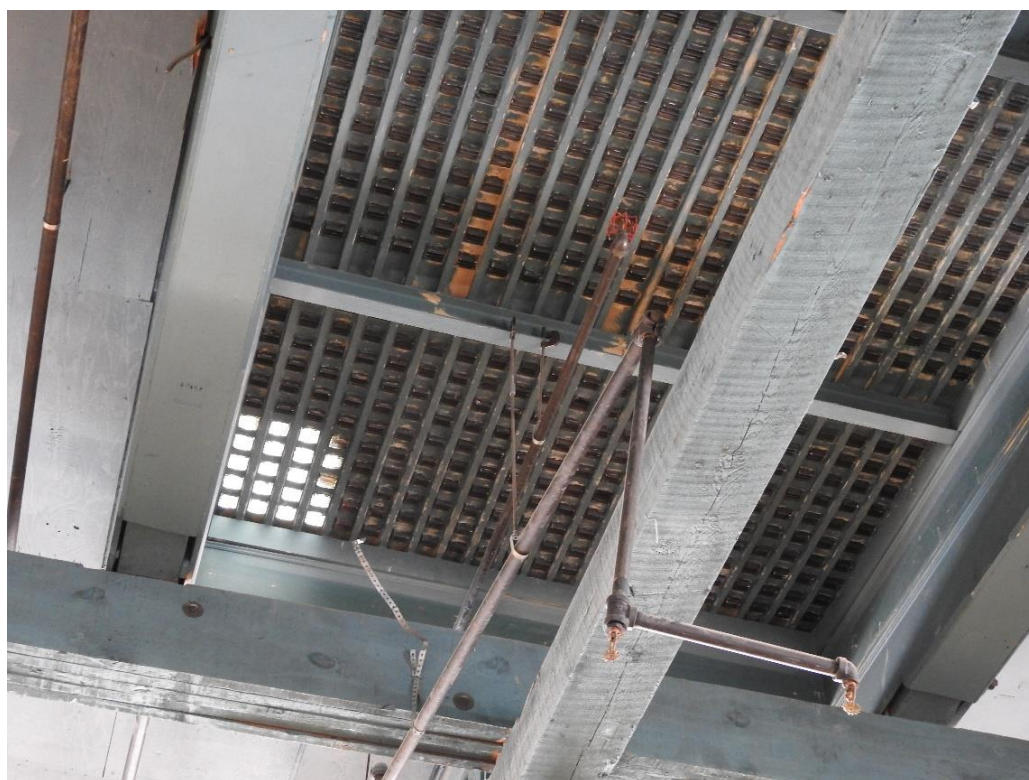


MERC-INT-127

MISSOULA MERCANTILE PHOTOGRAPHIC DOCUMENTATION
INTERIOR VIEWS



MERC-INT-128



MERC-INT-129

MISSOULA MERCANTILE PHOTOGRAPHIC DOCUMENTATION
INTERIOR VIEWS

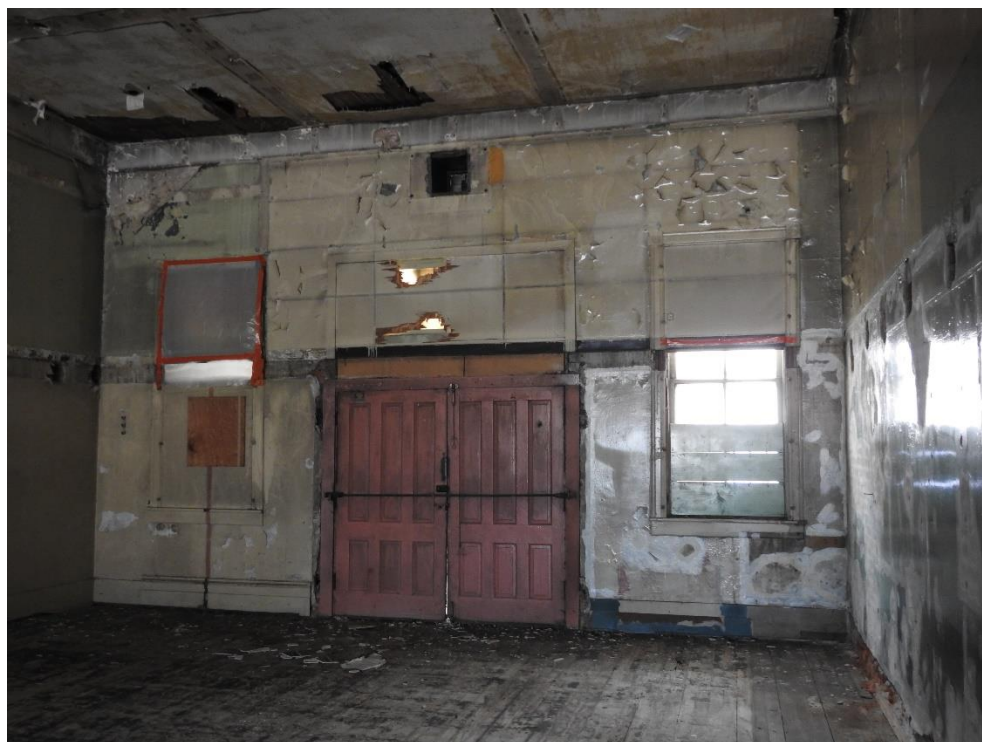


MERC-INT-130

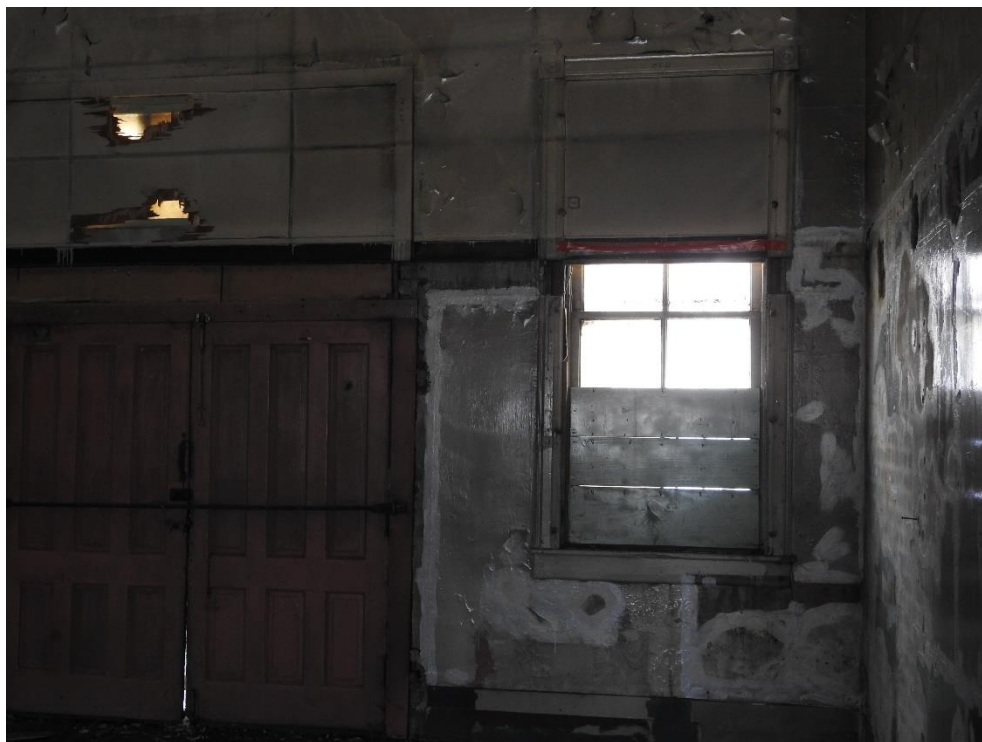


MERC-INT-131

MISSOULA MERCANTILE PHOTOGRAPHIC DOCUMENTATION
INTERIOR VIEWS



MERC-INT-132



MERC-INT-133

MISSOULA MERCANTILE PHOTOGRAPHIC DOCUMENTATION
INTERIOR VIEWS



MERC-INT-134



MERC-INT-135

MISSOULA MERCANTILE PHOTOGRAPHIC DOCUMENTATION
INTERIOR VIEWS



MERC-INT-136



MERC-INT-137

MISSOULA MERCANTILE PHOTOGRAPHIC DOCUMENTATION
INTERIOR VIEWS



MERC-INT-138



MERC-INT-139

MISSOULA MERCANTILE PHOTOGRAPHIC DOCUMENTATION
INTERIOR VIEWS



MERC-INT-140



MERC-INT-141

MISSOULA MERCANTILE PHOTOGRAPHIC DOCUMENTATION
INTERIOR VIEWS



MERC-INT-142

MISSOULA MERCANTILE PHOTOGRAPHIC DOCUMENTATION
INTERIOR VIEWS



MERC-INT-143



MERC-INT-144

MISSOULA MERCANTILE PHOTOGRAPHIC DOCUMENTATION
INTERIOR VIEWS



MERC-INT-145



MERC-INT-146

MISSOULA MERCANTILE PHOTOGRAPHIC DOCUMENTATION
INTERIOR VIEWS



MERC-INT-147



MERC-INT-148

MISSOULA MERCANTILE PHOTOGRAPHIC DOCUMENTATION
INTERIOR VIEWS



MERC-INT-149



MERC-INT-150

MISSOULA MERCANTILE PHOTOGRAPHIC DOCUMENTATION
INTERIOR VIEWS



MERC-INT-151

MISSOULA MERCANTILE PHOTOGRAPHIC DOCUMENTATION
INTERIOR VIEWS



MERC-INT-152

MISSOULA MERCANTILE PHOTOGRAPHIC DOCUMENTATION
INTERIOR VIEWS



MERC-INT-153

MISSOULA MERCANTILE PHOTOGRAPHIC DOCUMENTATION
INTERIOR VIEWS



MERC-INT-154

MISSOULA MERCANTILE PHOTOGRAPHIC DOCUMENTATION
INTERIOR VIEWS



MERC-INT-155

MISSOULA MERCANTILE PHOTOGRAPHIC DOCUMENTATION
INTERIOR VIEWS



MERC-INT-156

MISSOULA MERCANTILE PHOTOGRAPHIC DOCUMENTATION
INTERIOR VIEWS



MERC-INT-157

MISSOULA MERCANTILE PHOTOGRAPHIC DOCUMENTATION
INTERIOR VIEWS



MERC-INT-158



MERC-INT-159

MISSOULA MERCANTILE PHOTOGRAPHIC DOCUMENTATION
INTERIOR VIEWS



MERC-INT-160



MERC-INT-161

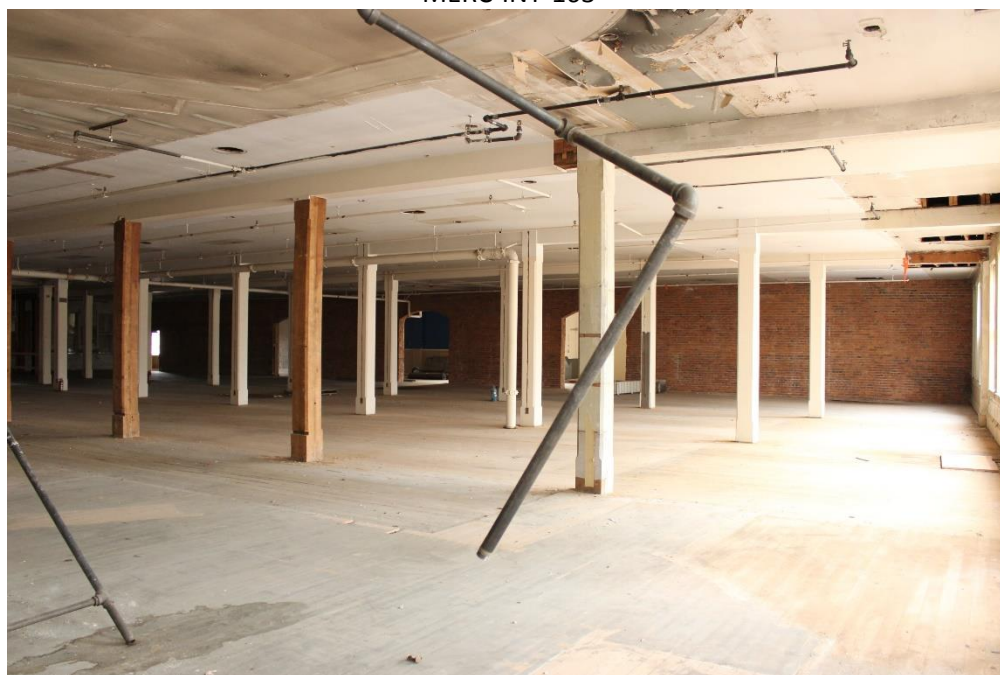
MISSOULA MERCANTILE PHOTOGRAPHIC DOCUMENTATION
INTERIOR VIEWS



MERC-INT-162

?

MERC-INT-163

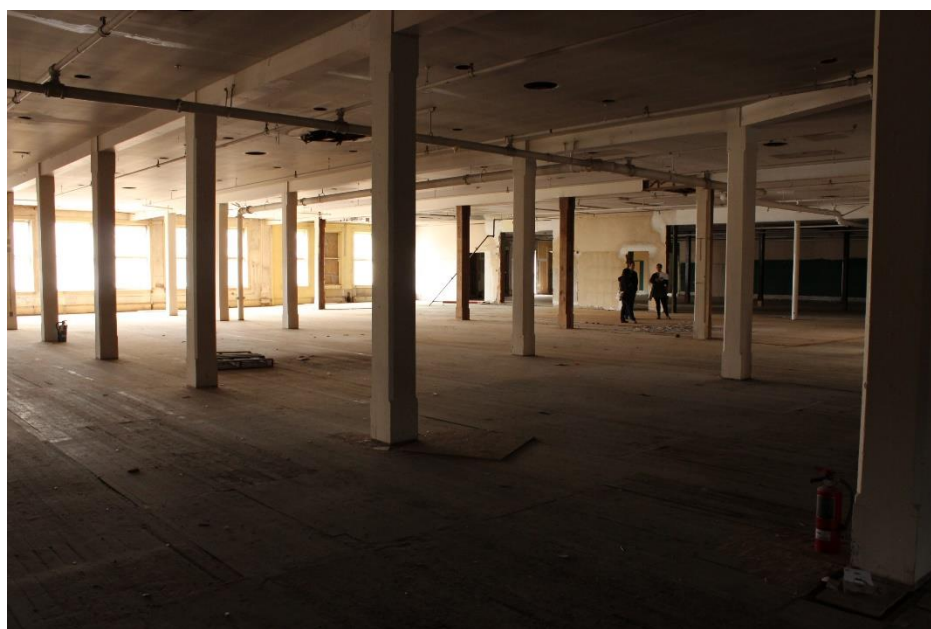


MERC-INT-164

MISSOULA MERCANTILE PHOTOGRAPHIC DOCUMENTATION
INTERIOR VIEWS



MERC-INT-165



MERC-INT-166

MISSOULA MERCANTILE PHOTOGRAPHIC DOCUMENTATION
INTERIOR VIEWS



MERC-INT-167



MERC-INT-168

MISSOULA MERCANTILE PHOTOGRAPHIC DOCUMENTATION
INTERIOR VIEWS



MERC-INT-169



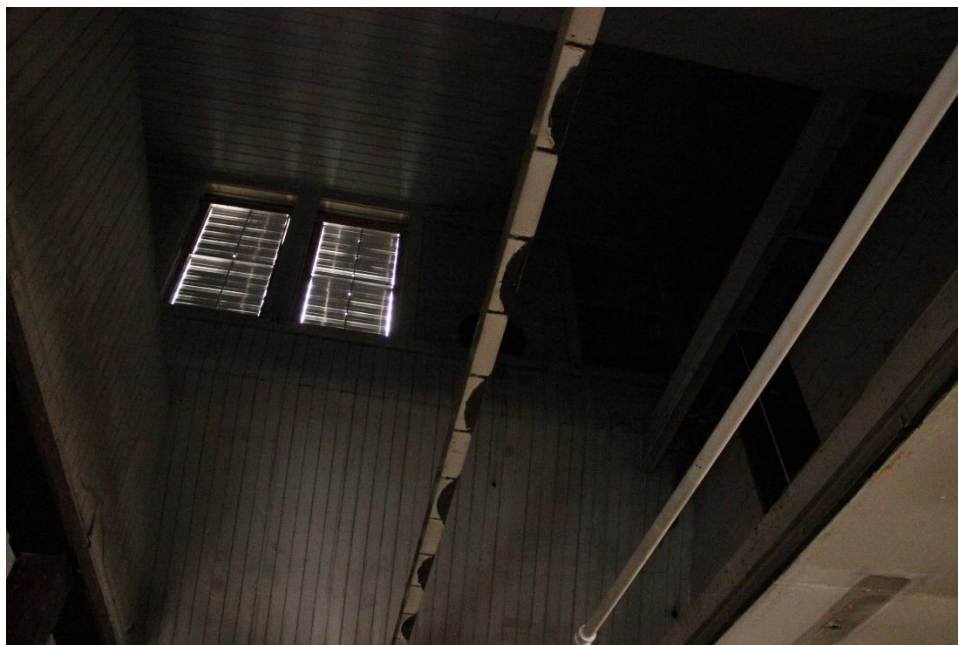
MERC-INT-170

MISSOULA MERCANTILE PHOTOGRAPHIC DOCUMENTATION
INTERIOR VIEWS



MERC-INT-171

MISSOULA MERCANTILE PHOTOGRAPHIC DOCUMENTATION
INTERIOR VIEWS



MERC-INT-172

MISSOULA MERCANTILE PHOTOGRAPHIC DOCUMENTATION
INTERIOR VIEWS

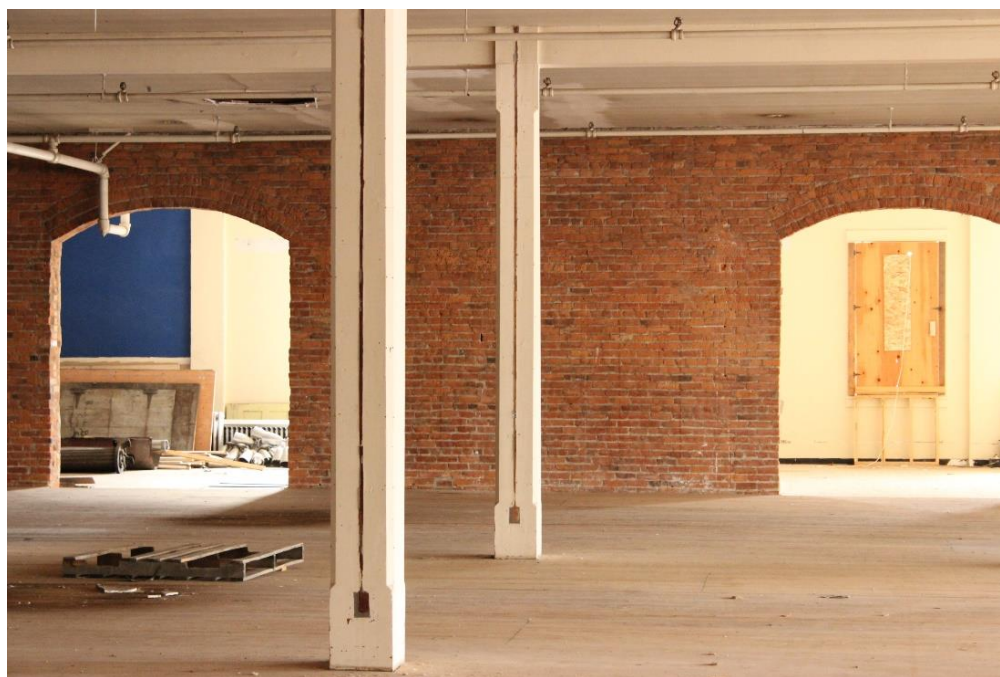


MERC-INT-173

MISSOULA MERCANTILE PHOTOGRAPHIC DOCUMENTATION
INTERIOR VIEWS



MERC-INT-174



MERC-INT-175

MISSOULA MERCANTILE PHOTOGRAPHIC DOCUMENTATION
INTERIOR VIEWS



MERC-INT-176

MISSOULA MERCANTILE PHOTOGRAPHIC DOCUMENTATION
INTERIOR VIEWS



MERC-INT-177

MISSOULA MERCANTILE PHOTOGRAPHIC DOCUMENTATION
INTERIOR VIEWS



MERC-INT-178

MISSOULA MERCANTILE PHOTOGRAPHIC DOCUMENTATION
INTERIOR VIEWS



MERC-INT-179

MISSOULA MERCANTILE PHOTOGRAPHIC DOCUMENTATION
INTERIOR VIEWS



MERC-INT-180



MERC-INT-181

MISSOULA MERCANTILE PHOTOGRAPHIC DOCUMENTATION
INTERIOR VIEWS



MERC-INT-182

MISSOULA MERCANTILE PHOTOGRAPHIC DOCUMENTATION
INTERIOR VIEWS

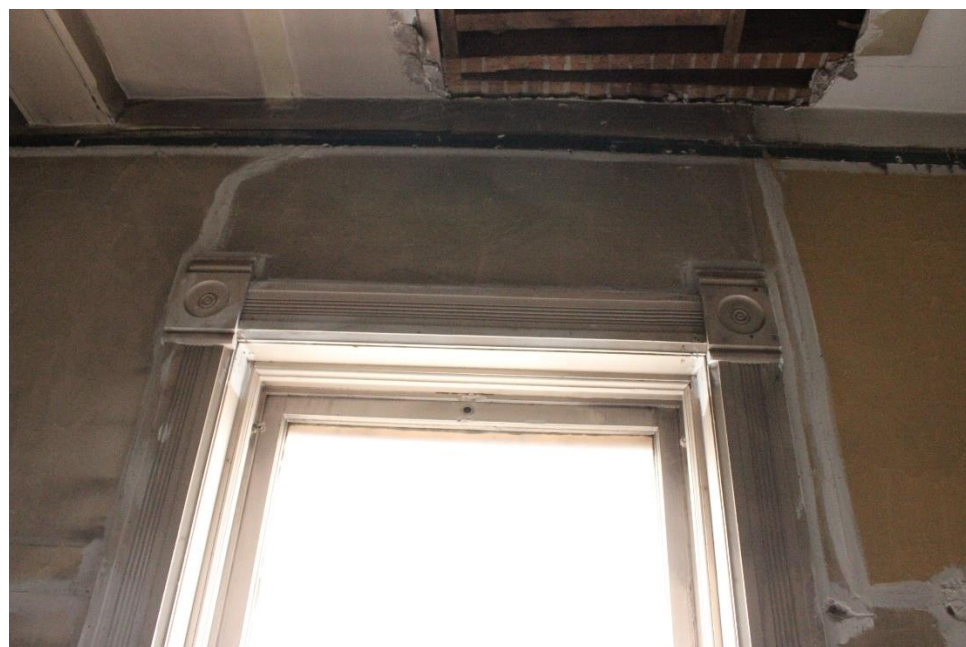


MERC-INT-183

MISSOULA MERCANTILE PHOTOGRAPHIC DOCUMENTATION
INTERIOR VIEWS



MERC-INT-184



MERC-INT-185

MISSOULA MERCANTILE PHOTOGRAPHIC DOCUMENTATION
INTERIOR VIEWS



MERC-INT-186

MISSOULA MERCANTILE PHOTOGRAPHIC DOCUMENTATION
INTERIOR VIEWS



MERC-INT-187

MISSOULA MERCANTILE PHOTOGRAPHIC DOCUMENTATION
INTERIOR VIEWS



MERC-INT-188

MISSOULA MERCANTILE PHOTOGRAPHIC DOCUMENTATION
INTERIOR VIEWS



MERC-INT-189

MISSOULA MERCANTILE PHOTOGRAPHIC DOCUMENTATION
INTERIOR VIEWS



MERC-INT-190



MERC-INT-191

MISSOULA MERCANTILE PHOTOGRAPHIC DOCUMENTATION
INTERIOR VIEWS



MERC-INT-192

MISSOULA MERCANTILE PHOTOGRAPHIC DOCUMENTATION
INTERIOR VIEWS



MERC-INT-193

MISSOULA MERCANTILE PHOTOGRAPHIC DOCUMENTATION
INTERIOR VIEWS



MERC-INT-194

MISSOULA MERCANTILE PHOTOGRAPHIC DOCUMENTATION
INTERIOR VIEWS



MERC-INT-195

MISSOULA MERCANTILE PHOTOGRAPHIC DOCUMENTATION
INTERIOR VIEWS



MERC-INT-196

MISSOULA MERCANTILE PHOTOGRAPHIC DOCUMENTATION
INTERIOR VIEWS



MERC-INT-197

MISSOULA MERCANTILE PHOTOGRAPHIC DOCUMENTATION
INTERIOR VIEWS

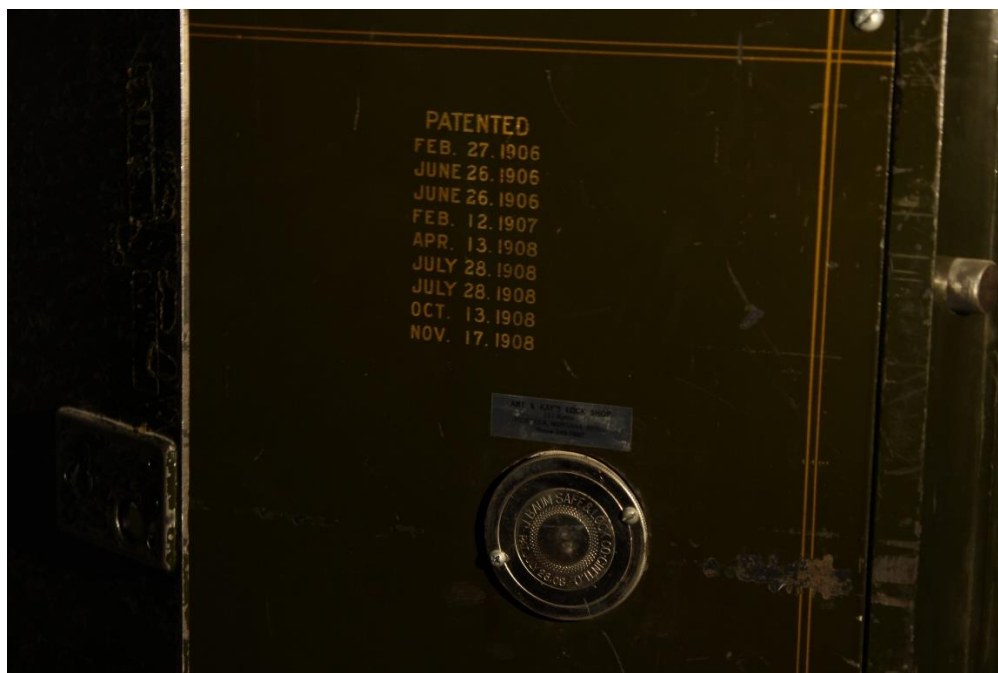


MERC-INT-198

MISSOULA MERCANTILE PHOTOGRAPHIC DOCUMENTATION
INTERIOR VIEWS



MERC-INT-199



MERC-INT-200

MISSOULA MERCANTILE PHOTOGRAPHIC DOCUMENTATION
INTERIOR VIEWS

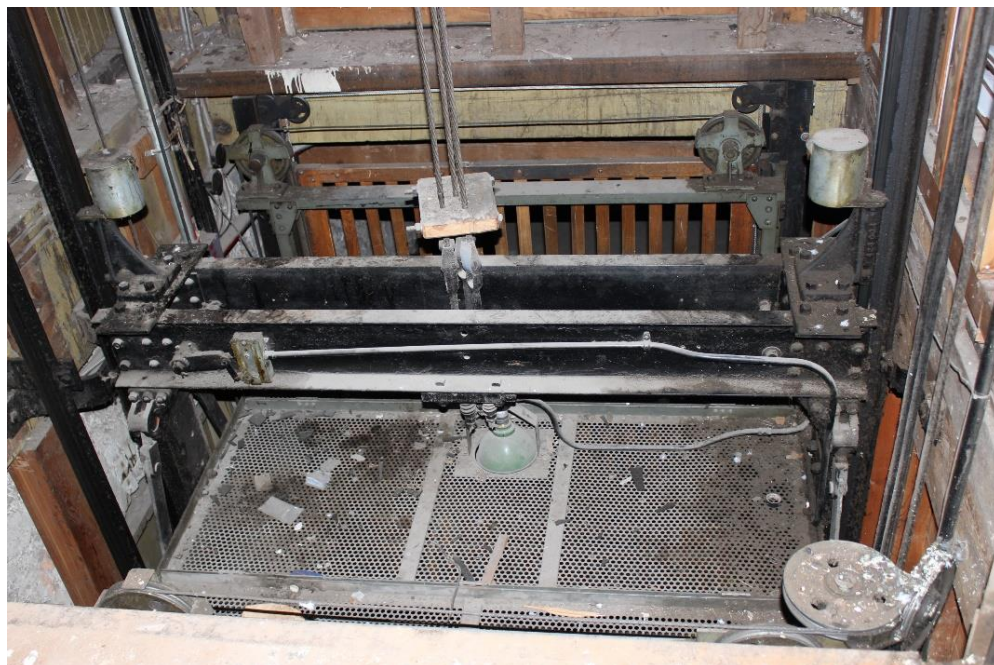


MERC-INT-201

MISSOULA MERCANTILE PHOTOGRAPHIC DOCUMENTATION
INTERIOR VIEWS



MERC-INT-202



MERC-INT-203

MISSOULA MERCANTILE PHOTOGRAPHIC DOCUMENTATION
INTERIOR VIEWS



MERC-INT-204

MISSOULA MERCANTILE PHOTOGRAPHIC DOCUMENTATION
INTERIOR VIEWS



MERC-INT-205

MISSOULA MERCANTILE PHOTOGRAPHIC DOCUMENTATION
INTERIOR VIEWS



MERC-INT-206



MERC-INT-207

MISSOULA MERCANTILE PHOTOGRAPHIC DOCUMENTATION
INTERIOR VIEWS



MERC-INT-208



MERC-INT-209

MISSOULA MERCANTILE PHOTOGRAPHIC DOCUMENTATION
INTERIOR VIEWS



MERC-INT-210

MISSOULA MERCANTILE PHOTOGRAPHIC DOCUMENTATION
INTERIOR VIEWS



MERC-INT-211



MERC-INT-212

MISSOULA MERCANTILE PHOTOGRAPHIC DOCUMENTATION
INTERIOR VIEWS



MERC-INT-213



MERC-INT-214

MISSOULA MERCANTILE PHOTOGRAPHIC DOCUMENTATION
INTERIOR VIEWS



MERC-INT-215



MERC-INT-216

MISSOULA MERCANTILE PHOTOGRAPHIC DOCUMENTATION
INTERIOR VIEWS



MERC-INT-217

MISSOULA MERCANTILE PHOTOGRAPHIC DOCUMENTATION
INTERIOR VIEWS



MERC-INT-218

MISSOULA MERCANTILE PHOTOGRAPHIC DOCUMENTATION
INTERIOR VIEWS



MERC-INT-219

MISSOULA MERCANTILE PHOTOGRAPHIC DOCUMENTATION
INTERIOR VIEWS



MERC-INT-220



MERC-INT-221

MISSOULA MERCANTILE PHOTOGRAPHIC DOCUMENTATION
INTERIOR VIEWS



MERC-INT-222

SUPPLEMENTAL INFORMATION

MISSOULA MERCANTILE
110 N. Higgins Avenue
Missoula
Missoula County
Montana

CTA'S PART ii APPLICATION FOR CERTIFIED REHABILITATION (2011)
National Park Service Received in 2011
<http://www.ci.missoula.mt.us/DocumentCenter/View/34961>

NATIONAL REGISTER NOMINATIONS

GARDEN CITY DRUG
<https://npgallery.nps.gov/NRHP/AssetDetail?assetID=4835c986-f9f6-4a2d-b28d-8df86c78a93a>

MISSOULA MERCANTILE
<https://npgallery.nps.gov/NRHP/AssetDetail?assetID=6dc7b417-01d6-47f6-bb49-7b54ecea9343>

DOWNTOWN MISSOULA HISTORIC DISTRICT
<https://npgallery.nps.gov/NRHP/AssetDetail?assetID=1ab4f4a4-2a24-4294-9da0-b138e701b200>

MISSOULA MERCANTILE WAREHOUSE
<https://npgallery.nps.gov/NRHP/AssetDetail?assetID=60caffee-8a1e-485b-bfe3-fdb4de6189e4>

RESOURCES AVAILABLE THROUGH THE MANSFIELD LIBRARY, UNIVERSITY OF MONTANA

MISSOULA MECANTILE
http://um-primo.hosted.exlibrisgroup.com/primo_library/libweb/action/dlSearch.do?institution=01TRAILS_UM&vid=01TRAILS_UM&query=any%2Ccontains%2Cmissoula+mercantile

MISSOULA MERCANTILE COMPANY
[http://um-primo.hosted.exlibrisgroup.com/primo_library/libweb/action/search.do?fn=search&vl\(freeText0\)=Missoula+Mercantile+Company&tab=everything&mode=Basic&scp.scps=scope%3a\(01TRAILS_UM\)%2cscope%3a\(TRAILS-PRINT\)%2cscope%3a\(01TRAILS_UM_LIBGUIDES_NEW\)%2cscope%3a\(01TRAILS_UM_CONTENTDM\)%2cscope%3a\(01TRAILS_UM_SCHOLARWORKS\)%2cscope%3a\(D-](http://um-primo.hosted.exlibrisgroup.com/primo_library/libweb/action/search.do?fn=search&vl(freeText0)=Missoula+Mercantile+Company&tab=everything&mode=Basic&scp.scps=scope%3a(01TRAILS_UM)%2cscope%3a(TRAILS-PRINT)%2cscope%3a(01TRAILS_UM_LIBGUIDES_NEW)%2cscope%3a(01TRAILS_UM_CONTENTDM)%2cscope%3a(01TRAILS_UM_SCHOLARWORKS)%2cscope%3a(D-)

[01TRAILS_UM\)%2cscope%3a\(01TRAILS_UM_CR\)%2cprimo_central_multiple_fe&vid=01TRAILS_UM&ct=suggestedSearch&vl\(105088159UI1\)=all_items&vl\(38707347UI0\)=creator](#)

RESOURCES AVAILABLE AT MISSOULA PUBLIC LIBRARY

Gordon, Greg

When Money Grew on Trees: A.B. Hammond and the Age of the Timber Baron

University of Oklahoma Press

2015

****Contains an extensive bibliography detailing the archival collections, manuscripts, newspapers, journals, oral histories, published resources, unpublished manuscripts and theses, and websites related to Missoula Mercantile Company, AB Hammond, Northern Pacific Railroad and Montana Improvement Company.*

http://mtsc.sdp.sirsi.net/client/en_US/MSLA-MAIN/search/results?qu=when+money+grew+on+trees&te=&lm=PARTNERS1&dt=list

Montana Collection

<http://www.missoulapubliclibrary.org/montana-collection>

Missoula Mercantile Search Results

http://mtsc.sdp.sirsi.net/client/en_US/MSLA-MAIN/search/results?qu=missoula+mercantile&qf=FORMAT%09Format%09BOOK%09Books&lm=PARTNERS1

ARCADIA PUBLISHING COMPANY

Cohen, Stan and Phillip Maechling

Missoula, Then and Now

Arcadia Publishing

2010

<https://www.arcadiapublishing.com/Products/9780738580784>

Cohen, Stan

Missoula: Postcard History Series

Arcadia Publishing

<https://www.arcadiapublishing.com/Products/9780738558882>

Cohen, Stan

Missoula: Images of America

Arcadia Publishing

<https://www.arcadiapublishing.com/Products/9780738596440>

Manning, Nikki
Historic Underground Missoula
Arcadia Publishing
2015

****Contains a bibliography*

<https://www.arcadiapublishing.com/Search?searchtext=missoula+mercantile&searchmode=anyword&searchoption=allbooks>

Smith, Minie
The Missoula Mercantile
Arcadia Publishing
2012

****Contains a Reference Section that includes sources from University of Montana Archives and Special Collections, early histories, Missoula historic resources, oral histories, community histories, newspapers and references.*

<https://www.arcadiapublishing.com/Search?searchtext=missoula+mercantile&searchmode=anyword&searchoption=allbooks>

MONTANA HISTORICAL SOCIETY PRESS

Mathews, Allan
Montana Mainstreets: A Guide to Historic Missoula
Montana Historical Society Press
2002

****Contains a "Suggested Reading" section starting on page 167 that contains valuable references.*

http://mtsc.sdp.sirsi.net/client/en_US/MSLA-MAIN/search/results/?lm=PARTNERS1&ln=en_US&qu=a+guide+to+historic+missoula&rt=&submit=Search

DOCUMENTATION STANDARDS

<http://www.dahp.wa.gov/sites/default/files/MitigationDocumentationStandards.pdf>