



Weekly Progress Report for:

# Missoula Mercantile Deconstruction

# 17-7510

Week Of:

March 24, 2017



## Missoula Mercantile Project

Weekly Report-3-20-17

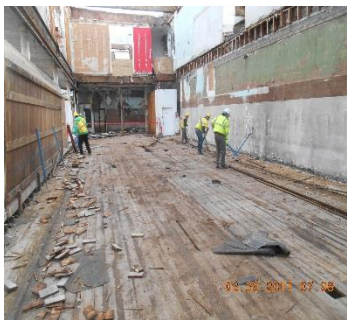
Deconstruction Phase

**On-Site Activity:**

MONDAY-3-20-17

1. Crew starting out this morning in bay #1, will be removing the subfloor and joist. This is the oldest part of the building.
2. Subfloor and joists have been removed in bay #1. The crawlspace is seen here with the trenches. These trenches have been dug in under this part of the building. I don't know when or why.
3. It was rumored that there were some sort of rail system in these trenches we didn't know what that meant. Here they have been exposed within the crawlspace at the bottom of the trenches.
4. A closer look revealed that they were half inch steel pipe put together and strapped to wood blocks. Why?
5. The crew finished removing the floor Joists in bay #2.
6. Next the crew is removing the finished floor down to the subfloor in the same bay #2
7. Material salvaged out today waiting to be loaded.
8. This load of material consisting mainly of the floor joist and some of the sub floor sheeting is on its way to Home Resource today.

#1.



#2.



#3.



#4.



#5.



#6.



#7.



#8



## Missoula Mercantile Project

Weekly Report-3-20-17

Deconstruction Phase

**On-Site Activity:**

TUESDAY: 3-21-17

1. As of Monday the crew has really been progressing rapidly through these different bays. This is bay #2 the subfloor has all been removed. The next phase will be to remove the floor joists. This is above the crawlspace area also.
2. Same area as you can see this is completed. The crawlspace is exposed along with the trenches they just seem to be continuing throughout this side of the building space.
3. As you can see they just simply went right through the foundation walls and just kept right on going. This did not help the stability of this section of the building.
4. Crew working on bay #3, removal of the finish flooring working their way down to the subfloor, and joists.
5. We did find a few treasured items, this is part of an old poster for men's fashions.
6. These items show a hand-painted sign and a store equipment catalog from a competitor.
7. Crew removing the joists using the scissor lift this is in area #4.
8. From the second floor as you can see this is all been completely deconstructed. The crew will be taking the flooring out that you're looking at. This is the last floor area over the crawlspace area on this side of the building.

#1.



#2.



#3.



#4.



#5.



#6.



#7.



#8.



## Missoula Mercantile Project

Weekly Report-3-20-17

Deconstruction Phase

**On-Site Activity:**

Wednesday: 3-22-17

The day to day activity of deconstructing this building in order to salvage the lumber, is quickly coming to a close for Home Resource.

1. The first floor staging area every morning looks like this. Material was brought over here stacked and the crew will sort this out according to size and length.
2. This material is separated according to size and length. The material whether it's joist material or decking material all will be banded and then moved to the staging area outside.
3. Outside in the parking lot these bundles are separated into stacks that will be loaded onto the trailers and then hauled off site.
4. This load is primarily the floor joists of varying sizes and links.
5. This trailer is loaded with floor joists of various sizes and links and also the subfloor material on top. You'll see some 2x by material that were actually made into beams to support the floor joist.
6. All the floors start out with the finish floor being removed and then taking down to the subfloor.
7. Ones the subfloor is removed, the joists or exposed. Those are then cut out and removed. They go over to the staging area.
8. With this work taking place on the ground level just above the crawlspace, what you see is crawlspace in Bay #4. Everything to the right of this picture is on crawlspace, everything to the left of this picture is above full basement.



## Missoula Mercantile Project

Weekly Report-3-20-17

Deconstruction Phase

**On-Site Activity:**

Thursday: 3-23-17

1. Section of flooring in bay #1. Coming out around the corner all of the subfloor and joists will be pulled.
2. Same section of flooring. Finish floor being pulled and the subfloor will be next along with the floor joists.
3. Crew working on the north face of the building removing all of the metal clad window shutters. These will be taking to Home ReSource and stored.
4. Crew working on removing the window shutters.

Some of the post in beams that were in the crawlspace area that were supporting the floor joists.

5. Yes you are correct this is a post or better yet a pine tree being used as a support member in this particular section of the rubble footing.

During the excavation we may find out if this is an actual tree.

6. Some of the post in beams that were in the crawlspace area that were supporting the floor joists.
7. A lot less confusion in the first floor staging area most of the larger floor joists and a lot of the floor sheeting has already been removed from site.
8. Another large load of the floor joists and floor sheeting being removed from site today.

#1.



#2.



#3.



#4.



#5.



#6.



#7.



#8.



## Missoula Mercantile Project

Weekly Report-3-20-17

Destruction Phase

**On-Site Activity:**

Friday 3-24-17

1. This north section of the building will soon be void of all these metal clad window shutters.
2. The metal clad shutters that have been removed so far. Inside the building waiting to be move to HR.
3. The small American flag was found in the crawlspace it's pretty tattered and torn and it has 48 stars on it. This flag flew from 1912 tile 1959.
4. This is an old flour sack also found in the crawlspace area. Looks like flour from Mini Annapolis Minnesota.
5. This joists material was already stacked in the basement area. The crew will be removing it to the staging area, and salvaging it also.
6. Remember the rail systems that we found in the trenches in the crawlspace area. This is a small section of that rail. Showing the steel pipes being attached to wood ties.
7. Last of the floor section coming out, it will be completed today.

8. Section of the steel that was used in the building has this marking on it. L ACK KWANNA.

The **Lackawanna Steel Company** was an [American steel](#) manufacturing company that existed as an independent company from 1840 to 1922, and as a [subsidiary](#) of the [Bethlehem Steel](#) company from 1922 to 1983.

#1.



#2.



#3.



#4.



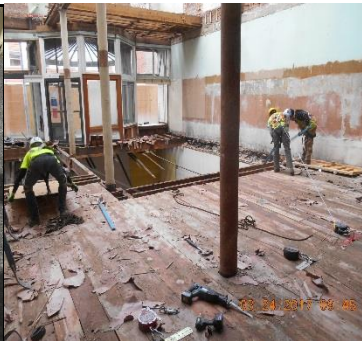
#5.



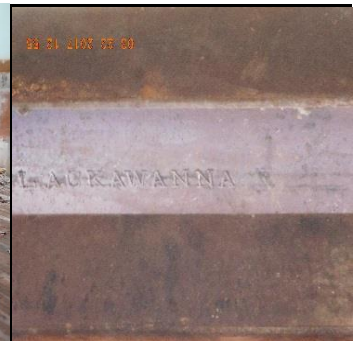
#6.



#7.



#8.





## Missoula Mercantile Project

### DAILY SALVAGED MATERIAL

#### Friday-2-17-17

##### **Materials: Wood Removed**

60- 2" x 8' x 20' rough cut	60-2" x 8" x 12' rough cut	12- 4" x 6" x 20' rough cut
3- 4" x 6" x 16' rough cut	2- 4" x 6" x 7' rough cut	

#### Monday-2-20-17

##### **Materials: Wood Removed**

74-1" x 6" x 14' rough cut	14-2' x 12" x 19' true cut	86- 1' x 6" x 8' rough cut
43-2" x 8" x 12' true cut	30- 2" x 8" x 19' true cut	14-2' x 12" x 19' true cut
14-2" x 12" x 8' true cut		

#### Tuesday-2-21-17

##### **Materials: Wood Removed**

130-2" x 8" x 14' true dimension		
40-2" x 8" x 17' true dimension	40-2" x 8" x 17' true dimension	50-2" x 8" x 12' true dimension

#### Wednesday- 2-22-17

##### **Materials: Wood Removed**

186-1" x 6" x 20' rough cut	64- 1" x 8" x 14' rough cut	24- 4" x 4" x 8' rough cut
-----------------------------	-----------------------------	----------------------------

#### Thursday-2-23-17

##### **Materials: Wood Removed**

119- 2" X 6" X 20'	2- 2" X 8" X 15'	2-2" X 8" X 20'
14- 2" X 12" X 26'	2-2" X 8" X 13'	4-2" X 8" X 20'
4-2" X 12" X 16'	2-2" X 8" X 14'	

#### FRIDAY-2-24-17

##### **Materials: Wood Removed**

176-1" X 6" X 10'	76-1" X 6" X 14'	64-1" X 6" X 16'
42- 1" X 6" X 10'	76- 1" X 6" X 15'	28- 1" X 6" X 12'





## Missoula Mercantile Project

### DAILY SALVAGED MATERIAL

#### Monday—2-27-17

##### **Materials: Wood Removed**

2-2"x 6"x 4'	2-2"x 6'x 2'	2-2"x 6'x 7'	3-2"x 6" x 8'	6-2"x 6"x 10'
2-4"x 6"x 8'	2-4"x 6"x 8'	2-4"x 6"x 8'	11-2"x 8"x 9'	13-2"x 8"x 6'
9-2" x 8"x7'	7-2"x 8'x 8'	6-2"x 8'x 12'	2"x 8"x 12'	8-2"x 8"x 15'
6-2"x 8"x 17'	1-2"x 8"x 18'	1-2"x 8"x 18'	1-2"x 8"x 23'	6-1"x 12"x 13'
4-2"x 10"x 10'	6-1"x 10"x 12'	5-1"x 10"x 12'	8-2'x 4"x 12'	16-2"x 4"x 8'
5-1"x 12'x 14'	6-2"x 4"x 6'	6-2"x 4"x 12'	140-1"x 6"x 12'	

#### Tuesday—2-28-17

##### **Materials: Wood Removed**

140-1"x 6'x 9'	98-1"x 6"x 5'	112-1"x 6" x 5'	96-1"x 6"x 6'	50-1"x 6"x 5'
38-1"x 6"x 7'	4-1"x 6" 6'	4-1"x 6"x 4'	5-1" x 6"x 8'	2-1"x 6" x9'
1-1"x 6"x10'	5-1"x 6"x 13'	1-1"x 6'x 14'	2-1"x 6'x 15'	6-1"x 8'x6'
14-1'x 8'x10'	40-2'x 8'x 1			

#### Wednesday 3-01-17

##### **Materials: Wood Removed**

160-1" x 6' x 14'	30-2" x 4" x 8'
-------------------	-----------------

#### Thursday-3-02-17

##### **Materials: Wood Removed**

40-2"x 6"x 24'	10-2"x 6"x 14'	10-2"x 6"x 8'	50-2"x 6"x 14'	22-2"x 6"x 16'
36-2'x 4"x 8'	42-2"x 4'x 5'	10-2" x 4'x 6'	30-2"x 4"x 8'	44-2" x 6"x 10'
120-2"x 6"x 10'	74-2"x 6"x 18'			

#### FRIDAY-3-03-17

##### **Materials: Wood Removed**

77-1"x 6"x 8'	20-1"x 6"x 4'	38-2"x 6"x 6'	27-2"x 4"x 8'	18-2"x 12"x 25'
18-2"x 12"x 20'	24-2'x 12'x 20'	16-2' x 12"x 14'	52-2'x 4"x 10'	40-1"x 6"x 6'
3-4"x 6"x 14'	12-2"x 12"x 15'			





## Missoula Mercantile Project

### DAILY SALVAGED MATERIAL

**Monday—3-06-17**

**Materials: Wood Removed**

66-2' x 8" x 12'	55-2" x 6" x 7'	18-2" x 6" x 4'	20- 2" x 12" x 14'	20-2' x 12" x 10'
30-2" x 12' x 25'	20-2" x 12" x 20'	30-2' x 12' x 20'	106-1' x 6' x 6'	

**Tuesday—3-07-17**

**Materials: Wood Removed**

24- 2' x 12' x 24'	54-2' x 12' x 20'	18-2" x 12' x 27'	46-4" x 4" x 5'	47-1" x 6" x 7"
--------------------	-------------------	-------------------	-----------------	-----------------

**FRIDAY-3-10-17**

**Materials: Wood Removed**

24-2" x 4" x 12'	140-1" x 6"tg. X 16'	8-4" x 6" x 16'	60-1" x 10" x 12'
------------------	----------------------	-----------------	-------------------

**Tuesday—3-14-17**

**Materials: Wood Removed**

144-1"x 6"x 10'	52-1"x 6" x 18'	134-1" x 6' x 10'	240-1" x 6" x 10' T&G
108-1" x 6" 9' T&G			

**FRIDAY-3-17-17**

**Materials: Wood Removed**

24-2' x 16" x 22'	42-2 x 12 x 17'	160-1' x 6" x 10' T&G	120-1" x 6" x 10' RC
-------------------	-----------------	-----------------------	----------------------

**Monday 3-20-17**

**Materials: Wood Removed**

18-2' X 16" X 25'	6-3" X 16" X 23'	46-2" X 12" X 12'	108-1' X 6' X 12'	39-2' X 12" X 19
-------------------	------------------	-------------------	-------------------	------------------

**Wednesday 3-22-17**

**Materials: Wood Removed**

55-2" x 14' x 19'	5-2" x 10" x 16'	3-4" x 6" x 12'	23-3' x 12" x 26'	120-1" x 8" x 12'
90-1" x 6" x 12'	110-1" x 8" x 6'			





## Missoula Mercantile Project

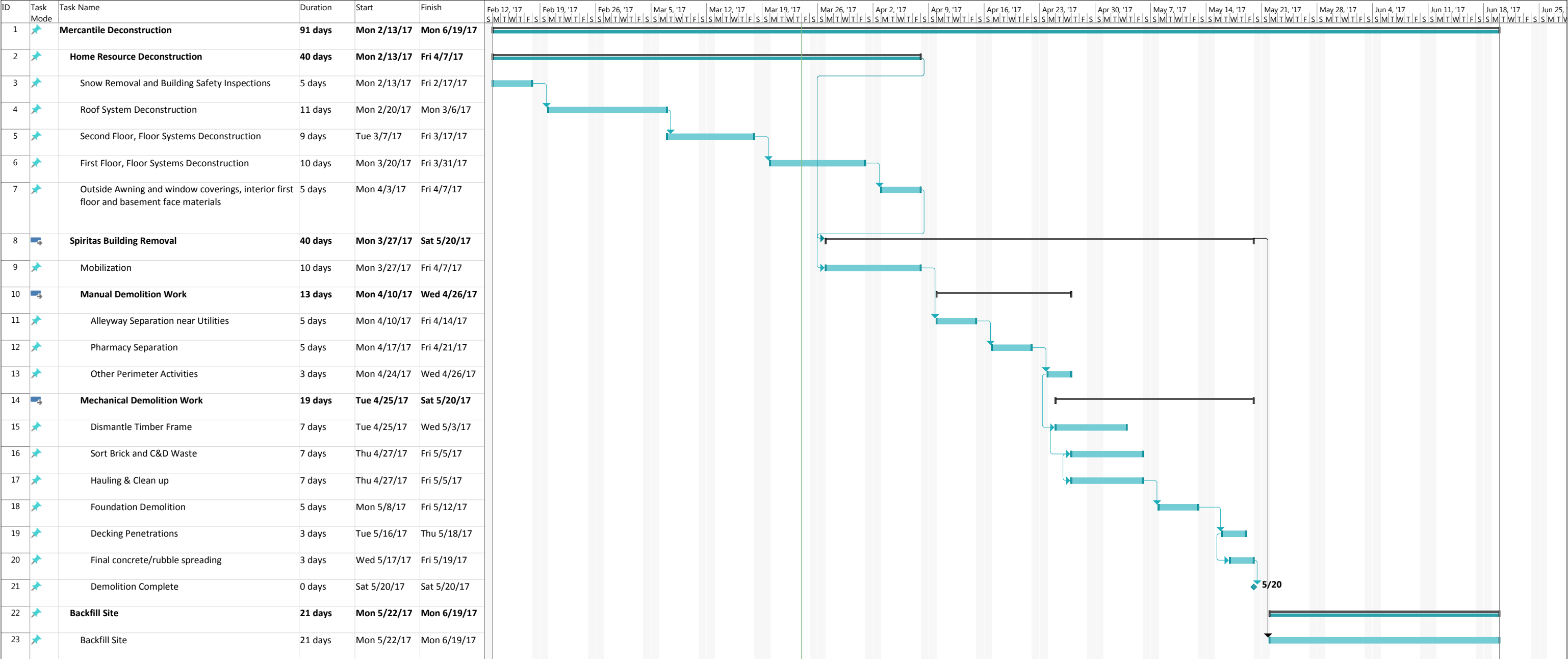
### DAILY SALVAGED MATERIAL

Thursday-3-23-17

**Materials: Wood Removed**

57-2" x 14" x 9'    20-2" x 14" x 23'    130-1" x 8" x 14'    33-2" x 14" x 10'    150-1" x 6" x 14'  
4-4" x 4" x 8'    17-3" x 16" x 22'    1-3" x 16" x 27'





Project: Mercantile  
Date: Fri 3/24/17

Task

Split

Milestone

Summary

Project Summary

Inactive Task

Inactive Milestone

Inactive Summary

Manual Task

Duration-only

Manual Summary Rollup

Manual Summary

Start-only

Finish-only

External Tasks

External Milestone

Deadline

Progress

Manual Progress

Mercantile Deconstruction - Missoula, MT