



Missoula Parking Commission- FY24 Budget

Ian Ortlieb, Parking Services Director

August 2, 2023

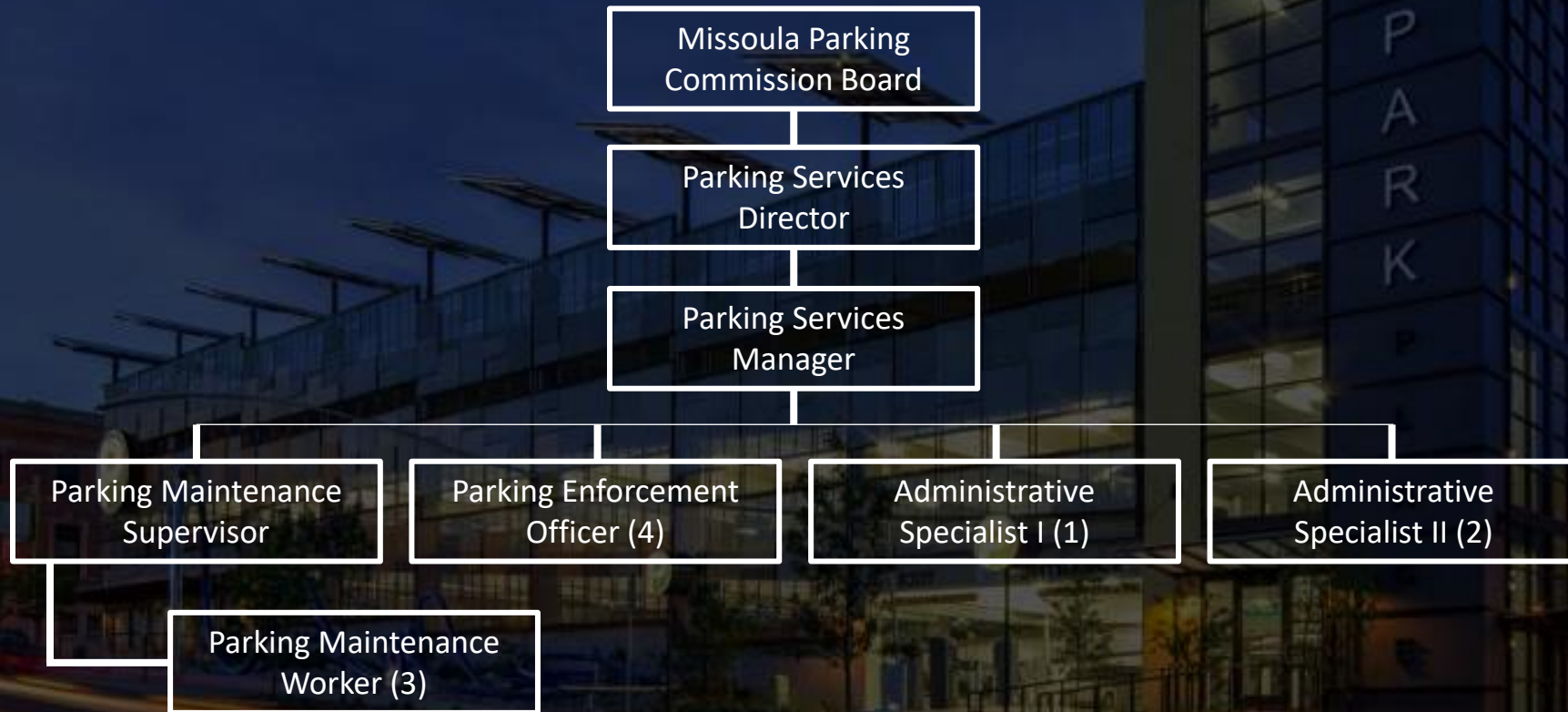


MISSION

The Missoula Parking Commission (MPC) plays an important role in making Missoula's downtown a great experience. Our mission is to work with government, businesses, and citizens to provide and manage parking and parking alternatives. MPC identifies and responds to the ever-changing parking needs in the area for which it is responsible.



ORGANIZATIONAL STRUCTURE





AREAS OF FOCUS

Goal 1: Pursue the expansion of the Missoula Parking Commission's jurisdiction

Goal 2: Identifying scope, justification, and potential locations for the construction of the next parking garage

Goal 3: Accurate and responsible management of financial resources. Reflect Parking Commission investments with appropriate standards for revenue



MPC CITYWIDE PARKING PLAN

- ❖ Comprehensive analysis and recommendations
 - ❖ Expansion of jurisdiction
 - ❖ Optimization of the current parking system
 - ❖ Management and operational strategies
 - ❖ Efficiency in management
 - ❖ Operations development
 - ❖ Future growth
 - ❖ Revenue generation and cost recovery
- ❖ Schedule:
 - ❖ Start- February 2023
 - ❖ Focus group meetings- March 2023
 - ❖ Strategies menu- Summer 2023
 - ❖ In-person community charrettes- Summer 2023
 - ❖ Final report/plan- October 2023

Preparing our Parking System for a Big, Bright Future

The City of Missoula manages a parking and multimodal system to support community needs—from commuting to conducting business, shopping and dining, attending events, or enjoying recreation opportunities. As our city evolves and we prepare for the future, we're looking inward at how our parking programs and options can better support the people that live, work and play all around Missoula.

WHY NOW?

- Demand for our street curbs and our parking facilities is expanding and changing.** Missoula started managing parking more than 50 years ago. Since then, our city has grown and many different competing needs for on-street and off-street parking and curb space have emerged. Many of these needs weren't considered in original plans for parking and curb management—especially in developing areas of our city.
- Advancements in how, when, and where we manage parking will improve experience for all users.** As our community has changed, so has the parking industry! New practices, ideas, and technologies can help create a better parking and mobility experience for everyone in Missoula if implemented correctly.
- More advanced parking management can support our big plans for the future.** Being strategic about parking management practices can help us achieve our most important community goals, like mitigating the effects of our rapid housing development, supporting our vibrant economy, protecting our environment and air quality, reducing traffic congestion, and making sure Missoula can pay for parking and transportation needs well into the future.

SHARE YOUR VOICE!

This project aims to improve parking and access options for the entire Missoula community, today and in the future. Because of that, every person living, working, recreating, or using services in Missoula is a key partner in this effort.

Share your feedback and influence our work with your voice in the ways that work best for you.

PROJECT LIFECYCLE

Collaboration with the community is an integral part of our work. Opportunities to work together with the community are planned throughout the duration of the project.

WINTER - SPRING 2023	SPRING - SUMMER 2023	SUMMER - FALL 2023
Discovery & Visioning	Identify & Evaluate Strategies	Create a Plan for Action

www.engagemissoula.com/parkingplan



PARKING PLAN: VISION & GUIDING PRINCIPLES

Vision:

Enact a proactive, flexible parking management program that responds to our growing and evolving community, advances our most important goals, remains financially sustainable, and respects Missoula's unique and varied sense of place.

Guiding Principles:

- ❖ Responsive to changes in parking and access demand patterns
- ❖ Offers opportunities for consistency and collaboration amount internal and external partners
- ❖ Prioritizes a multimodal environment to maximize freedom, choice, and safety
- ❖ Leverages revenue generation to maximize cost recovery and reinvestment that benefits the community
- ❖ Equitably accommodates all users in need of a parking option- long-term, mid-term, and short-term parking
- ❖ Enables contextual approaches to Missoula's different neighborhoods and communities
- ❖ In alignment with Missoula's Growth Policy, encourages efficient land use practices to maximize available land's utility.



ACCREDITED PARKING ORGANIZATION

International Parking and Mobility Institute (IPMI)

- ❖ Largest association of professionals in parking, transportation, and mobility
- ❖ Works to advance parking and mobility through:
 - ❖ Professional development
 - ❖ Research and data collection
 - ❖ Advocacy and outreach

Accredited Parking Organization – Set industry standards

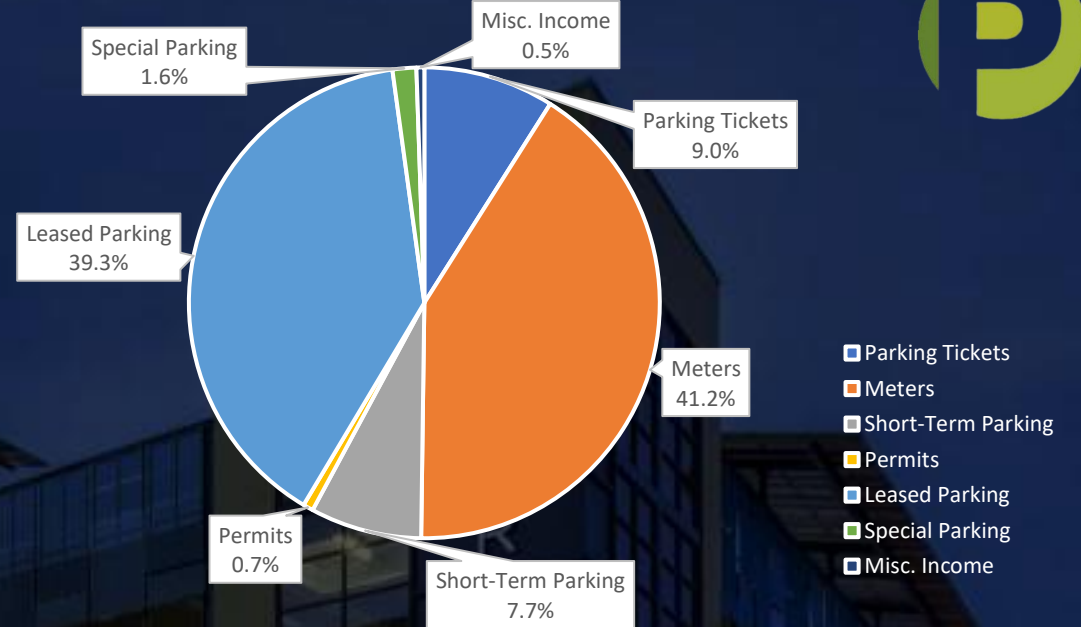
- ❖ Parking Management and Operations
- ❖ Customer service
- ❖ Professional development
- ❖ Sustainability



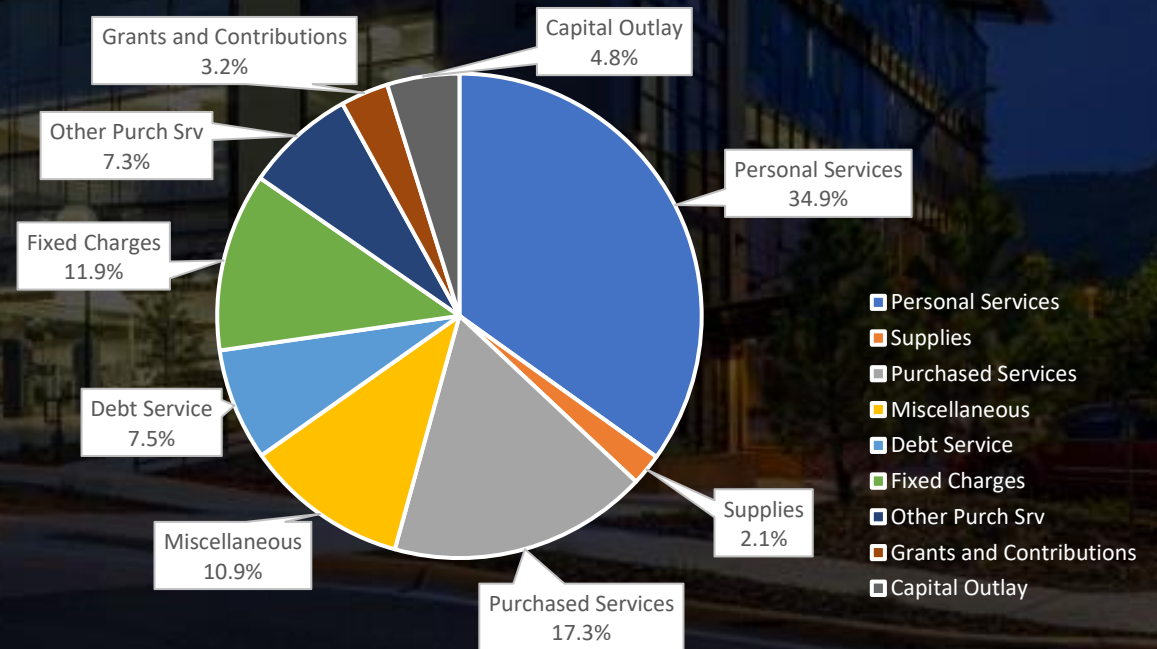
FY 2024 PROPOSED BUDGET

	FY 2024 Budgeted Amount
Parking Revenues	\$2,918,167
Parking Operating Expenses	\$1,958,439
Other Expenses	\$874,411

Fiscal Year 2024 Revenue



Fiscal Year 2024 Expenses





FY 2024 REQUESTS

- ❖ **Baseline Increases: \$67,282**
 - ❖ Increases to utilities, contractual increases, and accounting corrections to reflect actual expenses
 - ❖ Professional development- travel and education increase
 - ❖ New R&M Account- Sign repair/replacement- leased lot sign refresh
 - ❖ Parking availability technology
- ❖ **Personnel Increases: MFPE/MPC Collective Bargaining Agreement - \$59,930**
 - ❖ Increased hourly wage- Parking Enforcement and Maintenance positions
 - ❖ Increased clothing allowance



FY 2024 CIPs

❖ License Plate Recognition Camera Upgrade

❖ Project Rating: **REQUIRED**

❖ Cost \$120,870

This project is to replace end of support original camera equipment on three MPC enforcement scooters.

❖ Bank St. Repairs

❖ Project Rating: **REQUIRED**

❖ Cost TBD

Work includes repair of damaged pre-cast deck, deck surfacing and waterproofing, electrical room repairs, and stair repair and water remediation

All new requests and capital improvement projects are funded by Parking Commission Revenues



QUESTIONS?

Missoula Parking Commission FY24 Budget Presentation